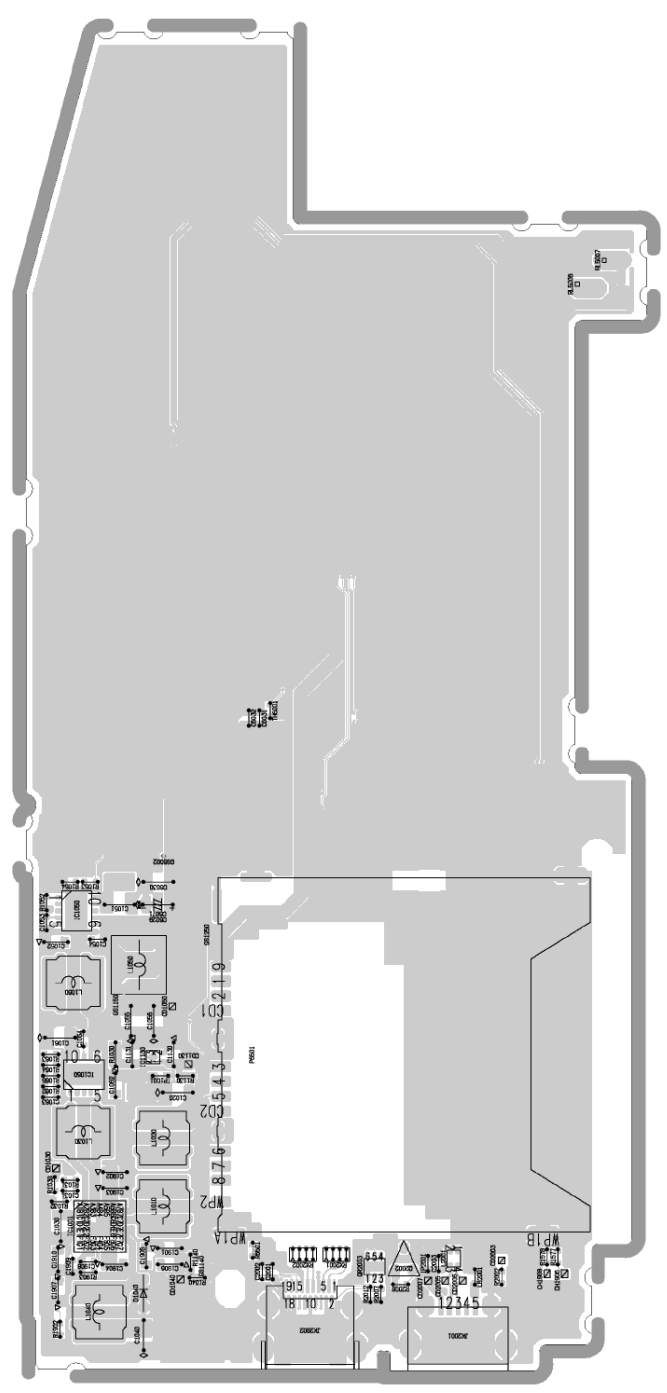


---

**Model No. : DMC-TZ90/TZ91/TZ92/TZ93/ZS70 Main P.C.B. (Component Side)**

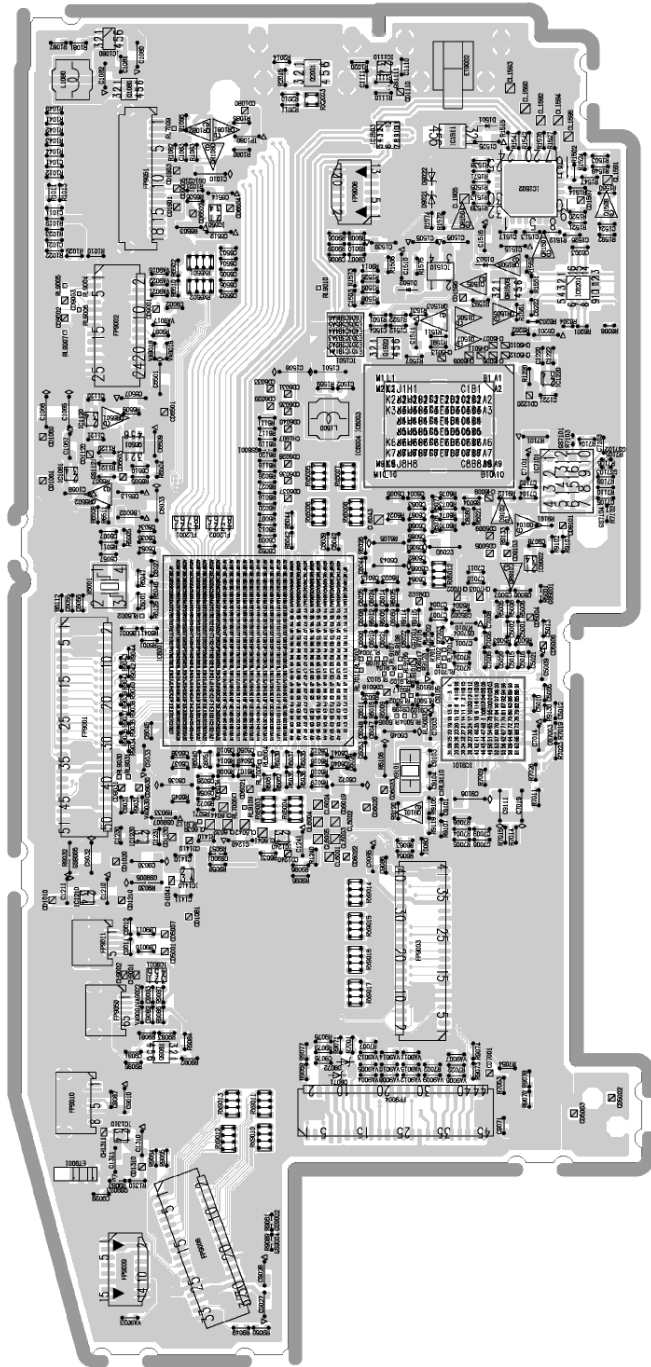
---



---

**Model No. : DMC-TZ90/TZ91/TZ92/TZ93/ZS70 Main P.C.B. (Foil Side)**

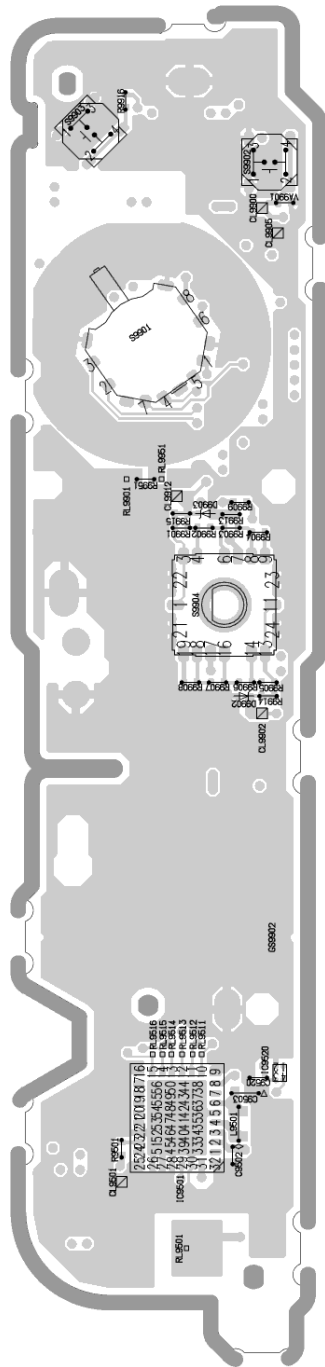
---



---

**Model No. : DMC-TZ90/TZ91/TZ92/TZ93/ZS70 Top P.C.B. (Component Side)**

---

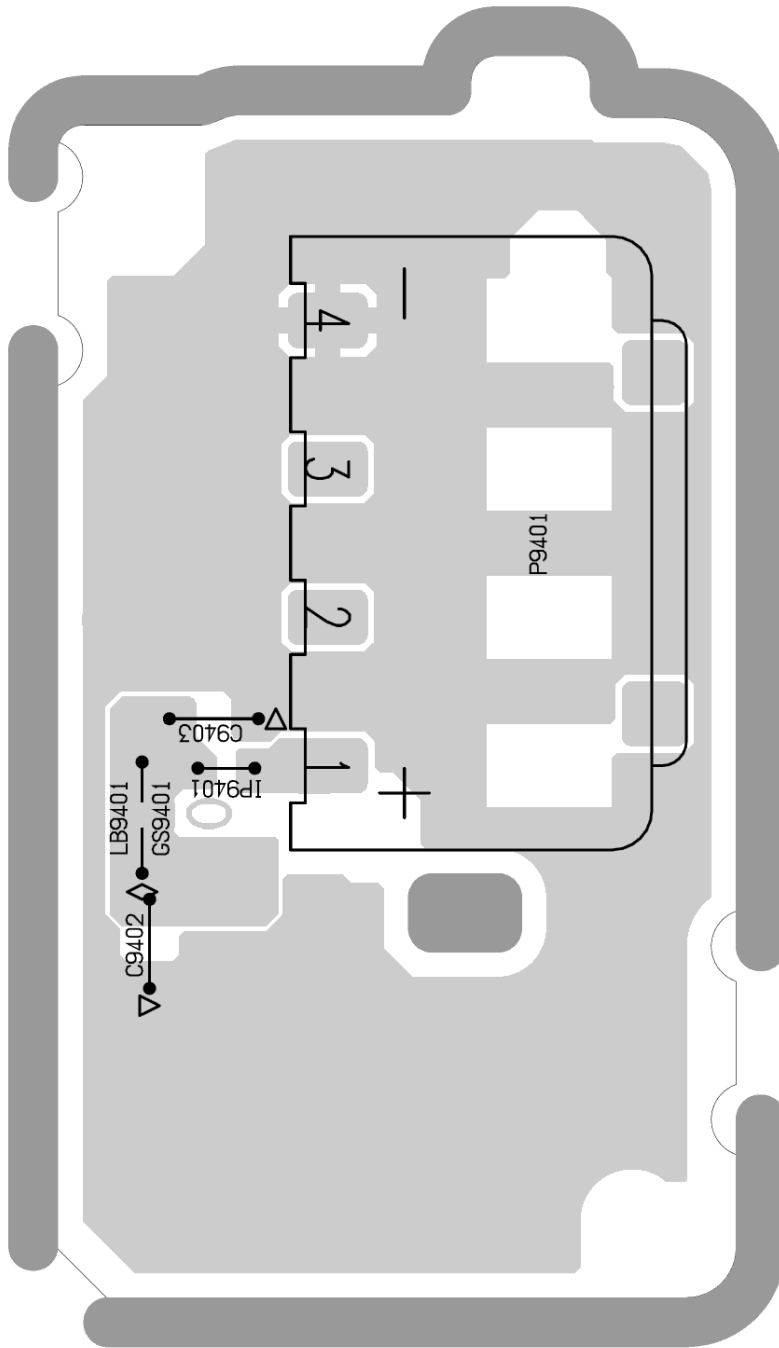




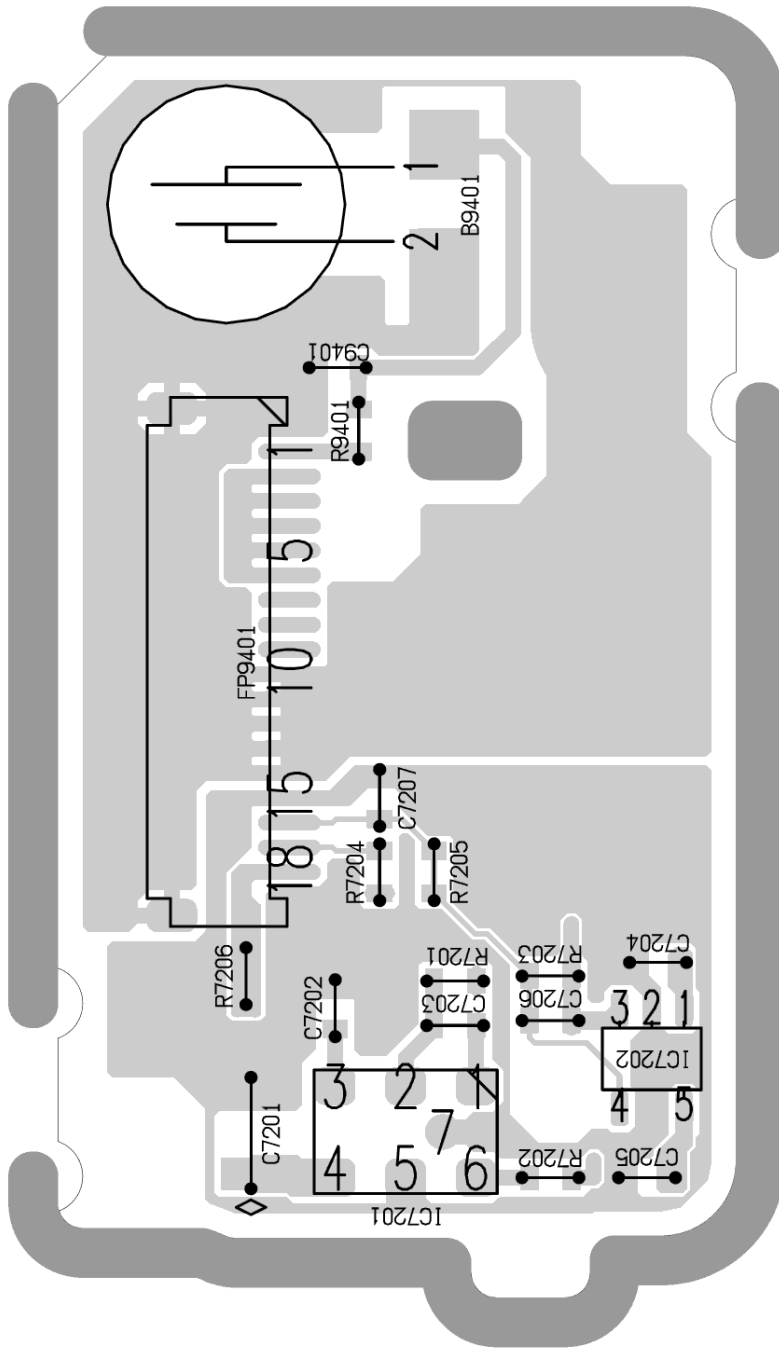
---

**Model No. : DMC-TZ90/TZ91/TZ92/TZ93/ZS70 Battery P.C.B. (Component Side)**

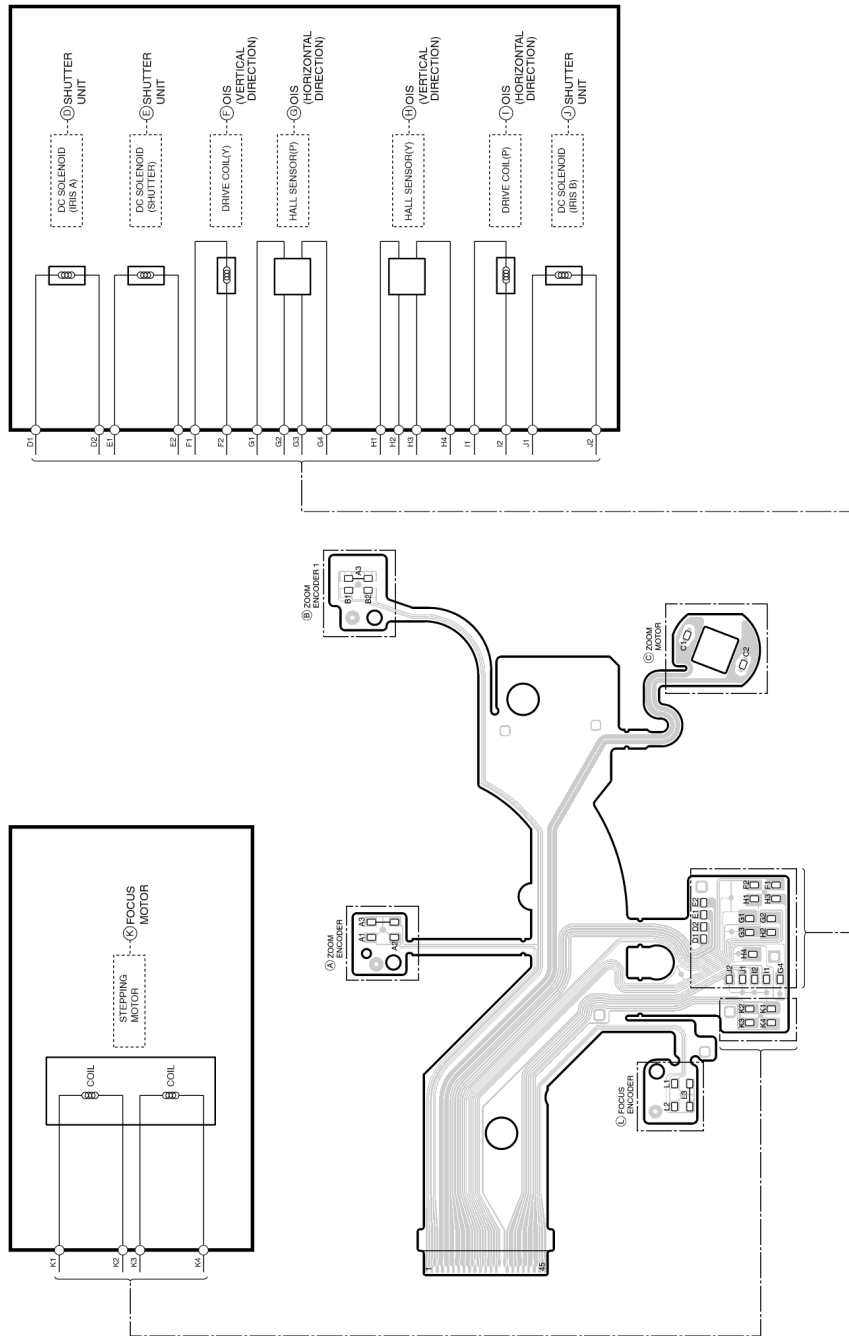
---



Model No. : DMC-TZ90/TZ91/TZ92/TZ93/ZS70 Battery P.C.B. (Foil Side)



**Model No. : DMC-TZ90/TZ91/TZ92/TZ93/ZS70 Lens Flex P.C.B.**



**Model No. : DMC-TZ90/TZ91/TZ92/TZ93/ZS70 Parts List**

Change	Safety	Ref. No.	Part No.	Part Name & Description	Q'ty	Remarks
		C1010	FLJ1A106A043	C.CAPACITOR CH 10V 10U	1	
		C1011	FLG1H330A834	C.CAPACITOR CH 50V 33P	1	
		C1020	FLJ1A106A043	C.CAPACITOR CH 10V 10U	1	
		C1021	FLG1H680A834	C.CAPACITOR CH 50V 68P	1	
		C1030	FLJ1A106A043	C.CAPACITOR CH 10V 10U	1	
		C1031	FLG1H270A834	C.CAPACITOR CH 50V 27P	1	
		C1040	FLJ1A106A043	C.CAPACITOR CH 10V 10U	1	
		C1041	FLG1H471A830	C.CAPACITOR CH 50V 470P	1	
		C1051	FLJ1A106A043	C.CAPACITOR CH 10V 10U	1	
		C1052	FLH1C105A167	C.CAPACITOR CH 16V 1U	1	
		C1053	FLG1H392A830	C.CAPACITOR CH 50V 3900P	1	
		C1054	FLG1C104A077	C.CAPACITOR CH 16V 0.1U	1	
		C1055	FLJ0J2260004	C.CAPACITOR CH 6.3V 22U	1	
		C1056	FLJ1A106A043	C.CAPACITOR CH 10V 10U	1	
		C1061	FLJ1A106A043	C.CAPACITOR CH 10V 10U	1	
		C1062	FLH1C105A167	C.CAPACITOR CH 16V 1U	1	
		C1063	FLG1H392A830	C.CAPACITOR CH 50V 3900P	1	
		C1064	FLG1C104A077	C.CAPACITOR CH 16V 0.1U	1	
		C1065	FLJ0J2260004	C.CAPACITOR CH 6.3V 22U	1	
		C1066	FLJ1A106A043	C.CAPACITOR CH 10V 10U	1	
		C1067	FLH1C105A167	C.CAPACITOR CH 16V 1U	1	
		C1068	FLH1C105A167	C.CAPACITOR CH 16V 1U	1	
		C1080	FLH1E105A116	C.CAPACITOR CH 25V 1U	1	
		C1081	FLG0J1050007	C.CAPACITOR CH 6.3V 1U	1	
		C1082	FLH1C105A167	C.CAPACITOR CH 16V 1U	1	
		C1083	FLG1C104A077	C.CAPACITOR CH 16V 0.1U	1	
		C1110	FLG0J1050007	C.CAPACITOR CH 6.3V 1U	1	
		C1111	FLG0J1050007	C.CAPACITOR CH 6.3V 1U	1	
		C1120	FLG0J1050007	C.CAPACITOR CH 6.3V 1U	1	
		C1121	FLG0J1050007	C.CAPACITOR CH 6.3V 1U	1	
		C1130	FLH1C105A167	C.CAPACITOR CH 16V 1U	1	
		C1131	FLH1C105A167	C.CAPACITOR CH 16V 1U	1	
		C1210	FLH1C105A167	C.CAPACITOR CH 16V 1U	1	
		C1211	FLH1C105A167	C.CAPACITOR CH 16V 1U	1	
		C1220	FLG0J1050007	C.CAPACITOR CH 6.3V 1U	1	GC, GA, GN, P, PP, GH, GT, GK
		C1221	FLG0J1050007	C.CAPACITOR CH 6.3V 1U	1	
		C1222	FLG0J1050007	C.CAPACITOR CH 6.3V 1U	1	EG, EP, EF, EB
		C1230	FLG0J1050007	C.CAPACITOR CH 6.3V 1U	1	
		C1231	FLG0J1050007	C.CAPACITOR CH 6.3V 1U	1	
		C1240	FLH1C105A167	C.CAPACITOR CH 16V 1U	1	
		C1241	FLH1C105A167	C.CAPACITOR CH 16V 1U	1	
		C1310	FLH1C105A167	C.CAPACITOR CH 16V 1U	1	
		C1311	FLH1C105A167	C.CAPACITOR CH 16V 1U	1	
		C1410	FLG0J1050007	C.CAPACITOR CH 6.3V 1U	1	
		C1411	FLG0J1050007	C.CAPACITOR CH 6.3V 1U	1	
		C1501	FLJ1A106A043	C.CAPACITOR CH 10V 10U	1	
		C1502	FLG1C104A077	C.CAPACITOR CH 16V 0.1U	1	
		C1503	FLG0J1050007	C.CAPACITOR CH 6.3V 1U	1	
		C1504	FLG0J1050007	C.CAPACITOR CH 6.3V 1U	1	
		C1505	FLH1A105A025	C.CAPACITOR CH 10V 1U	1	
		C1506	FLH0J2250008	C.CAPACITOR CH 6.3V 2.2U	1	
		C1508	FLJ1A106A043	C.CAPACITOR CH 10V 10U	1	
		C1509	FLH1C105A167	C.CAPACITOR CH 16V 1U	1	
		C1510	FLH1C105A167	C.CAPACITOR CH 16V 1U	1	
		C1511	FLH1A224A012	C.CAPACITOR CH 10V 0.22U	1	
		C1512	FLG1C104A077	C.CAPACITOR CH 16V 0.1U	1	
		C1513	FLG1E103A144	C.CAPACITOR CH 25V 0.01U	1	
		C1515	FLH1C105A167	C.CAPACITOR CH 16V 1U	1	
		C1516	FLH1C105A167	C.CAPACITOR CH 16V 1U	1	
		C1517	FLG0J1050007	C.CAPACITOR CH 6.3V 1U	1	
		C1525	FLH1C105A167	C.CAPACITOR CH 16V 1U	1	
		C1526	FLG1H471A830	C.CAPACITOR CH 50V 470P	1	



**Model No. : DMC-TZ90/TZ91/TZ92/TZ93/ZS70 Parts List**

Change	Safety	Ref. No.	Part No.	Part Name & Description	Q'ty	Remarks
		C1901	F1H1A475A083	C.CAPACITOR CH 10V 4.7U	1	
		C1902	F1H1A475A083	C.CAPACITOR CH 10V 4.7U	1	
		C1903	F1H1A475A083	C.CAPACITOR CH 10V 4.7U	1	
		C1904	F1H1A475A083	C.CAPACITOR CH 10V 4.7U	1	
		C1905	F1H1C105A167	C.CAPACITOR CH 16V 1U	1	
		C1906	F1H1C105A167	C.CAPACITOR CH 16V 1U	1	
		C1907	F1H1C105A167	C.CAPACITOR CH 16V 1U	1	
		C1908	F1G1E103A144	C.CAPACITOR CH 25V 0.01U	1	
		C1909	F1G1C223A146	C.CAPACITOR CH 16V 0.022U	1	
		C1910	F1H1C105A167	C.CAPACITOR CH 16V 1U	1	
		C2001	F1G1C104A077	C.CAPACITOR CH 16V 0.1U	1	
		C2002	F1G0J1050007	C.CAPACITOR CH 6.3V 1U	1	
		C2003	F1G1C104A077	C.CAPACITOR CH 16V 0.1U	1	
		C5001	F1G1C223A146	C.CAPACITOR CH 16V 0.022U	1	
		C5002	F1G1C223A146	C.CAPACITOR CH 16V 0.022U	1	
		C5005	F1G0J1050007	C.CAPACITOR CH 6.3V 1U	1	
		C5006	F1G0J1050007	C.CAPACITOR CH 6.3V 1U	1	
		C5007	F1G0J1050007	C.CAPACITOR CH 6.3V 1U	1	
		C5009	F1H0J4750004	C.CAPACITOR CH 6.3V 4.7U	1	
		C5010	F1G1C104A077	C.CAPACITOR CH 16V 0.1U	1	
		C5012	F1G0J1050007	C.CAPACITOR CH 6.3V 1U	1	
		C5013	F1G0J1050007	C.CAPACITOR CH 6.3V 1U	1	
		C5015	F1G1C104A077	C.CAPACITOR CH 16V 0.1U	1	
		C5016	F1G1C104A077	C.CAPACITOR CH 16V 0.1U	1	
		C5020	F1G1H470A834	C.CAPACITOR CH 50V 47P	1	
		C5021	F1G1H470A834	C.CAPACITOR CH 50V 47P	1	
		C6001	F1G1H9R0A833	C.CAPACITOR CH 50V 9P	1	
		C6004	F1G1C104A077	C.CAPACITOR CH 16V 0.1U	1	
		C6005	F1G1E103A144	C.CAPACITOR CH 25V 0.01U	1	
		C6006	F1G1E103A144	C.CAPACITOR CH 25V 0.01U	1	
		C6007	F1G1C104A077	C.CAPACITOR CH 16V 0.1U	1	
		C6008	F1G1C104A077	C.CAPACITOR CH 16V 0.1U	1	
		C6009	F1G1C104A077	C.CAPACITOR CH 16V 0.1U	1	
		C6010	F1G1C104A077	C.CAPACITOR CH 16V 0.1U	1	
		C6011	F1G1C104A077	C.CAPACITOR CH 16V 0.1U	1	
		C6012	F1G1C104A077	C.CAPACITOR CH 16V 0.1U	1	
		C6013	F1G1C104A077	C.CAPACITOR CH 16V 0.1U	1	
		C6014	F1G1C104A077	C.CAPACITOR CH 16V 0.1U	1	
		C6019	F1G1H102A830	C.CAPACITOR CH 50V 1000P	1	
		C6021	F1G1H102A830	C.CAPACITOR CH 50V 1000P	1	
		C6022	F1G1H102A830	C.CAPACITOR CH 50V 1000P	1	
		C6023	F1J1A106A043	C.CAPACITOR CH 10V 10U	1	
		C6024	F1G1C104A077	C.CAPACITOR CH 16V 0.1U	1	
		C6025	F1G1E103A144	C.CAPACITOR CH 25V 0.01U	1	
		C6026	F1G1E103A144	C.CAPACITOR CH 25V 0.01U	1	
		C6027	F1G1E103A144	C.CAPACITOR CH 25V 0.01U	1	
		C6028	F1G1E103A144	C.CAPACITOR CH 25V 0.01U	1	
		C6030	F1J1A106A043	C.CAPACITOR CH 10V 10U	1	
		C6031	F1G1C104A077	C.CAPACITOR CH 16V 0.1U	1	
		C6032	F1G1E103A144	C.CAPACITOR CH 25V 0.01U	1	
		C6033	F1J1A106A043	C.CAPACITOR CH 10V 10U	1	
		C6034	F1G1C104A077	C.CAPACITOR CH 16V 0.1U	1	
		C6035	F1G1E103A144	C.CAPACITOR CH 25V 0.01U	1	
		C6036	F1J0J2260004	C.CAPACITOR CH 6.3V 22U	1	
		C6037	F1G1C104A077	C.CAPACITOR CH 16V 0.1U	1	
		C6038	F1G1E103A144	C.CAPACITOR CH 25V 0.01U	1	
		C6039	F1G1E103A144	C.CAPACITOR CH 25V 0.01U	1	
		C6040	F1G1C104A077	C.CAPACITOR CH 16V 0.1U	1	
		C6041	F1G1E103A144	C.CAPACITOR CH 25V 0.01U	1	
		C6042	F1G1E103A144	C.CAPACITOR CH 25V 0.01U	1	
		C6044	F1G1C104A077	C.CAPACITOR CH 16V 0.1U	1	
		C6045	F1G1E103A144	C.CAPACITOR CH 25V 0.01U	1	




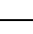
**Model No. : DMC-TZ90/TZ91/TZ92/TZ93/ZS70 Parts List**

Change	Safety	Ref. No.	Part No.	Part Name & Description	Q'ty	Remarks
		C6046	FLJ1A106A043	C.CAPACITOR CH 10V 10U	1	
		C6047	FIG1C104A077	C.CAPACITOR CH 16V 0.1U	1	
		C6048	FIG1E103A144	C.CAPACITOR CH 25V 0.01U	1	
		C6049	FIG1C104A077	C.CAPACITOR CH 16V 0.1U	1	
		C6050	FIG1E103A144	C.CAPACITOR CH 25V 0.01U	1	
		C6051	FIG1C104A077	C.CAPACITOR CH 16V 0.1U	1	
		C6052	FIG1E103A144	C.CAPACITOR CH 25V 0.01U	1	
		C6053	FIG1E103A144	C.CAPACITOR CH 25V 0.01U	1	
		C6054	FIG1E103A144	C.CAPACITOR CH 25V 0.01U	1	
		C6055	FIG1C104A077	C.CAPACITOR CH 16V 0.1U	1	
		C6056	FIG1E103A144	C.CAPACITOR CH 25V 0.01U	1	
		C6057	FIG1H100A834	C.CAPACITOR CH 50V 10P	1	
		C6058	FIG1H102A830	C.CAPACITOR CH 50V 1000P	1	
		C6061	FIG1E103A144	C.CAPACITOR CH 25V 0.01U	1	
		C6062	FIG1E103A144	C.CAPACITOR CH 25V 0.01U	1	
		C6063	FIG1E103A144	C.CAPACITOR CH 25V 0.01U	1	
		C6064	FIG1E103A144	C.CAPACITOR CH 25V 0.01U	1	
		C6065	FIG1E103A144	C.CAPACITOR CH 25V 0.01U	1	
		C6066	FIG1E103A144	C.CAPACITOR CH 25V 0.01U	1	
		C6067	FIG1E103A144	C.CAPACITOR CH 25V 0.01U	1	
		C6068	FIG1E103A144	C.CAPACITOR CH 25V 0.01U	1	
		C6069	FIG1E103A144	C.CAPACITOR CH 25V 0.01U	1	
		C6071	FLJ1A106A043	C.CAPACITOR CH 10V 10U	1	
		C6072	FLJ1A106A043	C.CAPACITOR CH 10V 10U	1	
		C6201	FIG0J4750004	C.CAPACITOR CH 6.3V 4.7U	1	
		C6202	FIG1C104A077	C.CAPACITOR CH 16V 0.1U	1	
		C6203	FIG1C104A077	C.CAPACITOR CH 16V 0.1U	1	
		C6502	FIG1H5R0A831	C.CAPACITOR CH 50V 5P	1	
		C6503	FIG1H5R0A831	C.CAPACITOR CH 50V 5P	1	
		C6504	FIG1H5R0A831	C.CAPACITOR CH 50V 5P	1	
		C6505	FIG1H5R0A831	C.CAPACITOR CH 50V 5P	1	
		C6506	FIG1H5R0A831	C.CAPACITOR CH 50V 5P	1	
		C6507	FIG0J1060006	C.CAPACITOR CH 6.3V 10U	1	
		C6509	FIG0J4750004	C.CAPACITOR CH 6.3V 4.7U	1	
		C6510	FIG1E103A144	C.CAPACITOR CH 25V 0.01U	1	
		C6512	FIG1A105A025	C.CAPACITOR CH 10V 1U	1	
		C6513	FIG1A105A025	C.CAPACITOR CH 10V 1U	1	
		C6514	FIG1A105A025	C.CAPACITOR CH 10V 1U	1	
		C7001	FIG1A105A025	C.CAPACITOR CH 10V 1U	1	
		C7003	FIG1A105A025	C.CAPACITOR CH 10V 1U	1	
		C7006	FIG1E103A144	C.CAPACITOR CH 25V 0.01U	1	
		C7007	FIG1E103A144	C.CAPACITOR CH 25V 0.01U	1	
		C7008	FIG1E103A144	C.CAPACITOR CH 25V 0.01U	1	
		C7009	FIG1E103A144	C.CAPACITOR CH 25V 0.01U	1	
		C7010	FIG0J1050007	C.CAPACITOR CH 6.3V 1U	1	
		C7011	FIG0J1050007	C.CAPACITOR CH 6.3V 1U	1	
		C7014	FIG1A105A025	C.CAPACITOR CH 10V 1U	1	
		C7019	FLJ1A106A043	C.CAPACITOR CH 10V 10U	1	
		C7101	FIG0J4750004	C.CAPACITOR CH 6.3V 4.7U	1	
		C7102	FIG1C104A077	C.CAPACITOR CH 16V 0.1U	1	
		C7103	FIG1C104A077	C.CAPACITOR CH 16V 0.1U	1	
		C7104	FIG1C104A077	C.CAPACITOR CH 16V 0.1U	1	
		C7105	FIG1C104A077	C.CAPACITOR CH 16V 0.1U	1	
		C7201	FLJ1A106A043	C.CAPACITOR CH 10V 10U	1	
		C7202	FIG1C104A077	C.CAPACITOR CH 16V 0.1U	1	
		C7203	FIG1E222A086	C.CAPACITOR CH 25V 2200P	1	
		C7204	FIG1E103A144	C.CAPACITOR CH 25V 0.01U	1	
		C7205	FIG0J1050007	C.CAPACITOR CH 6.3V 1U	1	
		C7206	FIG1E103A144	C.CAPACITOR CH 25V 0.01U	1	
		C9002	FIG1C104A077	C.CAPACITOR CH 16V 0.1U	1	
		C9006	FIG1C104A077	C.CAPACITOR CH 16V 0.1U	1	
		C9007	FIG1C104A077	C.CAPACITOR CH 16V 0.1U	1	

**Model No. : DMC-TZ90/TZ91/TZ92/TZ93/ZS70 Parts List**

Change	Safety	Ref. No.	Part No.	Part Name & Description	Q'ty	Remarks
		C9010	F1H0J4750004	C.CAPACITOR CH 6.3V 4.7U	1	
		C9027	F1H0J4750004	C.CAPACITOR CH 6.3V 4.7U	1	
		C9028	F1H0J1060006	C.CAPACITOR CH 6.3V 10U	1	
		C9029	F1G0J1050007	C.CAPACITOR CH 6.3V 1U	1	
		C9030	F1J1A106A043	C.CAPACITOR CH 10V 10U	1	
		C9031	F1G1C104A077	C.CAPACITOR CH 16V 0.1U	1	
		C9032	F1J1A106A043	C.CAPACITOR CH 10V 10U	1	
		C9033	F1H0J4750004	C.CAPACITOR CH 6.3V 4.7U	1	
		C9071	F1G0J1050007	C.CAPACITOR CH 6.3V 1U	1	
		C9078	F1G1C104A077	C.CAPACITOR CH 16V 0.1U	1	
		C9081	F1G1C104A077	C.CAPACITOR CH 16V 0.1U	1	
		C9082	F1G1H101A834	C.CAPACITOR CH 50V 100P	1	
		C9083	F1G1H101A834	C.CAPACITOR CH 50V 100P	1	
		C9085	F1H1A475A083	C.CAPACITOR CH 10V 4.7U	1	
		C9086	F1G0J1050007	C.CAPACITOR CH 6.3V 1U	1	
		C9101	F1G1H102A830	C.CAPACITOR CH 50V 1000P	1	
		C9102	F1G0J1050007	C.CAPACITOR CH 6.3V 1U	1	
		C9103	F1G1H8R0A833	C.CAPACITOR CH 50V 8P	1	
		C9104	F1G1H8R0A833	C.CAPACITOR CH 50V 8P	1	
		C9105	F1G0J1050007	C.CAPACITOR CH 6.3V 1U	1	
		C9106	F1J1A106A043	C.CAPACITOR CH 10V 10U	1	
		C9111	F1J1A106A043	C.CAPACITOR CH 10V 10U	1	
		C9402	F1H1C105A167	C.CAPACITOR CH 16V 1U	1	
		D1040	B0ACRC000001	DIODE	1	E.S.D.
		D1501	DB2S31100L	DIODE	1	E.S.D.
		D1502	DB2S31100L	DIODE	1	E.S.D.
		D1503	DB2S31100L	DIODE	1	E.S.D.
		D9102	B0ADEJ000054	DIODE	1	E.S.D.
		D9104	B0ADEJ000054	DIODE	1	E.S.D.
		ET9002	K4CC01000001	EARTH SPRING	1	
		FL2001	EXC28CH900U	FILTER	1	
		FL2002	EXC28CH900U	FILTER	1	
		FP9001	K1MY51BA0667	CONNECTOR 51P	1	
		FP9002	K1MY25BA0556	CONNECTOR 25P	1	
		FP9003	K1MY41BA0667	CONNECTOR 41P	1	
		FP9004	K1MY45BA0667	CONNECTOR 45P	1	
		FP9006	K1MY13BA0585	CONNECTOR 13P	1	
		FP9008	K1MY33BA0556	CONNECTOR 33P	1	
		FP9009	K1MY15BA0585	CONNECTOR 15P	1	
		FP9010	K1MY08BA0557	CONNECTOR 8P	1	
		FP9011	K1MY05BA0557	CONNECTOR 5P	1	
		FP9050	K1MY06BA0557	CONNECTOR 6P	1	
		FP9051	K1MY18BA0633	CONNECTOR 18P	1	
		FP9401	K1MY18BA0633	CONNECTOR 18P	1	
		IC1001	C1ZBZ0005550	IC	1	E.S.D.
		IC1050	C0DBAYY02385	IC	1	E.S.D.
		IC1060	C0DBAYY02385	IC	1	E.S.D.
		IC1061	C0DBGYY05343	IC	1	E.S.D.
		IC1080	C0DBAYY02664	IC	1	E.S.D.
		IC1110	C0DBGYY03640	IC	1	E.S.D.
		IC1120	C0DBGYY03614	IC	1	E.S.D.
		IC1130	C0DBGYY03678	IC	1	E.S.D.
		IC1210	C0DBGYY05359	IC	1	E.S.D.
		IC1220	C0DBGYY03614	IC	1	E.S.D.
		IC1230	C0DBGYY03614	IC	1	E.S.D.
		IC1240	C0DBGYY05349	IC	1	E.S.D.
		IC1310	C0DBGYY02527	IC	1	E.S.D.
		IC1410	C0DBGYY03640	IC	1	E.S.D.
		IC1501	C1ZBZ0005562	IC	1	E.S.D.
		IC1502	SUBF000022	IC	1	E.S.D. [INBD]
		IC1503	C1CB00004574	IC	1	E.S.D.
		IC1510	C0DBGYY03972	IC	1	E.S.D.

**Model No. : DMC-TZ90/TZ91/TZ92/TZ93/ZS70 Parts List**

Change	Safety	Ref. No.	Part No.	Part Name & Description	Q'ty	Remarks
		IC1511	C0DBGYY06165	IC	1	E.S.D.
		IC6001	1SM1V09N68Z	IC	1	E.S.D.
		IC6004	1VK1DCTZ90Z	IC	1	E.S.D.
		IC6201	L2EE00000038	IC	1	E.S.D.
		IC6501	C0DBGYY00779	IC	1	E.S.D.
		IC7101	EWTS9PDL1A	IC	1	E.S.D. [INBD]
		IC7201	EWTS9RCL1A	IC	1	E.S.D. [INBD]
		IC7202	C0ABGA000035	IC	1	E.S.D.
		IC9001	C0JBAU000226	IC	1	E.S.D.
		IC9002	B4ZZ00000031	IC	1	E.S.D.
		IC9101	C1AB00003449	IC	1	E.S.D.
		IP1001	ERBRD0R75X	FUSE 32V 750MA	1	
		IP1080	K5H1512A0024	FUSE 50V 0.15A	1	
		IP2001	ERBRD2R00X	FUSE 32V 2.0A	1	
		IP9401	ERBRD2R50X	FUSE 32V 2.5A	1	
		JK2001	K1FY105E0014	JACK, USB	1	
		JK2002	K1FY119E0057	JACK, HDMI	1	
		L1010	G1C150MA0477	CHIP INDUCTOR 15UH	1	
		L1020	G1C150MA0477	CHIP INDUCTOR 15UH	1	
		L1030	G1C150MA0477	CHIP INDUCTOR 15UH	1	
		L1040	G1C4R7MA0584	CHIP INDUCTOR 4.7UH	1	
		L1050	G1C1R5MA0943	CHIP INDUCTOR 1.5UH	1	
		L1060	G1C2R2MA0477	CHIP INDUCTOR 2.2UH	1	
		L1080	G1C100MA0392	CHIP INDUCTOR 10UH	1	
		L1500	G1C2R2MA0392	CHIP INDUCTOR 2.2UH	1	
		L2001	EXC24CE900U	FILTER	1	
		LB2001	J0JCC0000415	FILTER	1	
		LB6002	J0JFC0000006	FILTER	1	
		LB9010	J0JCC0000415	FILTER	1	
		LB9011	J0JCC0000415	FILTER	1	
		P6501	K1NA09E00166	SD CARD CONNECTOR	1	
		P9401	K4ZZ04000064	CONNECTOR 4P	1	
		Q1080	MTM861280LBF	TRANSISTOR	1	E.S.D.
		Q1502	B1CHPB000008	TRANSISTOR	1	E.S.D.
		Q1505	B1CFGC000022	TRANSISTOR	1	E.S.D.
		Q1506	B1CFGC000022	TRANSISTOR	1	E.S.D.
		Q1507	B1CFGC000022	TRANSISTOR	1	E.S.D.
		Q1508	B1ABCF000302	TRANSISTOR	1	E.S.D.
		Q2001	B1CFGD000003	TRANSISTOR	1	E.S.D.
		Q2002	B1CFJD000007	TRANSISTOR	1	E.S.D.
		Q6501	MTM861270LBF	TRANSISTOR	1	E.S.D.
		Q9081	B1HFCFA00035	TRANSISTOR	1	E.S.D.
		Q9101	B1ABCF000302	TRANSISTOR	1	E.S.D.
		QR1080	B1GBCFYY0217	TRANSISTOR-RESISTOR	1	E.S.D.
		QR1081	B1GBCFYY0218	TRANSISTOR-RESISTOR	1	E.S.D.
		QR1082	B1GBCFYY0218	TRANSISTOR-RESISTOR	1	E.S.D.
		QR1503	B1GBCFYY0224	TRANSISTOR-RESISTOR	1	E.S.D.
		QR1504	B1GBCFYY0224	TRANSISTOR-RESISTOR	1	E.S.D.
		QR1505	B1GBCFYY0224	TRANSISTOR-RESISTOR	1	E.S.D.
		QR2003	B1GKCFJN0008	TRANSISTOR-RESISTOR	1	E.S.D.
		QR6501	B1GBCFYY0217	TRANSISTOR-RESISTOR	1	E.S.D.
		QR6502	B1GDCFYY0150	TRANSISTOR-RESISTOR	1	E.S.D.
		QR9102	B1GDCFYY0150	TRANSISTOR-RESISTOR	1	E.S.D.
		R1011	D1BA5602A022	M.RESISTOR CH 1/16W 56K	1	
		R1012	D1BA1602A022	M.RESISTOR CH 1/16W 16K	1	
		R1022	D1BA6802A022	M.RESISTOR CH 1/16W 68K	1	
		R1023	D1BA2402A022	M.RESISTOR CH 1/16W 24K	1	
		R1031	D1BA1103A022	M.RESISTOR CH 1/16W 110K	1	
		R1032	D1BA2002A022	M.RESISTOR CH 1/16W 20K	1	
		R1041	D1BA1502A022	M.RESISTOR CH 1/16W 15K	1	
		R1042	D1BA6802A022	M.RESISTOR CH 1/16W 68K	1	
		R1044	D1BA3302A022	M.RESISTOR CH 1/16W 33K	1	

**Model No. : DMC-TZ90/TZ91/TZ92/TZ93/ZS70 Parts List**

Change	Safety	Ref. No.	Part No.	Part Name & Description	Q'ty	Remarks
		R1053	D1BA1002A022	M.RESISTOR CH 1/16W 10K	1	
		R1054	D1BA3002A022	M.RESISTOR CH 1/16W 30K	1	
		R1063	D1BA2202A022	M.RESISTOR CH 1/16W 22K	1	
		R1064	D1BA2002A022	M.RESISTOR CH 1/16W 20K	1	
		R1081	D1BA14R0A023	M.RESISTOR CH 1/16W 14	1	
		R1082	DOGA473JA023	M.RESISTOR CH 1/10W 47K	1	
		R1083	DOGA103JA023	M.RESISTOR CH 1/10W 10K	1	
		R1085	DOGA152JA023	M.RESISTOR CH 1/10W 1.5K	1	
		R1086	DOGA223JA023	M.RESISTOR CH 1/10W 22K	1	
		R1501	D1BA1002A022	M.RESISTOR CH 1/16W 10K	1	
		R1507	DOGA470JA023	M.RESISTOR CH 1/10W 47	1	
		R1508	DOGA332JA023	M.RESISTOR CH 1/10W 3.3K	1	
		R1509	DOGA332JA023	M.RESISTOR CH 1/10W 3.3K	1	
		R1511	D1BA6803A022	M.RESISTOR CH 1/10W 680K	1	
		R1512	D1BA3003A022	M.RESISTOR CH 1/10W 300K	1	
		R1513	DOGA103JA023	M.RESISTOR CH 1/10W 10K	1	
		R1520	DOGA364JA023	M.RESISTOR CH 1/10W 360K	1	
		R1521	DOGA564JA023	M.RESISTOR CH 1/10W 560K	1	
		R1522	D1BA3001A022	M.RESISTOR CH 1/16W 3K	1	
		R1531	D1BA8201A022	M.RESISTOR CH 1/16W 8.2K	1	
		R1560	DOGA104JA023	M.RESISTOR CH 1/10W 100K	1	
		R1561	DOGA104JA023	M.RESISTOR CH 1/10W 100K	1	
		R1573	DOGA104JA023	M.RESISTOR CH 1/10W 100K	1	
		R1591	DOGA334JA023	M.RESISTOR CH 1/10W 330K	1	
		R1592	DOGA104JA023	M.RESISTOR CH 1/10W 100K	1	
		R1593	DOGA102JA023	M.RESISTOR CH 1/10W 1K	1	
		R1902	DOGA104JA023	M.RESISTOR CH 1/10W 100K	1	
		R1903	D1BA8202A022	M.RESISTOR CH 1/16W 82K	1	
		R2007	DOGA473JA023	M.RESISTOR CH 1/10W 47K	1	
		R2008	DOGA273JA023	M.RESISTOR CH 1/10W 27K	1	
		R2010	DOGA330JA023	M.RESISTOR CH 1/10W 33	1	
		R2011	DOGA330JA023	M.RESISTOR CH 1/10W 33	1	
		R2014	DOGA202JA023	M.RESISTOR CH 1/10W 2K	1	
		R2015	DOGA202JA023	M.RESISTOR CH 1/10W 2K	1	
		R5002	DOGA333JA023	M.RESISTOR CH 1/10W 33K	1	
		R5003	DOGA333JA023	M.RESISTOR CH 1/10W 33K	1	
		R5006	DOGA222JA023	M.RESISTOR CH 1/10W 2.2K	1	
		R5008	DOGA222JA023	M.RESISTOR CH 1/10W 2.2K	1	
		R6004	DOGA103JA023	M.RESISTOR CH 1/10W 10K	1	
		R6005	D1BA5100A022	M.RESISTOR CH 1/16W 510	1	
		R6006	D1BA5100A022	M.RESISTOR CH 1/16W 510	1	
		R6007	D1BA5100A022	M.RESISTOR CH 1/16W 510	1	
		R6008	D1BA5100A022	M.RESISTOR CH 1/16W 510	1	
		R6009	D1BA5100A022	M.RESISTOR CH 1/16W 510	1	
		R6010	D1BA5100A022	M.RESISTOR CH 1/16W 510	1	
		R6011	D1BA5100A022	M.RESISTOR CH 1/16W 510	1	
		R6012	D1BA5100A022	M.RESISTOR CH 1/16W 510	1	
		R6013	D1BA5100A022	M.RESISTOR CH 1/16W 510	1	
		R6014	D1BA5100A022	M.RESISTOR CH 1/16W 510	1	
		R6015	D1BA5100A022	M.RESISTOR CH 1/16W 510	1	
		R6016	D1BA5100A022	M.RESISTOR CH 1/16W 510	1	
		R6017	D1BA2400A022	M.RESISTOR CH 1/16W 240	1	
		R6018	D1BA2400A022	M.RESISTOR CH 1/16W 240	1	
		R6019	D1BA2400A022	M.RESISTOR CH 1/16W 240	1	
		R6020	D1BA2400A022	M.RESISTOR CH 1/16W 240	1	
		R6026	D1BA6801A022	M.RESISTOR CH 1/16W 6.8K	1	
		R6027	D1BA4701A022	M.RESISTOR CH 1/16W 4.7K	1	
		R6028	D1BA2000A022	M.RESISTOR CH 1/16W 200	1	
		R6032	DOGA470JA023	M.RESISTOR CH 1/10W 47	1	
		R6035	DOGA473JA023	M.RESISTOR CH 1/10W 47K	1	
		R6039	DOGA102JA023	M.RESISTOR CH 1/10W 1K	1	
		R6041	DOGA270JA023	M.RESISTOR CH 1/10W 27	1	

**Model No. : DMC-TZ90/TZ91/TZ92/TZ93/ZS70 Parts List**

Change	Safety	Ref. No.	Part No.	Part Name & Description	Q'ty	Remarks
		R6042	D0GA470JA023	M.RESISTOR CH 1/10W 47	1	
		R6046	D0GA105JA023	M.RESISTOR CH 1/10W 1M	1	
		R6047	D0GA102JA023	M.RESISTOR CH 1/10W 1K	1	
		R6061	D0GA302JA023	M.RESISTOR CH 1/10W 3K	1	
		R6062	D0GA302JA023	M.RESISTOR CH 1/10W 3K	1	
		R6063	D0GA302JA023	M.RESISTOR CH 1/10W 3K	1	
		R6064	D0GA302JA023	M.RESISTOR CH 1/10W 3K	1	
		R6070	D0GA472JA023	M.RESISTOR CH 1/10W 4.7K	1	
		R6071	D1BA8201A022	M.RESISTOR CH 1/16W 8.2K	1	
		R6072	D1BA1002A022	M.RESISTOR CH 1/16W 10K	1	
		R6073	D0GA472JA023	M.RESISTOR CH 1/10W 4.7K	1	
		R6074	D0GA472JA023	M.RESISTOR CH 1/10W 4.7K	1	
		R6076	D0GA102JA023	M.RESISTOR CH 1/10W 1K	1	
		R6125	D0GAR00J0005	M.RESISTOR CH 1/10W 0	1	EG,EP,EF,EB
		R6501	D0GA102JA023	M.RESISTOR CH 1/10W 1K	1	
		R6502	D0GA223JA023	M.RESISTOR CH 1/10W 22K	1	
		R6504	D0GA104JA023	M.RESISTOR CH 1/10W 100K	1	
		R6505	D0GA103JA023	M.RESISTOR CH 1/10W 10K	1	
		R6509	D0GA331JA023	M.RESISTOR CH 1/10W 330	1	
		R6510	D0GA330JA023	M.RESISTOR CH 1/10W 33	1	
		R7002	D1BA68R0A022	M.RESISTOR CH 1/16W 68	1	
		R7007	D1BA68R0A022	M.RESISTOR CH 1/16W 68	1	
		R7009	D1BA1R00A079	M.RESISTOR CH 1/16W 1	1	
		R7021	D1BA8201A022	M.RESISTOR CH 1/16W 8.2K	1	
		R7201	D0GA223JA023	M.RESISTOR CH 1/10W 22K	1	
		R7202	D1BA1002A022	M.RESISTOR CH 1/16W 10K	1	
		R7203	D1BA6802A022	M.RESISTOR CH 1/16W 68K	1	
		R7204	D1BA6802A022	M.RESISTOR CH 1/16W 68K	1	
		R9006	D0GA103JA023	M.RESISTOR CH 1/10W 10K	1	
		R9008	D0GA103JA023	M.RESISTOR CH 1/10W 10K	1	
		R9009	D0GA392JA023	M.RESISTOR CH 1/10W 3.9K	1	
		R9010	D0GA392JA023	M.RESISTOR CH 1/10W 3.9K	1	
		R9014	D0GA681JA023	M.RESISTOR CH 1/10W 680	1	
		R9031	D0GA102JA023	M.RESISTOR CH 1/10W 1K	1	
		R9069	D0GA183JA023	M.RESISTOR CH 1/10W 18K	1	
		R9070	D0GA183JA023	M.RESISTOR CH 1/10W 18K	1	
		R9071	D0GA151JA023	M.RESISTOR CH 1/10W 150	1	
		R9073	D0GA331JA023	M.RESISTOR CH 1/10W 330	1	
		R9074	D0GA331JA023	M.RESISTOR CH 1/10W 330	1	
		R9075	D0GA103JA023	M.RESISTOR CH 1/10W 10K	1	
		R9077	D0GA223JA023	M.RESISTOR CH 1/10W 22K	1	
		R9078	D0GA223JA023	M.RESISTOR CH 1/10W 22K	1	
		R9079	D0GA752JA023	M.RESISTOR CH 1/10W 7.5K	1	
		R9081	D1BA2201A022	M.RESISTOR CH 1/16W 2.2K	1	
		R9082	D1BA75R0A022	M.RESISTOR CH 1/16W 75	1	
		R9083	D1BA2202A022	M.RESISTOR CH 1/16W 22K	1	
		R9084	D0GA302JA023	M.RESISTOR CH 1/10W 3K	1	
		R9085	D0GA680JA023	M.RESISTOR CH 1/10W 68	1	
		R9086	D0GA473JA023	M.RESISTOR CH 1/10W 47K	1	
		R9087	D0GA473JA023	M.RESISTOR CH 1/10W 47K	1	
		R9097	D0GA182JA023	M.RESISTOR CH 1/10W 1.8K	1	
		R9101	D0GA102JA023	M.RESISTOR CH 1/10W 1K	1	
		R9102	D0GA102JA023	M.RESISTOR CH 1/10W 1K	1	
		R9103	D0GA102JA023	M.RESISTOR CH 1/10W 1K	1	
		R9106	ERJ2RKD105	M.RESISTOR CH 1/16W 1M	1	
		R9107	D1BA2203A022	M.RESISTOR CH 1/16W 220K	1	
		R9109	D0GA331JA023	M.RESISTOR CH 1/10W 330	1	
		R9114	D1BA3902A022	M.RESISTOR CH 1/16W 39K	1	
		R9115	D1BA1203A022	M.RESISTOR CH 1/16W 120K	1	
		R9119	D1BA3302A022	M.RESISTOR CH 1/16W 33K	1	
		R9120	D1BA7502A022	M.RESISTOR CH 1/16W 75K	1	
		R9133	D0GA473JA023	M.RESISTOR CH 1/10W 47K	1	

**Model No. : DMC-TZ90/TZ91/TZ92/TZ93/ZS70 Parts List**

Change	Safety	Ref. No.	Part No.	Part Name & Description	Q'ty	Remarks
		R9401	D0GA512JA023	M.RESISTOR CH 1/10W 5.1K	1	
		RX2003	EXB24V472JX	RESISTOR NETWORKS	1	
		RX6003	D1H84734A042	RESISTOR NETWORKS	1	
		RX6005	D1H81014A042	RESISTOR NETWORKS	1	
		RX6006	D1H81014A042	RESISTOR NETWORKS	1	
		RX6007	D1H81014A042	RESISTOR NETWORKS	1	
		RX6008	D1H81014A042	RESISTOR NETWORKS	1	
		RX6012	D1H81034A042	RESISTOR NETWORKS	1	
		RX6501	D1H84734A042	RESISTOR NETWORKS	1	
		RX6502	D1H83304A042	RESISTOR NETWORKS	1	
		RX9010	D1H84704A042	RESISTOR NETWORKS	1	
		RX9011	D1H84704A042	RESISTOR NETWORKS	1	
		RX9012	D1H84704A042	RESISTOR NETWORKS	1	
		RX9013	D1H84704A042	RESISTOR NETWORKS	1	
		RX9014	D1H84704A042	RESISTOR NETWORKS	1	
		RX9015	D1H84704A042	RESISTOR NETWORKS	1	
		RX9016	D1H84704A042	RESISTOR NETWORKS	1	
		RX9017	D1H84704A042	RESISTOR NETWORKS	1	
		TH6001	D4CC11030013	THERMISTOR	1	
		VA9001	D4ED18R00004	VARISTOR	1	
		VA9002	D4ED18R00004	VARISTOR	1	
		VA9004	D4ED18R00004	VARISTOR	1	
		VA9005	D4ED18R00004	VARISTOR	1	
		VA9006	D4ED18R00004	VARISTOR	1	
		VA9007	D4ED18R00004	VARISTOR	1	
		VA9008	D4ED18R00004	VARISTOR	1	
		VA9009	D4ED18R00004	VARISTOR	1	
		VA9010	D4ED18R00004	VARISTOR	1	
		VA9011	D4ED18R00004	VARISTOR	1	
		VA9012	D4ED18R00004	VARISTOR	1	
		VA9013	D4ED18R00004	VARISTOR	1	
		VA9014	D4ED18R00004	VARISTOR	1	
		VA9015	D4ED18R00004	VARISTOR	1	
		X6001	H0J240500048	CRYSTAL OSCILLATOR	1	
		X9101	H0J327200230	CRYSTAL OSCILLATOR	1	