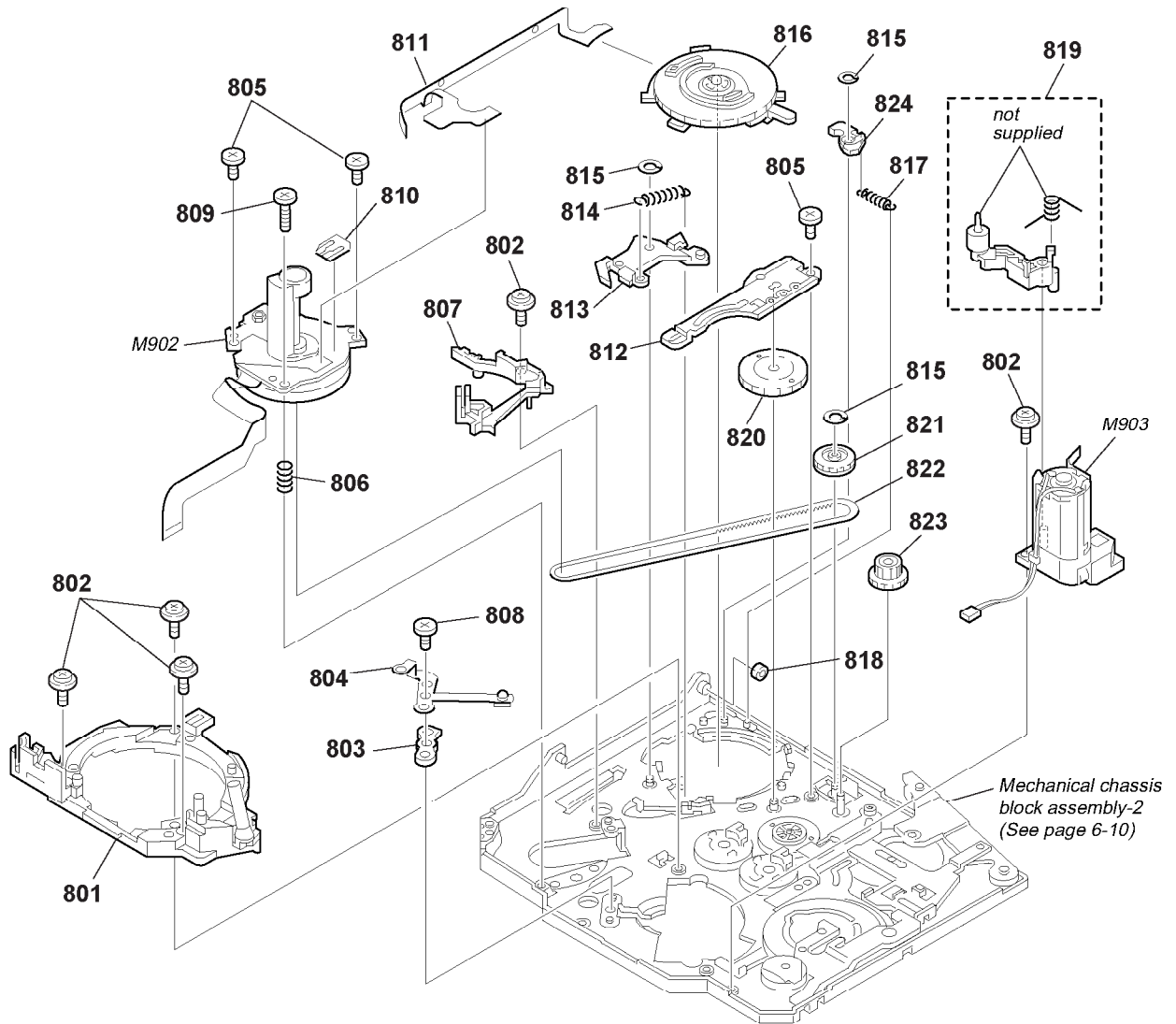


6-1-9. MECHANICAL CHASSIS BLOCK ASSEMBLY-1



Ref. No.	Part No.	Description	Remarks	Ref. No.	Part No.	Description	Remarks
801	A-7096-422-A	BASE ASSY, DRUM		814	3-065-881-01	SPRING, P PRESSURE PLATE	
802	3-947-503-01	SCREW (M1.4)		815	3-065-934-01	HLW CUT 0.98X3X0.25	
803	3-065-928-01	SPACER, GROUND		816	1-786-096-11	SWITCH, ROTALY	
804	3-065-927-01	GROUND, DRUM		817	3-065-898-01	SPRING, EJECT ARM	
805	3-065-932-01	PAN (2 MAIN M1.4X1.6), CAMERA		818	3-065-870-01	ROLLER, LS GUIDE	
806	3-067-154-01	SPRING, CAPSTAN		819	A-7096-421-A	ARM ASSY, HCL	
807	3-065-931-01	RAIL (T2), GUIDE		820	3-065-918-01	GEAR (2), CAM RELAY	
808	X-3947-398-1	SCREW ASSY, M1.7 PW		821	A-7096-419-A	GEAR ASSY, CHANGE	
809	3-065-933-01	PAN (2 MAIN 1.4X4.5), CAMERA		822	3-065-902-01	BELT, TIMING	
810	1-677-049-11	FP-228 FLEXIBLE BOARD (DEW SENSOR)		823	3-065-905-01	GEAR, RELAY	
811	1-680-434-11	FP-299 FLEXIBLE BOARD		824	3-065-882-01	ARM, EJECT	
812	3-065-877-01	PLATE (T), GUIDE LOCK		M902	8-835-701-01	MOTOR, DC SCE13A/C-NP (CAPSTAN)	
813	X-3951-301-1	PLATE ASSY, PINCH PRESSURE		M903	A-7096-420-A	MOTOR ASSY, LD (LOADING)	