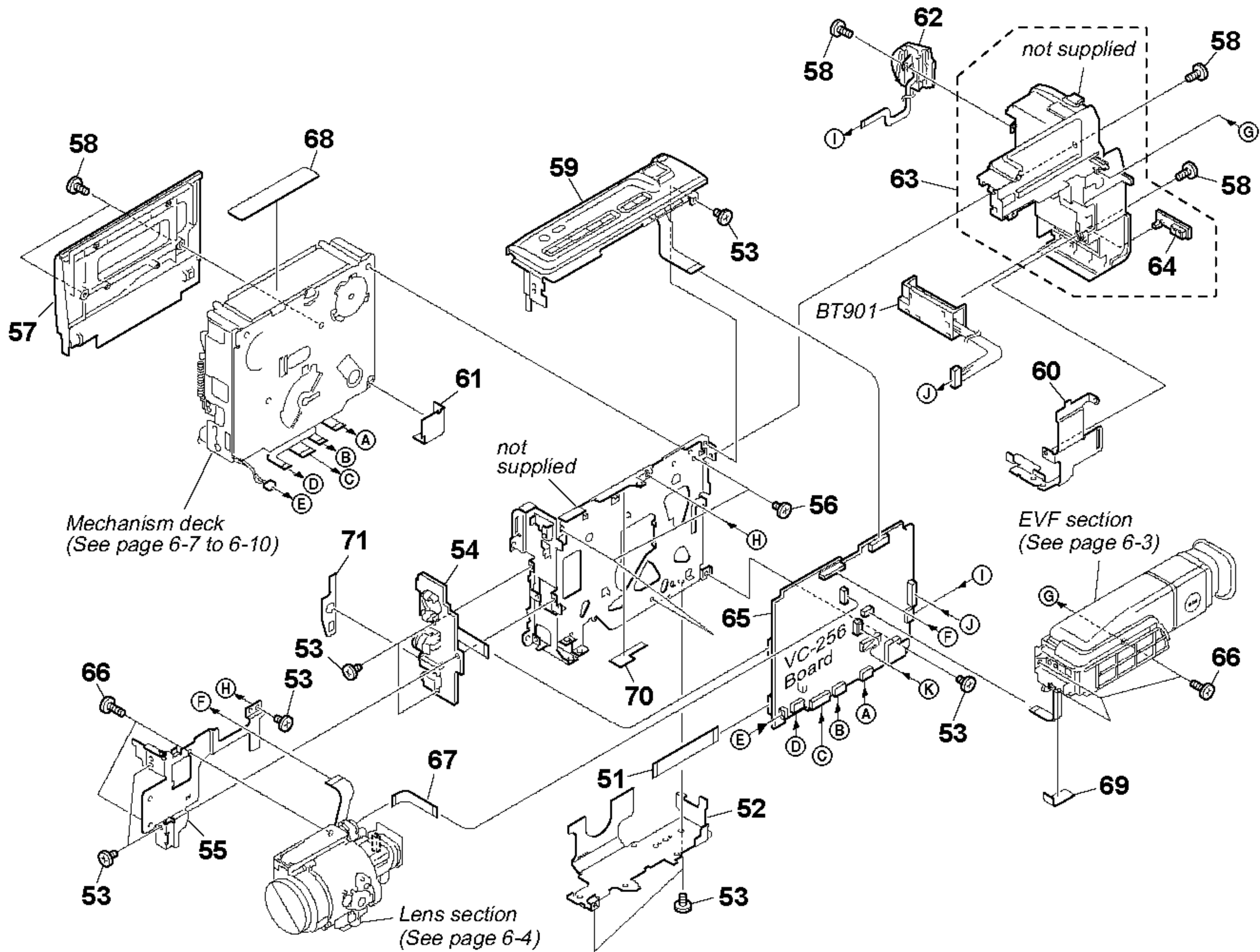


6-1-2. CABINET (L) SECTION



Ref. No.	Part No.	Description	Remarks	Ref. No.	Part No.	Description	Remarks
51	1-680-203-11	FP-263 FLEXIBLE BOARD		62	1-476-424-61	SWITCH BLOCK, CONTROL (SS-1000)(TRV130)	
* 52	3-065-428-01	FRAME B (10), MD		62	1-476-424-71	SWITCH BLOCK, CONTROL (SS-1000) (TRV130E:E,HK,AUS,CN)	
53	3-968-729-51	SCREW (M2), LOCK ACE, P2		63	X-3951-196-1	PANEL (12) ASSY, BATTERY (TRV130:US,CND,E,HK,KR/TRV130E)	
54	1-680-199-11	FP-258 FLEXIBLE BOARD		63	X-3951-471-1	PANEL (B) (12) ASSY, BATTERY (TRV130:BR)	
* 55	3-065-429-01	FRAME (10), LENS		64	3-987-656-01	LID, JACK	
56	4-974-725-01	SCREW (M1.7X2.5), P		65	A-7096-408-A	VC-256 (IB-S) BOARD, COMPLETE (SERVICE)	
57	X-3951-227-1	LID (12) ASSY, CASSETTE		66	3-948-339-61	TAPPING	
58	3-067-347-01	MI SCREW M2 (H)		67	1-680-200-11	FP-259 FLEXIBLE BOARD	
59	1-476-423-11	SWITCH BLOCK, CONTROL (FK-1000) (TRV130E:AEP,UK)		68	3-065-662-01	LABEL, LS CAUTION	
59	1-476-423-21	SWITCH BLOCK, CONTROL (FK-1000) (TRV130/TRV130E:E,HK,AUS,CN)		69	3-941-343-21	TAPE (A)	
60	3-065-421-01	SHEET METAL (LOWER)(12), STRAP		70	3-067-254-01	SHEET (10), ABSORBING	
61	3-066-169-01	SHEET, MD		71	3-066-949-01	CUSHION (12), JACK	
62	1-476-424-41	SWITCH BLOCK, CONTROL (SS-1000) (TRV130E:AEP,UK)		BT901	1-694-384-11	TERMINAL BOARD, BATTERY	