



SECTION 6 REPAIR PARTS LIST

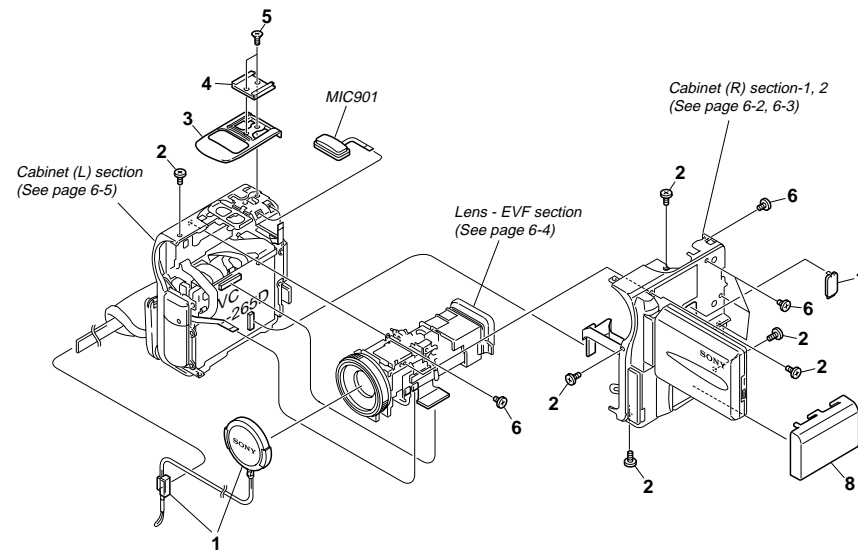
6-1. EXPLODED VIEWS

NOTE:

- -XX, -X mean standardized parts, so they may have some differences from the original one.
- Items marked "*" are not stocked since they are seldom required for routine service. Some delay should be anticipated when ordering these items.
- The mechanical parts with no reference number in the exploded views are not supplied.

The components identified by mark Δ or dotted line with mark Δ are critical for safety. Replace only with part number specified.

6-1-1. OVERALL SECTION



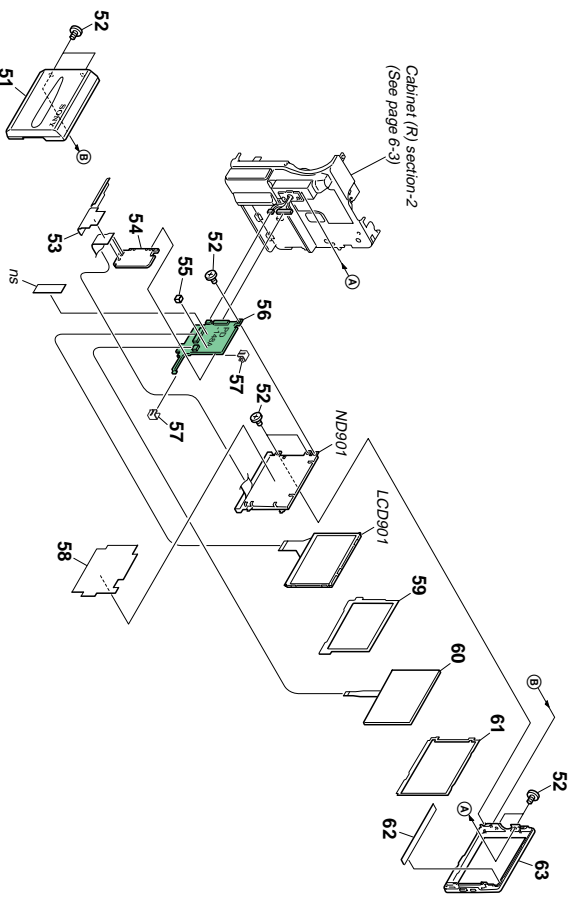
Ref. No.	Part No.	Description
1	X-3952-449-1	CAP ASSY, LENS
2	3-989-735-31	SCREW (M1.7), LOCK ACE, P2
3	3-068-774-01	COVER, MICROPHONE
4	3-067-469-21	SHOE, ACCESSORY
5	3-067-187-11	ACE, PLATE SCREW (M2) LOCK

Ref. No.	Part No.	Description
6	4-974-725-01	SCREW (M1.7), LOCK ACE, P2
7	3-068-784-01	LID, CPC
8	3-057-482-01	COVER, BATTERY
MIC901	1-418-926-21	MICROPHONE BLOCK

DCR-PC8E

6-1-2. CABINET (R) SECTION-1

ns : not supplied

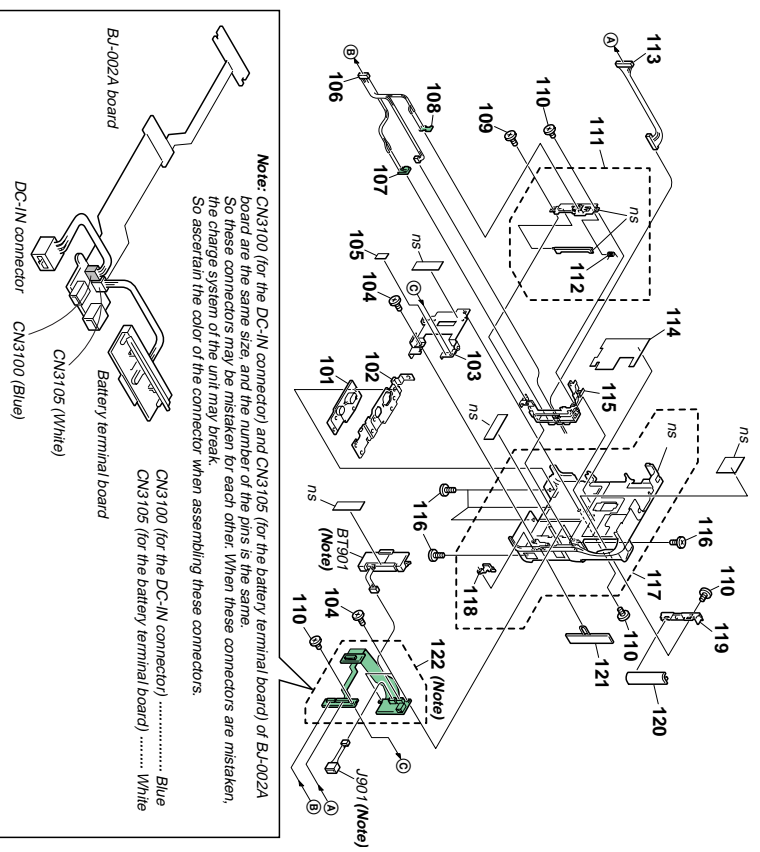


Ref. No.	Part No.	Description
51	X-3952-329-1	CABINET (R) ASSY, LCD
52	4-974-725-01	SCREW (M1.7), LOCK AGE, P2
53	3-068-897-02	SHEET, BL INSULATING
△54	1-476-660-11	INVERTER TRANSFORMER UNIT
55	3-068-791-01	SPACER, PD
56	A-7074-902-A	PD-148A BOARD, COMPLETE
* 57	3-051-232-01	CLIP PCB
58	3-060-704-01	SHEET (N), BL SHIELD

Ref. No.	Part No.	Description
59	3-068-790-01	SPACER, PANEL
60	1-476-593-21	PANEL, (TP-1770)
61	3-068-789-01	SHEET PANEL, PROTECTION
62	3-069-786-01	SHEET (A), LIGHT INTERCEPTION
63	X-3951-885-1	CABINET (L) ASSY, LCD
△ LCD901	8-753-050-88	ACX307AK8-1
△ NCD901	1-517-931-11	TUBE, FLUORESCENT,COLD CATHODE

6-1-3. CABINET (R) SECTION-2

ns : not supplied

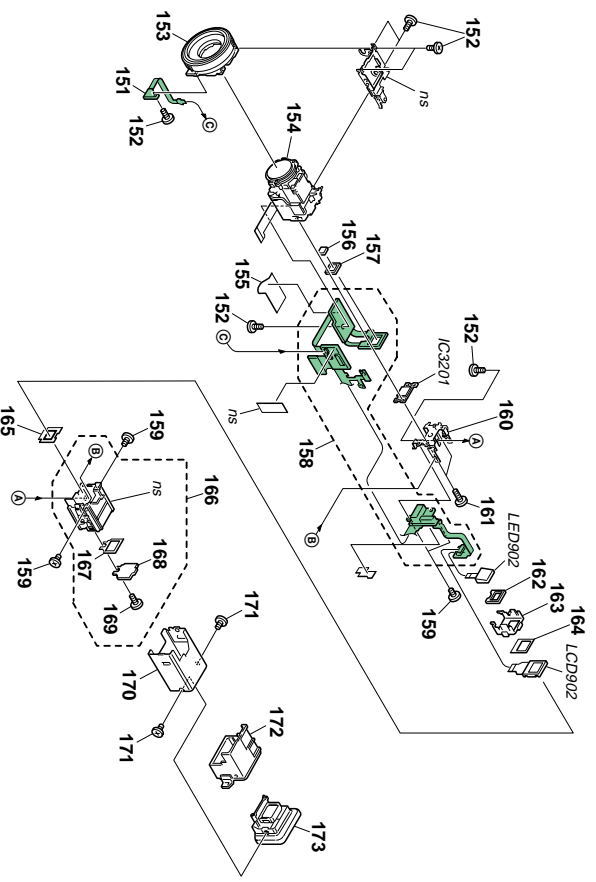


Ref.No.	Part.No.	Description	Ref.No.	Part.No.	Description
101	3-068-788-01	SCREW, TRIPPOD	113	1-961-077-11	HARNISS (PD-113)
102	3-068-787-01	FRAME, BOTTOM	114	3-068-783-01	SHEET, BT BLIND
103	X-3951-709-1	PLATE ASSY, TERMINAL RETAINER	115	X-3951-688-1	HINGE ASSY, LCD
104	3-713-791-01	SCREW (M1.7X4), TAPPING, P2	116	3-989-795-31	SCREW (M1.7), LOCK ACE, P2
105	3-068-896-01	SHEET, BJ INSULATING	117	X-3952-274-1	CABINET (R) ASSY
106	1-961-078-11	HARNISS (PR-063)	118	3-068-793-01	RETAINER, JACK COVER
107	A-7074-873-A	PR-037 BOARD, COMPLETE	119	3-062-106-21	COVER (REAR), HINGE
108	A-7074-872-A	PO-007 BOARD, COMPLETE	120	3-068-792-01	COVER (FRONT), HINGE
109	3-713-791-41	SCREW (M1.7X5), TAPPING, P2	121	X-3952-275-1	COVER (DV), ASSY (S), JACK (SERVICE)
110	4-974-725-01	SCREW (M1.7), LOCK ACE, P2	122	A-7074-903-A	BU-002A BOARD, COMPLETE
111	X-3951-689-1	PLATE ASSY, BLIND	BT901	1-694-796-11	TERMINAL BOARD, BATTERY
* 112	3-065-323-01	SPRING (MM), TORSION	J901	1-815-005-11	CONNECTOR, DC-IN

DCR-PC8E

6-1-4. LENS/EVF SECTION

ns : not supplied



Be sure to read "Precautions upon replacing CCD imager" on page 4-7 when changing the CCD imager.

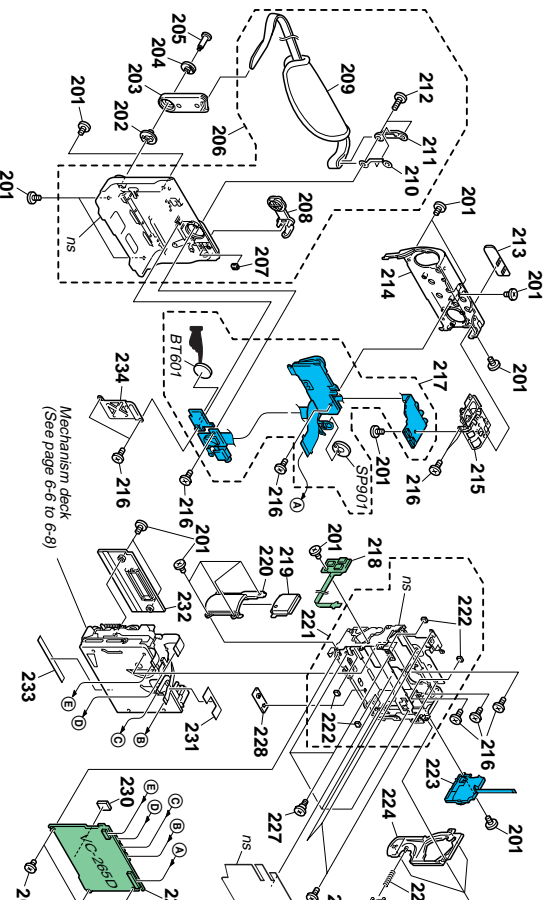
Ref. No.	Part No.	Description
151	A-7074-870-A	MF-325 BOARD, COMPLETE
152	3-713-791-01	SCREW (M1.7X4), TAPPING, P2
153	X-3951-690-1	RING ASSY, MF
154	8-848-748-01	DEVICE, LENS LSV-6500
155	3-068-797-01	SHEET, CF INSULATING
156	1-758-155-21	FILTER BLOCK, OPTICAL
157	3-053-973-01	RUBBER (W), SEAL
158	A-7074-869-A	CF-085 BOARD, COMPLETE
159	4-974-725-01	SCREW (M1.7), LOCK AGE, P2
160	3-068-770-01	FRAME, CD

Ref. No.	Part No.	Description
164	3-068-772-01	CUSHION (L), BL
* 165	3-062-767-01	CUSHION, LCD
166	X-3991-691-1	GUIDE ASSY, VF SLEEVE
167	3-068-805-01	CUSHION, VF
168	3-068-796-01	FILTER, VF
169	3-713-791-11	SCREW (M1.7X5), TAPPING, P2
170	3-068-764-01	SLEEVE, VF
171	3-066-00-21	AGE (M1.7), O PLATE 2 MAIN LOCK
172	3-068-773-01	RING, VF REGULATION
173	X-3952-644-1	LENS ASSY, VF
IC201	A-7031-074-A	CCD BLOCK ASSY (CCD IMAGER)
LED902	8-733-028-47	LCX032AN-S
Δ LED902	1-418-738-11	BLOCK, LIGHT GUIDE PLATE

Note : The components identified by mark Δ or dotted line with mark Δ are critical for safety. Replace only with part number specified.

6-1-5. CABINET (L) SECTION

ns : not supplied



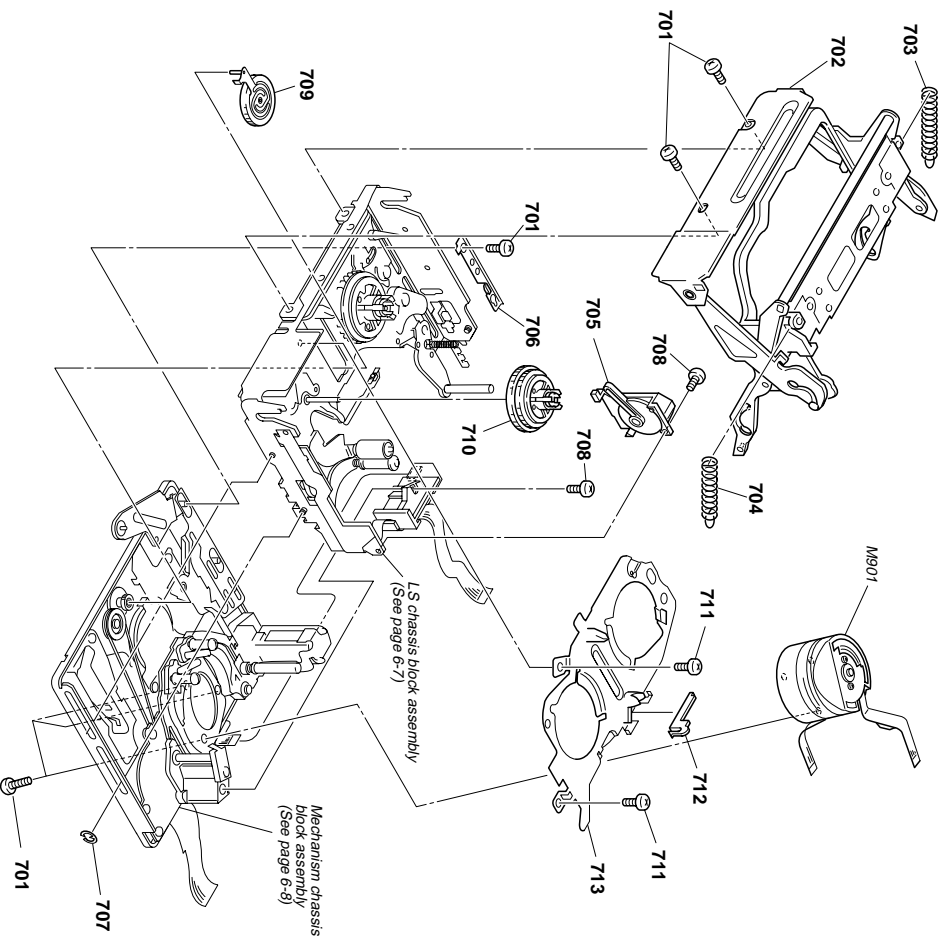
BT601 (Lithium battery) Control switch block (FK-1770) on the mount position. (See page 4-57)

CAUTION :
 Danger of explosion if battery is incorrectly replaced.
 Replace only with the same or equivalent type.

Bel.No.	Part.No.	Description	Bel.No.	Part.No.	Description
201	4-974-725-01	SCREW (M1.7), LOCK AGE. P2	219	X-3951-694-1	WINDOW ASSY, NS
202	3-068-740-01	SLEEVE (REAR)	220	3-068-779-01	COVER, FRONT
203	X-3951-684-1	GRIP ASSY, HOLD	221	X-3951-687-1	FRAME ASSY
204	3-068-739-01	SLEEVE (FRONT)	222	3-975-921-01	SHEET, VIBRATION PROOF
205	3-062-189-02	SCREW(M2.6),SPECIAL HEAD(STEP)	223	1-476-565-21	BLOCK (PS-1770),CONTROL SWITCH
206	X-3952-273-1	CABINET (G) ASSY	224	3-068-777-31	CABINET (REAR)
207	3-068-894-01	RETAINER, JACK COVER (S)	225	3-062-128-01	SPRING, COMPRESSION
208	3-068-909-01	COVER (S), JACK	226	3-068-778-01	LOCK, BATTERY
209	3-062-141-01	BELT GRIP	227	3-062-214-01	SCREW (M1.4X1.5)
210	3-068-900-01	BRACKET, BELT	228	3-068-766-01	KNOB, ELECT
211	3-068-901-01	COVER, BRACKET	229	A-7012-741-A	VC-26SD BOARD, COMPLETE (SERVICE)
212	3-729-076-11	SCREW (+B) (2X4)	230	3-062-210-01	CUSHION, VC
213	X-3951-692-1	COVER (AV) ASSY, JACK	231	3-070-940-01	TAPE (3), DF
214	3-068-767-01	CABINET (L)	232	3-069-722-01	COVER, CASSETTE COMPARTMENT
215	3-068-769-01	FRAME, SHOE	233	3-069-725-01	LABEL, LS
216	3-713-791-01	SCREW (M1.7X4), TAPPING, P2	234	3-062-198-01	RETAINER, MS CONNECTOR
217	A-7096-840-A	SWITCH BLOCK, CONTROL(FK-1770)(SERVICE)	SP901	1-529-857-11	SPEAKER (1.6 CM)
218	A-7074-867-A	NS-013 BOARD, COMPLETE			

DCR-PC8E

6-1-6. CASSETTE COMPARTMENT AND DRUM ASSEMBLY

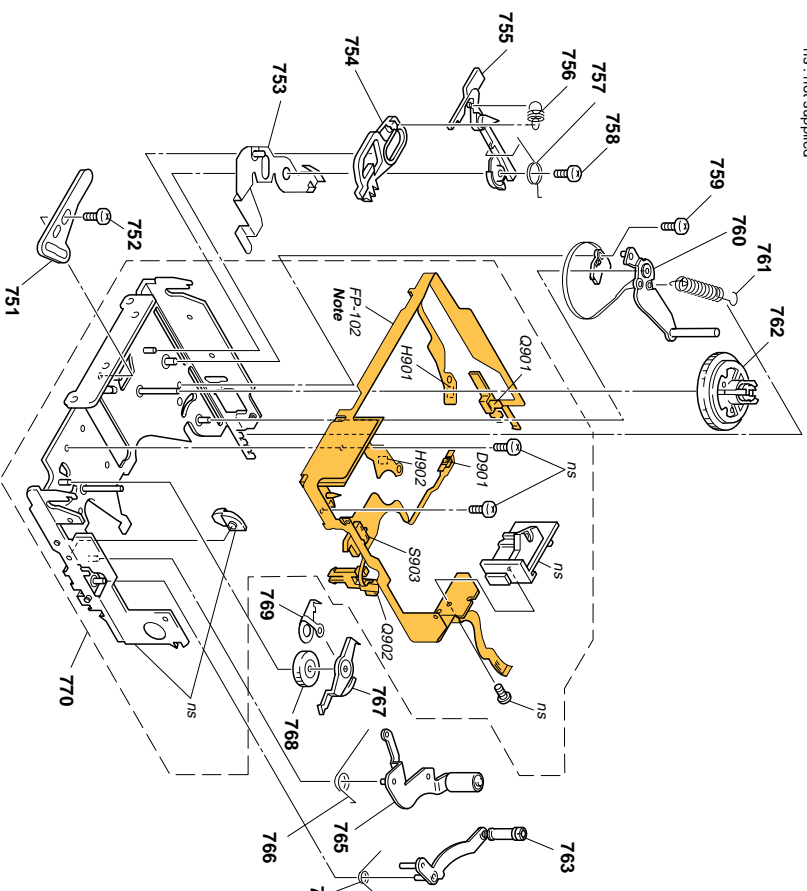


Ref. No.	Part No.	Description
701	3-703-816-14	SCREW (M1.4)
702	X-3952-017-3	CASSETTE COMPARTMENT ASSY
703	3-059-082-01	SPRING, TENSION
704	3-059-208-01	SPRING/CASSETTE COMPARTMENT S)
705	X-3950-370-3	DAMPER ASSY
706	3-059-101-03	RETAINER, LS GUIDE
707	7-624-102-04	STOP RING 1.5, TYPE E

Ref. No.	Part No.	Description
708	3-704-197-21	SCREW (M1.4X2.5), SPECIAL HEAD
709	X-3950-364-1	GEAR ASSY, GOODSMECK
710	X-3950-366-1	TABLE ASSY, T REEL
711	3-075-097-01	SCREW (M1.4X1.4), SPECIAL HEAD
712	3-059-083-01	RETAINER, LED
713	X-3950-361-1	PLATE ASSY, RETAINER
M801	A-7048-340-A	DRUM (DEH-18A-F)

6-1-7. LS CHASSIS BLOCK ASSEMBLY

ns : not supplied



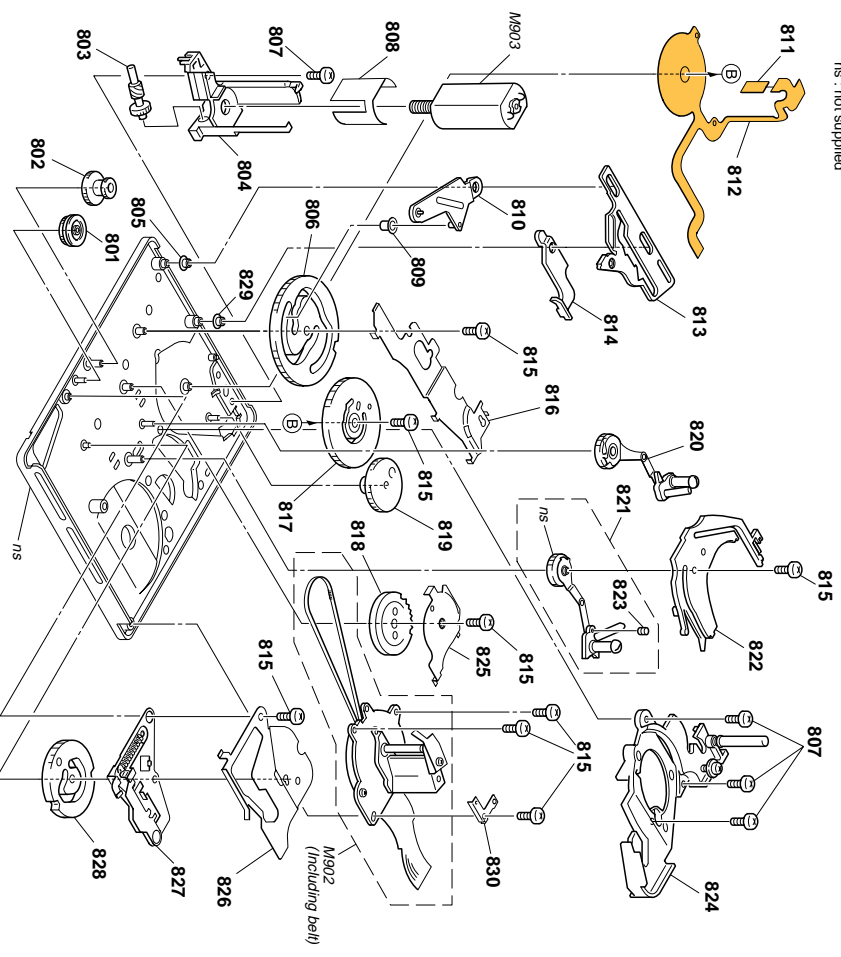
Note: FP-102 is included in the LS sub assy and is attached to chassis by hot-press. Because installation of FP-102 requires a very high accuracy, FP-102 is not supplied as an independent service parts.

Ref.No.	PartNo.	Description	Ref.No.	PartNo.	Description
751	3-059-173-01	PLATE, LS CAM	764	3-059-165-01	SPRING (TG7 RETURN), TORSION
752	3-075-097-01	SCREW (M1.4X1.4), SPECIAL HEAD	765	X-3950-359-1	ARM ASSY, PINCH
753	X-3950-371-1	ARM ASSY, BRAKE (S) DRIVING	766	3-059-161-01	SPRING (PINCH RETURN), TORSION
754	3-059-166-01	BRAKE (S)	767	3-059-170-01	BRAKE (T)
755	3-059-146-01	POSITIONING (S), CASSETTE	768	3-059-171-01	GEAR (T), BRAKE
756	3-059-167-01	SPRING (BRAKE S), TENSION COIL	769	3-059-172-01	SPRING (T), BRAKE
757	3-049-169-01	SPRING (BRAKE S ARM), TORSION	770	A-7094-816-B	LS BLOCK ASSY
758	3-703-316-14	SCREW (M1.4)	D901	8-719-078-71	DIODE LMS7A50 (TAPE LED)
759	3-059-090-01	SCREW (M1.4X2.5), SPECIAL HEAD	H901	8-719-067-74	ELEMENT, HOLE HW-105A-CDE-T (S-REEL)
* 760	X-3950-358-4	TG1 ASSY	H902	8-719-067-74	ELEMENT, HOLE HW-105A-CDE-T (FREE)
761	3-059-156-01	SPRING (TENSION REGULATOR)	Q901	8-729-028-71	TRANSISTOR PVI66.S0 (TAPE END)
762	X-3950-365-2	TABLE ASSY, S REEL	Q902	8-729-028-71	TRANSISTOR PVI66.S0 (TAPE TOP)
763	A-7094-819-A	TG7 BLOCK ASSY	S903	1-572-288-11	SWITCH, PUSH (C.C.DOWN)

DCR-PC8E

6-1-8. MECHANISM CHASSIS BLOCK ASSEMBLY

ns : not supplied



Ref. No.	Part No.	Description
801	3-059-211-01	GEAR, CONVERSION
802	3-059-220-01	GEAR, RELAY
803	3-059-187-01	SHAFT, WORM
804	3-059-186-03	HOLDER, MOTOR
805	3-060-002-01	ROLLER, LS GUIDE
806	3-059-189-01	GEAR (A), CAM
807	3-704-197-21	SCREW (M1.4X2.5), SPECIAL HEAD
808	3-059-225-01	SHIELD, MOTOR
809	3-059-191-01	ROLLER, LS
810	3-059-190-01	ARM, LS
811	1-677-049-11	FP-228 FLEXIBLE BOARD (DEW SENSOR)
812	1-677-084-11	FP-100 FLEXIBLE BOARD
813	3-059-149-01	SLIDER, T61 CAM
814	3-059-148-01	ARM, T61 DRIVING
815	3-703-816-14	SCREW (M1.4)
816	3-059-117-01	COVER (A), GEAR
817	X-3950-367-1	GEAR ASSY, MODE

Ref. No.	Part No.	Description
818	3-059-139-01	GEAR, GL DRIVING
819	3-059-188-01	GEAR, DECELERATION
820	A-7094-818-A	COASTER (S) BLOCK ASSY
821	A-7094-817-A	COASTER (T) BLOCK ASSY
822	3-059-126-01	RAIL, GUIDE
823	3-962-914-01	SCREW (M1.4X2)
824	A-7094-822-A	DRUM BASE BLOCK ASSY
825	3-069-118-01	COVER (B), GEAR
826	3-059-083-01	COVER (C), GEAR
827	X-3950-368-1	ARM ASSY, PINCH DRIVING
828	3-059-192-01	GEAR (B), CAM
829	3-063-355-01	ROLLER (S1), LS GUIDE
830	3-065-202-01	SUPPORT, T67
830	8-835-685-01	MOTOR, DC SCD194-C-NP (INCL. U.DING BELT) (CAPSTAN)
M902		
M903	A-7094-823-A	MOTOR BLOCK ASSY, L (LOADING)

6-2. ELECTRICAL PARTS LIST

NOTE:

- Due to standardization, replacements in the parts list may be different from the parts specified in the diagrams or the components used on the set.
- -XX-, X mean standardized parts, so they may have some difference from the original one.
- Items marked "****" are not stocked since they are seldom required for routine service. Some delay should be anticipated when ordering these items.
- CAPACITORS:
uF: μ F
- COILS
uH: μ H
- RESISTORS
All resistors are in ohms.
METAL: metal-film resistor
METAL OXIDE: Metal Oxide-film resistor
F: nonflammable
- SEMICONDUCTORS
In each case, u, A, for example:
uA...: μ A...; μ PA...; μ PA...
 μ PB...: μ PB...; μ PC...; μ PC...
 μ PD...: μ PD...

Ref. No.	Part No.	Description
	A-707/4-903-A	BJ-002A BOARD, COMPLETE

		< CAPACITOR >
C3100	1-107-819-11	CERAMIC CHIP 0.022uF 10% 16V
		< CONNECTOR >
CN3100	1-691-550-11	PIN, CONNECTOR (1.5MM) (SMD) 3P (DC IN)
CN3102	1-794-276-11	CONNECTOR, SQUARE TYPE 4P (DV, IN/OUT)
CN3105	1-691-550-51	PIN, CONNECTOR (1.5MM) (SMD) 5P
CN3106	1-794-996-21	PIN, CONNECTOR 16P
CN3107	1-794-377-21	PIN, CONNECTOR 8P
CN3108	1-794-403-21	CONNECTOR, BOARD TO BOARD 60P
		< DIODE >
D3100	8-719-077-57	DIODE D73A8 2C(TPL3)
D3101	8-719-056-48	DIODE 1SS388(TPL3)
D3104	8-719-070-93	DIODE TLAU1008(T05, S0V)
D3105	8-719-027-76	DIODE 1SS357-TPH3
D3106	8-719-062-16	DIODE 01ZAK 2(TPL3)
		< FUSE >
Δ F3100	1-576-406-21	FUSE, MICRO (1.4A/32V) (1608)
Δ F3101	1-576-406-21	FUSE, MICRO (1.4A/32V) (1608)
Δ F3102	1-576-406-21	FUSE, MICRO (1.4A/32V) (1608)
Δ F3103	1-576-406-21	FUSE, MICRO (1.4A/32V) (1608)
Δ F3104	1-576-406-21	FUSE, MICRO (1.4A/32V) (1608)
Δ F3105	1-576-406-21	FUSE, MICRO (1.4A/32V) (1608)
		< TRANSISTOR >
Q3100	8-729-047-68	TRANSISTOR SSM3K03FE(TPL3)
Δ Q3101	8-729-051-49	TRANSISTOR TPC83305(T12L)
Q3102	8-729-043-60	TRANSISTOR CPH6102-TL-E
Q3103	8-729-050-91	TRANSISTOR UNRL21300A S0
Q3104	8-729-050-91	TRANSISTOR UNRL21300A S0
		< RESISTOR >
R3100	1-218-990-11	SHORT CHIP 0
R3101	1-218-993-11	RES-CHIP 1K 5% 1/4W
R3102	1-218-986-11	RES-CHIP 470K 5% 1/4W
R3103	1-218-989-11	RES-CHIP 1M 5% 1/4W
R3105	1-216-150-91	RES-CHIP 10 5% 1/8W
R3106	1-218-953-11	RES-CHIP 1K 5% 1/4W
R3107	1-218-961-11	RES-CHIP 4.7K 5% 1/4W
R3108	1-218-961-11	RES-CHIP 4.7K 5% 1/4W
R3111	1-218-990-11	SHORT CHIP 0
R3113	1-218-990-11	SHORT CHIP 0

Ref. No.	Part No.	Description
	A-707/4-869-A	CF-088 BOARD, COMPLETE

		< CAPACITOR >

C3201	1-104-851-11	TANTAL. CHIP 10uF 20% 10V
C3202	1-164-890-11	CERAMIC CHIP 10PF 0.50PF 5V
C3203	1-107-820-11	CERAMIC CHIP 0.1uF
C3204	1-119-751-11	TANTAL. CHIP 22uF 20% 10V
C3454	1-125-777-11	CERAMIC CHIP 0.1uF 10% 10V
C3455	1-125-777-11	CERAMIC CHIP 0.1uF 10% 10V
C3456	1-119-923-81	CERAMIC CHIP 0.047uF 10% 10V
C3457	1-119-923-81	CERAMIC CHIP 0.047uF 10% 10V
C3458	1-119-923-81	CERAMIC CHIP 0.047uF 10% 10V
C3459	1-119-923-81	CERAMIC CHIP 0.047uF 10% 10V
C3460	1-127-692-11	CERAMIC CHIP 10uF 10% 6.3V
C3461	1-127-692-11	CERAMIC CHIP 10uF 10% 6.3V
C3462	1-127-692-11	CERAMIC CHIP 10uF 10% 6.3V
C3463	1-127-692-11	CERAMIC CHIP 10uF 10% 6.3V
C3464	1-110-501-11	CERAMIC CHIP 0.33uF 10% 10V
C3465	1-127-895-91	TANTAL. CHIP 22uF 20% 4V
C3466	1-125-777-11	CERAMIC CHIP 0.1uF 10% 10V
C3467	1-127-895-91	TANTAL. CHIP 22uF 20% 4V
C3469	1-127-895-91	TANTAL. CHIP 22uF 20% 4V
C3702	1-107-820-11	CERAMIC CHIP 0.1uF 10% 10V
		< CONNECTOR >
CN3351	1-691-382-11	CONNECTOR, FCC/FPC (ZIF) 24P
CN3353	1-794-411-21	CONNECTOR, FCC/FPC (LIF) 8P
CN3354	1-794-404-21	CONNECTOR, BOARD TO BOARD 88P
CN3355	1-794-786-21	CONNECTOR, FCC/FPC (LIF) 6P
CN3701	1-691-370-11	CONNECTOR, FCC/FPC 6P
CN3702	1-691-384-21	CONNECTOR, FCC/FPC (ZIF) 18P
		< IC >
IC3201	A-7031-07-4-A	CCD BLOCK ASSY (CCD IMAGER)
IC3451	8-759-489-19	IC μ P0675669R-8JG-E2
IC3701	8-759-581-11	IC NLM2125F (TE2)
		< COIL >
L3201	1-414/57-57-11	INDUCTOR 100uH
L3451	1-414-771-91	INDUCTOR 10uH

When indicating parts by reference number, please include the board name.

The components identified by mark Δ are critical for safety. Replace only with part number specified.

- Abbreviation
EE : East European model
NE : North European model
RU : Russian model

(IC3201 is not included in this compile)

DCR-PC8E

CF-085

FP-102

MF-325

NS-013

PD-148A

Ref.No.	PartNo.	Description
< TRANSISTOR >		
Q3201	8-729-117-73	TRANSISTOR 2SC4178-F3I514-T1
Q3701	8-729-420-20	TRANSISTOR XM4312-T1W
Q3702	8-729-042-26	TRANSISTOR 2SB1462J-OR(K8),SO
Q3703	8-729-427-83	TRANSISTOR XPE501-1(TX),SO

< RESISTOR >

R3201	1-218-957-11	RES-CHIP	22K	5%	1/16W
R3351	1-218-959-11	RES-CHIP	3.3K	5%	1/16W
R3451	1-218-989-11	RES-CHIP	22K	5%	1/16W
R3452	1-218-989-11	RES-CHIP	22K	5%	1/16W
R3453	1-218-989-11	RES-CHIP	22K	5%	1/16W
R3454	1-218-989-11	RES-CHIP	22K	5%	1/16W
R3455	1-218-985-11	RES-CHIP	10K	5%	1/16W
R3456	1-218-985-11	RES-CHIP	10K	5%	1/16W
R3457	1-218-989-11	RES-CHIP	1M	5%	1/16W
R3458	1-218-987-11	RES-CHIP	15K	5%	1/16W
R3459	1-218-989-11	RES-CHIP	1M	5%	1/16W
R3460	1-216-884-11	METAL CHIP	0	5%	1/16W
R3461	1-216-884-11	METAL CHIP	0	5%	1/16W
R3462	1-216-884-11	METAL CHIP	0	5%	1/16W
R3463	1-216-884-11	METAL CHIP	0	5%	1/18W
R3701	1-208-939-11	METAL CHIP	150K	0.5%	1/16W
R3702	1-208-719-11	METAL CHIP	33K	0.5%	1/16W
R3706	1-218-959-11	RES-CHIP	3.3K	5%	1/16W
R3708	1-208-643-11	METAL CHIP	22	0.5%	1/16W
R3709	1-208-643-11	METAL CHIP	22	0.5%	1/18W
R3711	1-218-990-11	SHORT CHIP	0		
R3712	1-218-990-11	SHORT CHIP	0		

< SENSOR >

SE3450	1-803-042-41	SENSOR, ANGULAR VELOCITY (PITCH)
SE3451	1-803-042-31	SENSOR, ANGULAR VELOCITY (YAW)

< THERMISTOR >

TH3701	1-810-811-11	THERMISTOR, NTC (1608)
--------	--------------	------------------------

FP-102 FLEXIBLE BOARD (Not supplied)

< DIODE >

D901	8-719-078-71	DIODE 1N57A SO
< HOLE ELEMENT >		
H901	8-719-067-74	ELEMENT, HOLE HW-105A-CDE-T (S REEL)
H902	8-719-067-74	ELEMENT, HOLE HW-105A-CDE-T (1 REEL)

< TRANSISTOR >

Q901	8-729-028-71	TRANSISTOR PNT66,SO (TAPE END)
Q902	8-729-028-71	TRANSISTOR PNT66,SO (TAPE TOP)

< SWITCH >

S903	1-572-288-11	SWITCH, PUSH (C.C. DOWN)
------	--------------	--------------------------

Ref.No.	PartNo.	Description
A-7074-870-A MF-325 BOARD, COMPLETE *****		
< PHOTO INTERRUPTER >		
PH6201	8-749-016-83	IC GP1S02HCPI
PH6202	8-749-016-83	IC GP1S02HCPI
< RESISTOR >		
RE201	1-218-945-11	RES-CHIP 220 5% 1/16W

A-7074-867-A NS-013 BOARD, COMPLETE

< DIODE >

DB001	8-719-061-82	DIODE TL,SU1002(TPX1,SONY)
DB002	8-719-078-78	DIODE DCZ2805
DB003	8-719-078-78	DIODE DCZ2805

< IC >

IC6001	8-749-013-13	IC, RS-70-TLU
--------	--------------	---------------

A-7074-902-A PD-148A BOARD, COMPLETE

< CAPACITOR >

C2101	1-113-988-11	TANTAL CHIP	88uF	20%	4V
C2102	1-125-777-11	CERAMIC CHIP	0.1uF	10%	10V
C2104	1-165-982-11	TANTAL CHIP	10uF	20%	4V
C2105	1-125-777-11	CERAMIC CHIP	0.1uF	10%	10V
C2107	1-107-826-11	CERAMIC CHIP	0.1uF	10%	16V
C2108	1-164-943-11	CERAMIC CHIP	0.01uF	10%	16V
C2109	1-164-943-11	CERAMIC CHIP	0.01uF	10%	16V
C2110	1-164-943-11	CERAMIC CHIP	0.01uF	10%	16V
C2111	1-164-943-11	CERAMIC CHIP	0.01uF	10%	16V
C2111	1-164-739-11	CERAMIC CHIP	560PF	5%	50V
C2112	1-125-888-11	CERAMIC CHIP	2.2uF	10%	6.3V
C2113	1-164-004-11	CERAMIC CHIP	0.1uF	10%	25V
C2114	1-164-943-11	CERAMIC CHIP	0.01uF	10%	16V
C2115	1-107-687-11	TANTAL CHIP	3.3uF	20%	10V
C2116	1-164-987-11	CERAMIC CHIP	0.001uF	10%	50V
C2117	1-164-872-11	CERAMIC CHIP	82PF	5%	50V
C2118	1-125-888-11	CERAMIC CHIP	2.2uF	10%	6.3V
C2119	1-125-888-11	CERAMIC CHIP	2.2uF	10%	6.3V
C2120	1-125-888-11	CERAMIC CHIP	2.2uF	10%	6.3V
C2123	1-107-687-11	TANTAL CHIP	3.3uF	20%	20V
C2124	1-164-943-11	CERAMIC CHIP	0.01uF	10%	16V
C2125	1-163-021-91	CERAMIC CHIP	0.01uF	10%	50V
C2126	1-115-566-11	CERAMIC CHIP	4.7uF	10%	10V
C2127	1-125-777-11	CERAMIC CHIP	0.1uF	10%	10V
C2128	1-107-725-11	CERAMIC CHIP	0.1uF	10%	16V
C2133	1-109-982-11	CERAMIC CHIP	1uF	10%	10V
C2134	1-131-861-91	TANTAL CHIP	4.7uF	20%	20V
C2181	1-119-751-11	TANTAL CHIP	22uF	20%	16V
C2182	1-164-943-11	CERAMIC CHIP	0.01uF	10%	16V
C2183	1-119-751-11	TANTAL CHIP	22uF	20%	16V
C2184	1-164-943-11	CERAMIC CHIP	0.01uF	10%	16V
C2185	1-104-851-11	TANTAL CHIP	10uF	20%	10V
C2186	1-125-777-11	CERAMIC CHIP	0.1uF	10%	10V

PD-148A

PO-007

PR-037

VC-265D

Ref. No.	Part No.	Description
< CONNECTOR >		
QN2100	1-794-996-21	PN, CONNECTOR 16P
QN2101	1-794-976-21	PN, CONNECTOR 4P
* QN2103	1-778-155-11	CONNECTOR, FFO/FPC (ZIF) 7P
* QN2104	1-778-172-11	CONNECTOR, FFO/FPC (ZIF) 24P
QN2105	1-794-766-21	CONNECTOR, FFO/FPC (LIF) 6P

< DIODE >

D2101	8-719-073-01	DIODE MA1111-(K8),SO
D2102	8-719-084-47	DIODE 1SV290T(PL3)
D2104	8-719-050-42	DIODE R03.3UM-T18
D2181	8-719-059-47	DIODE PG1111R-TR

< IC >

IC2101	8-752-100-95	IC CXA3289AR-T14
IC2103	8-752-407-33	IC CXD3512R-T4

< COIL >

L2101	1-414-755-11	INDUCTOR 22uH
L2102	1-414-754-11	INDUCTOR 10uH
L2103	1-414-754-11	INDUCTOR 10uH
L2104	1-412-949-21	INDUCTOR 6.8uH
L2181	1-412-056-11	INDUCTOR 4.7uH
L2182	1-414-757-11	INDUCTOR 100uH

< TRANSISTOR >

Q2101	8-729-427-74	TRANSISTOR XP4601-TXE
Q2102	8-729-037-74	TRANSISTOR UM9213J-(K8),SO
Q2103	8-729-427-74	TRANSISTOR XP4601-TXE
Q2104	8-729-037-23	TRANSISTOR NDS356AP
Q2109	8-729-042-26	TRANSISTOR 2SR1462J-QR(K8),SO
Q2111	8-729-037-52	TRANSISTOR 2SD2216J-QR(K8),SO
Q2112	8-729-048-77	TRANSISTOR XP4313-(TX),SO
Q2181	8-729-042-72	TRANSISTOR UM9214J-(K8),SO
Q2182	8-729-037-53	TRANSISTOR 2SA1832E-Y6R(TPL3)
Q2183	8-729-042-59	TRANSISTOR UM9112J-(K8),SO

< RESISTOR >

R2110	1-208-933-11	METAL CHIP 82K	0.5%	1/16W
R2111	1-218-985-11	RES-CHIP 470K	5%	1/16W
R2112	1-218-985-11	RES-CHIP 470K	5%	1/16W
R2115	1-218-958-11	RES-CHIP 2.7K	5%	1/16W
R2116	1-218-973-11	RES-CHIP 47K	5%	1/16W
R2117	1-218-975-11	RES-CHIP 68K	5%	1/16W
R2118	1-218-969-11	RES-CHIP 22K	5%	1/16W
R2119	1-218-975-11	RES-CHIP 68K	5%	1/16W
R2122	1-218-989-11	RES-CHIP 1M	5%	1/16W
R2124	1-218-977-11	RES-CHIP 100K	5%	1/16W
R2134	1-208-635-11	RES-CHIP 10	5%	1/16W
R2136	1-208-635-11	RES-CHIP 10	5%	1/16W
R2137	1-208-635-11	RES-CHIP 10	5%	1/16W
R2138	1-218-941-81	RES-CHIP 100	5%	1/16W
R2143	1-218-965-11	RES-CHIP 10K	5%	1/16W
R2144	1-218-985-11	RES-CHIP 470K	5%	1/16W
R2147	1-218-990-11	SHORT CHIP 0	5%	1/16W
R2148	1-218-985-11	RES-CHIP 10K	5%	1/16W
R2157	1-218-989-11	RES-CHIP 1M	5%	1/16W
R2158	1-218-975-11	RES-CHIP 68K	5%	1/16W

Ref. No.	Part No.	Description
R2159	1-218-979-11	RES-CHIP 150K
R2160	1-208-957-11	RES-CHIP 820K
R2166	1-218-965-11	RES-CHIP 10K
R2168	1-218-990-11	SHORT CHIP 0
R2170	1-218-977-11	RES-CHIP 100K
R2181	1-218-961-11	RES-CHIP 4.7K
R2182	1-218-953-11	RES-CHIP 1K
R2183	1-218-941-81	RES-CHIP 100
R2202	1-216-864-11	METAL CHIP 0
R2203	1-218-990-11	SHORT CHIP 0
R2204	1-216-864-11	METAL CHIP 0
R2205	1-218-990-11	SHORT CHIP 0
R2207	1-218-969-11	RES-CHIP 22K

< SWITCH >

S3601	1-771-338-21	SWITCH, PUSH (1 KEY) (PANEL OPEN)
A-7074-873-A PR-037 BOARD, COMPLETE		

S3601 1-771-338-21 SWITCH, PUSH (PANEL REVERSE)		

A-7072741-A VC-265D BOARD, COMPLETE (SERVICE)

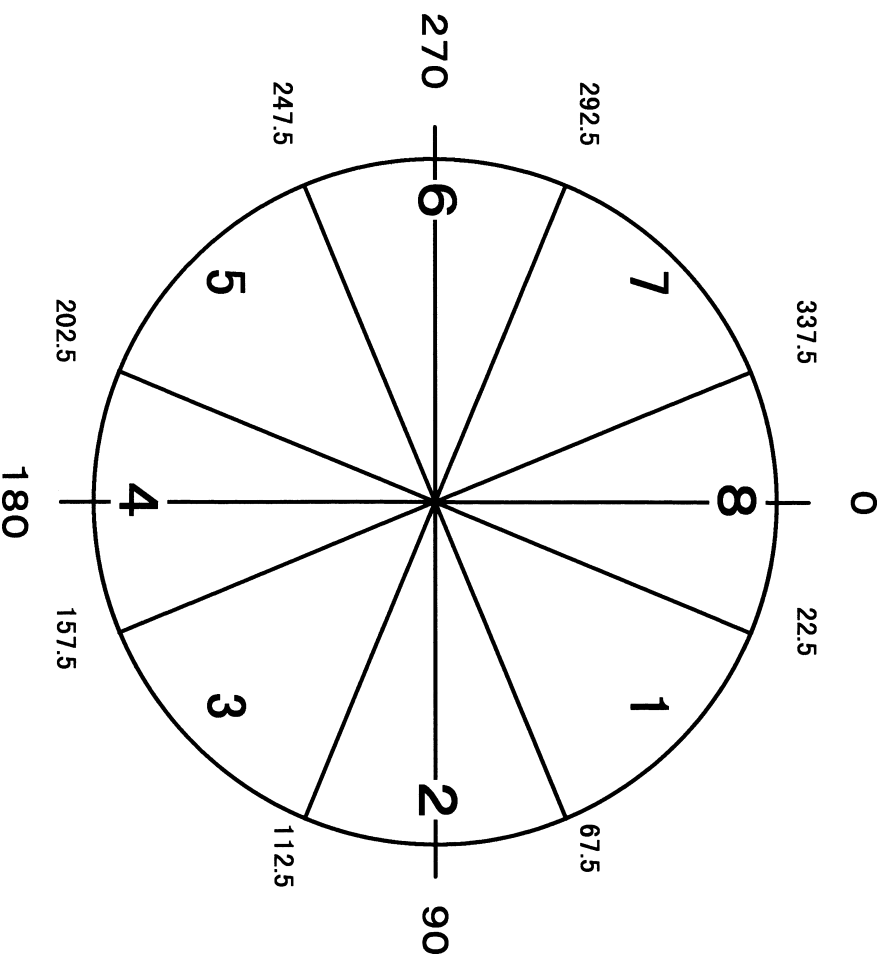
Electrical parts list of the VC-265D board are not shown.
Pages from 6-12 to 6-20 are not shown

Ref. No.	Part No.	Description
		ACCESSORIES

		1-475-141-61 COMMANDER, REMOTE (RMT-814)
		1-475-599-14 ADAPTOR, AC (AC-110A)
		1-573-291-11 CONNECTOR, CONVERSION 21P
		1-769-608-11 CORD, POWER (AEP;E;N;RU)
		1-783-374-11 CORD, POWER (UK)
Δ		1-824-097-11 CORD, CONNECTION (AV CABLE) (1.5m)
Δ		3-073-861-01 CLOTH (TL), CLEANING
		3-742-954-01 LID, BATTERY CASE (FOR RMT-814)
		3-075-064-11 MANUAL, INSTRUCTION (ENGLISH/RUSSIAN)
		3-075-064-21 MANUAL, INSTRUCTION(ITALIAN/GREEK/AEP)
		3-075-064-31 MANUAL, INSTRUCTION
		(SPANISH/PORTUGUESE) (AEP)
		3-075-064-41 MANUAL, INSTRUCTION (FRENCH/GERMAN)
		(AEP)
		3-075-064-51 MANUAL, INSTRUCTION (ENGLISH/DUTCH)
		(AEP)
		X-3952-449-1 CAP ASSY, LENS
		NP-FM30 BATTERY PACK (Not supplied)

Note : The components identified by mark Δ or dotted line with mark Δ are critical for safety.
Replace only with part number specified.

DGR-PC8E
(OPTICAL AXIS FRAME)

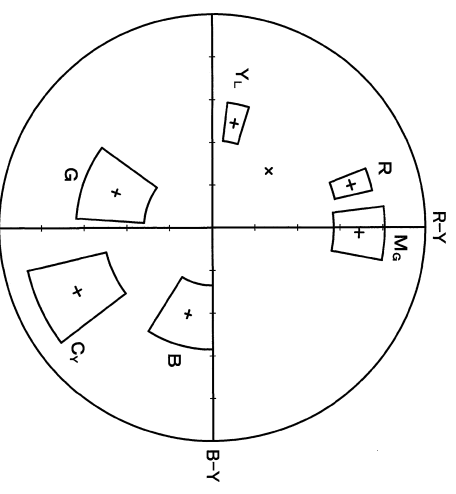


Take a copy of OPTICAL AXIS FRAME with a clear sheet for use.



DCR
(FOR CAMERA COLOR REPRODUCTION ADJUSTMENT)

Take a copy of CAMERA COLOR
REPRODUCTION FRAME with
a clear sheet for use.



DCR-PC8E

9-929-960-31

Sony EMCS Co.
— 140 —

2002D1600-1
©2002,4
Published by DI Customer Center