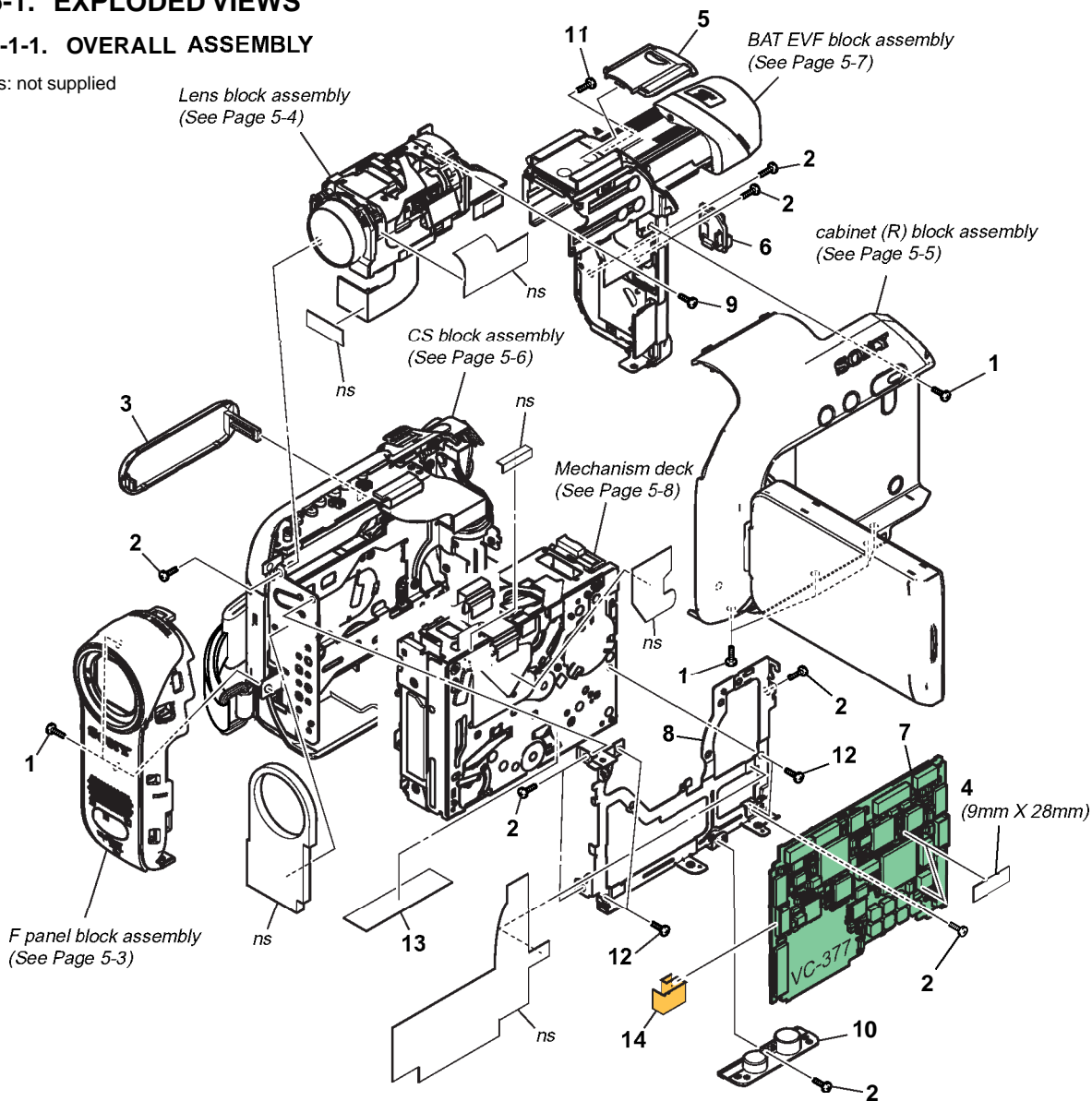


# 5. REPAIR PARTS LIST

## 5-1. EXPLODED VIEWS

### 5-1-1. OVERALL ASSEMBLY

ns: not supplied



**CAUTION :**  
 For the part of 4 : TAPE (A) (3-080-272-01), cut WOVEN (T0.25), FABRIC NON (3-941-343-21) into the desired length and use it.

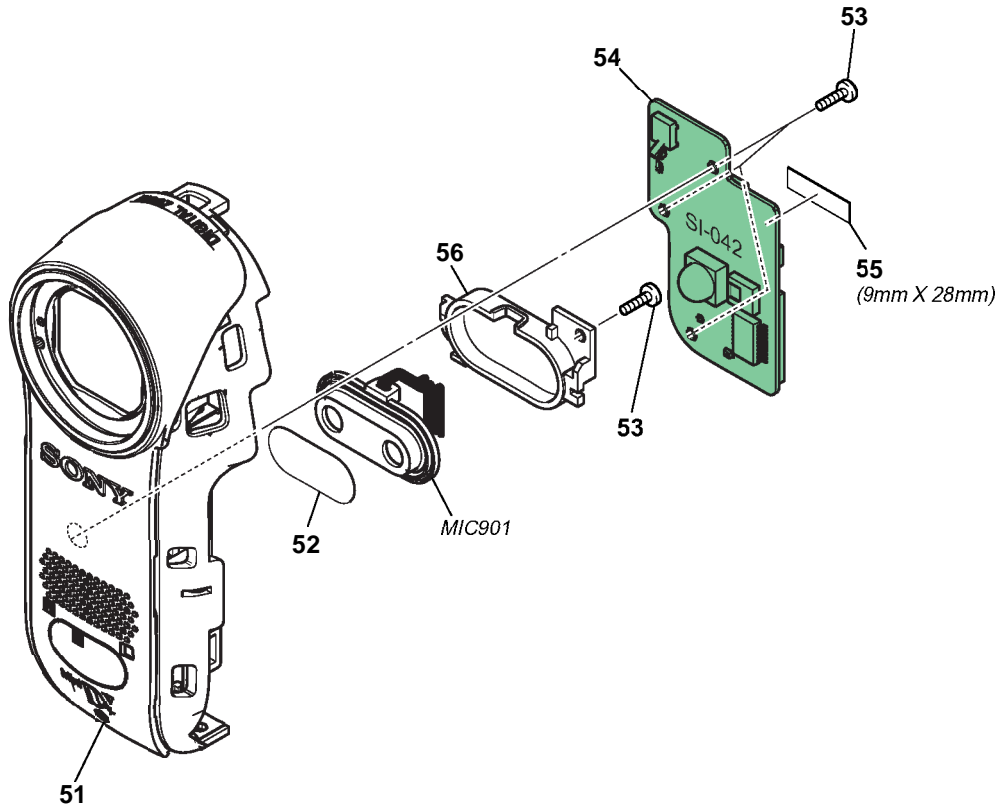
| Ref. No. | Part No.         | Description                                       |
|----------|------------------|---|
| 1        | 3-078-889-31     | SCREW (M1.7)                                      |
| 2        | 3-080-198-11     | SCREW (M1.7), LOCK ACE, P2                        |
| 3        | 2-188-477-01     | COVER, JACK                                       |
| 4        | CAUTION TAPE (A) |   |
| 5        | 2-188-481-01     | COVER (103), SHOE                                 |
| 6        | 2-188-478-01     | LID, CPC  |
| 7        | A-1101-182-A     | VC-376 BOARD, COMPLETE (SERVICE)<br>(HC17E/HC19E) |
| 7        | A-1101-183-A     | VC-376 BOARD, COMPLETE (SERVICE)<br>(HC21/HC21E)  |
| 7        | A-1101-184-A     | VC-376 BOARD, COMPLETE (SERVICE)<br>(HC22E)       |

| Ref. No. | Part No.     | Description  |
|----------|--------------|--|
| 7        | A-1101-185-A | VC-377 BOARD, COMPLETE (SERVICE)<br>(HC32: EXCEPT KR/HC33) |
| 7        | A-1101-190-A | VC-377 BOARD, COMPLETE (SERVICE)<br>(HC32E/HC33E)          |
| 7        | A-1113-387-A | VC-377 BOARD, COMPLETE (SERVICE)<br>(HC32: KR)             |
| 8        | X-2023-772-1 | FRAME ASSY, MD   |
| 9        | 3-080-204-21 | SCREW, TAPPING, P2   |
| 10       | 3-089-520-01 | SCREW  |
| 11       | 3-080-198-31 | SCREW (M1.7), LOCK ACE, P2                                 |
| 12       | 3-062-214-01 | SCREW (M1.4X1.5)   |
| 13       | 3-081-221-01 | LABEL (Z), LS  |
| 14       | 1-829-774-11 | CABLE, FLEXIBLE FLAT (FFC-038)                             |

## 5. REPAIR PARTS LIST

### 5-1-2. F PANEL BLOCK

ns: not supplied



**CAUTION :**  
 For the part of 55 : TAPE (A) (3-080-272-01), cut WOVEN (T0.25), FABRIC NON (3-941-343-21) into the desired length and use it.

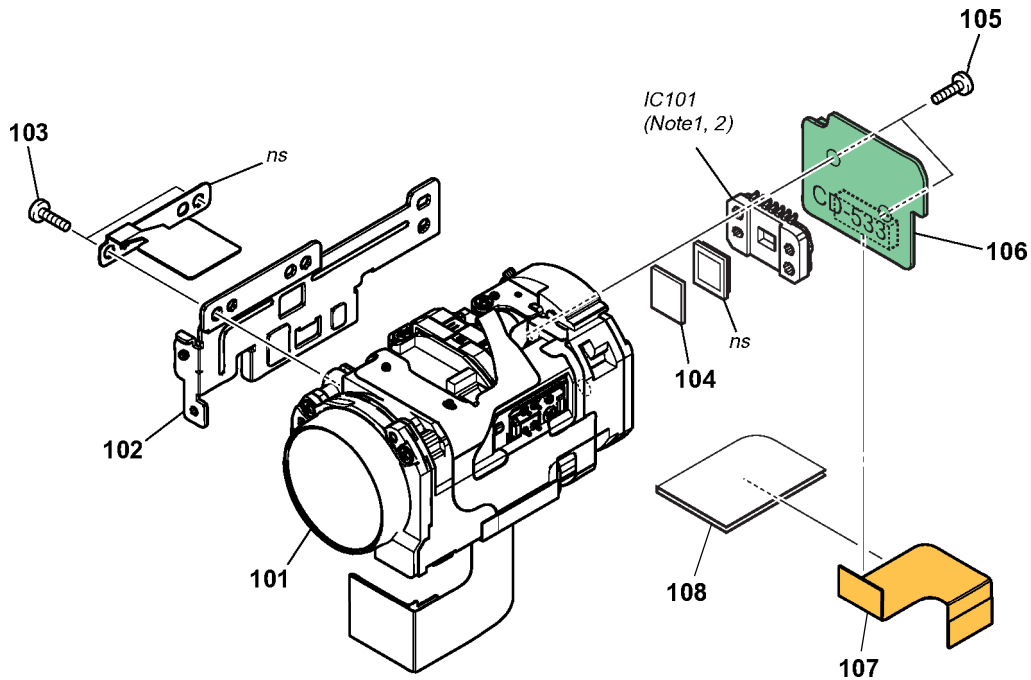
| Ref. No. | Part No.     | Description                           |
|----------|--------------|---------------------------------------|
| 51       | X-2023-770-1 | PANEL ASSY, FRONT (EXCEPT HC17E)      |
| 51       | X-2048-777-1 | PANEL ASSY, FRONT (HC17E)             |
| 52       | 3-089-771-01 | CUSHION, MICROPHONE                   |
| 53       | 3-078-890-11 | SCREW, TAPPING                        |
| 54       | A-1081-844-A | SI-042 BOARD, COMPLETE (EXCEPT HC17E) |

| Ref. No. | Part No.     | Description                       |
|----------|--------------|-----------------------------------|
| 54       | A-1084-828-A | SI-042 BOARD, COMPLETEED) (HC17E) |
| 55       | CAUTION      | TAPE (A)                          |
| 56       | 2-188-425-01 | RETAINER, IR                      |
| MIC901   | 1-542-513-21 | MICROPHONE                        |

## 5. REPAIR PARTS LIST

### 5-1-3. LENS BLOCK

ns: not supplied



Note 1: IC101 is not included in CD-533 complete board.

Note 2: Be sure to read Precautions for Replacement of CCD Imager on page 4-5 when changing the CCD imager.

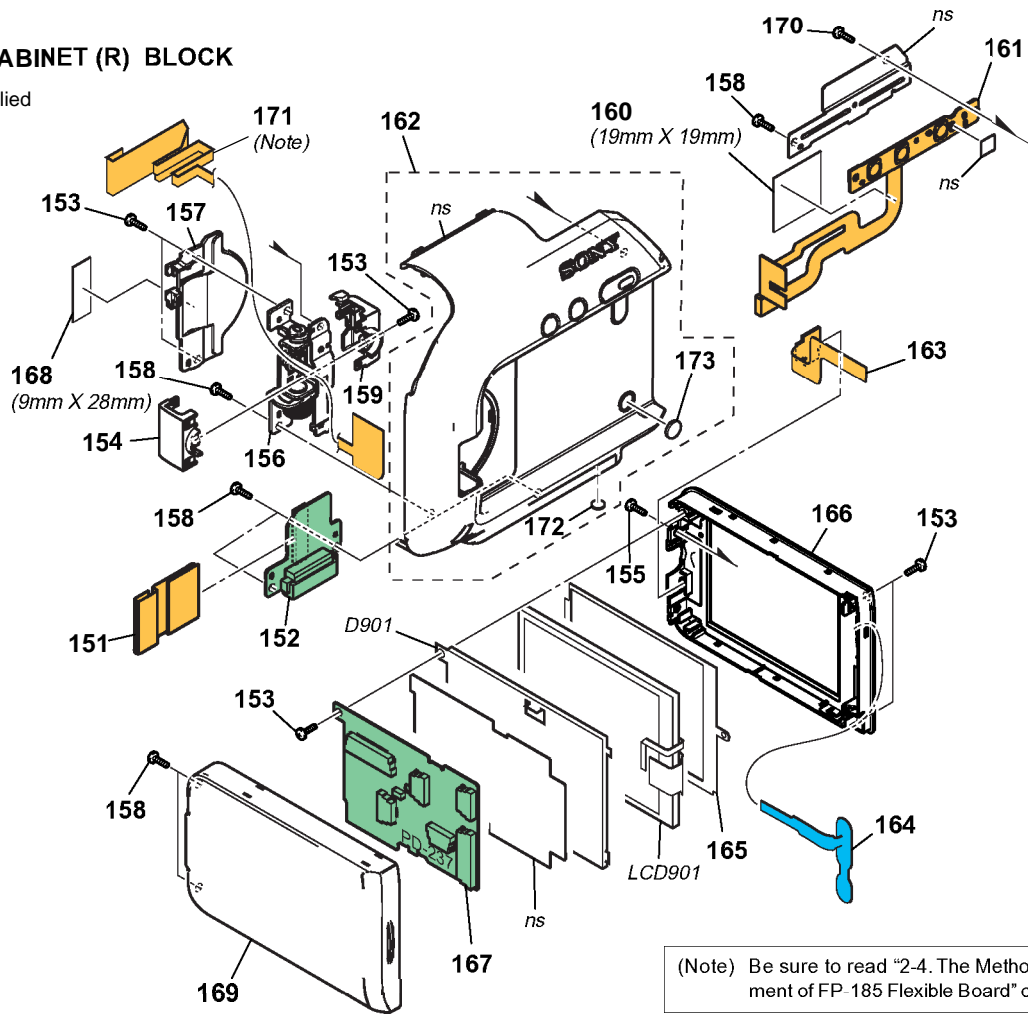
| Ref. No. | Part No.     | Description            |
|----------|--------------|------------------------|
| 101      | 1-788-210-11 | OPTICAL UNIT (EG03)    |
| 102      | 2-188-472-01 | FRAME LENS             |
| 103      | 3-080-204-01 | SCREW, TAPPING, P2     |
| 104      | 1-788-242-11 | OPTICAL FILTER BLOCK   |
| 105      | 3-080-204-21 | SCREW, TAPPING, P2     |
| 106      | A-1081-698-A | CD-533 BOARD, COMPLETE |

| Ref. No. | Part No.     | Description   |
|----------|--------------|---|
| 107      | 1-864-754-11 | FP-178 FLEXIBLE BOARD   |
| 108      | 2-188-482-01 | SHEET, CD SHIELD  |
| IC101    | 8-753-215-47 | ICX440NKF-13 (CCD IMAGER)<br>(HC21/HC32/HC33) (Note1, 2)        |
| IC101    | 8-753-215-49 | ICX441NKF-13 (CCD IMAGER)<br>(EXCEPT HC21/HC32/HC33) (Note1, 2) |

## 5. REPAIR PARTS LIST

### 5-1-4. CABINET (R) BLOCK

ns: not supplied



**CAUTION 1 :**  
For the part of 160 : TAPE (BT) (2-349-851-01), cut WOVEN (T0.25), FABRIC NON (3-076-631-01) into the desired length and use it.

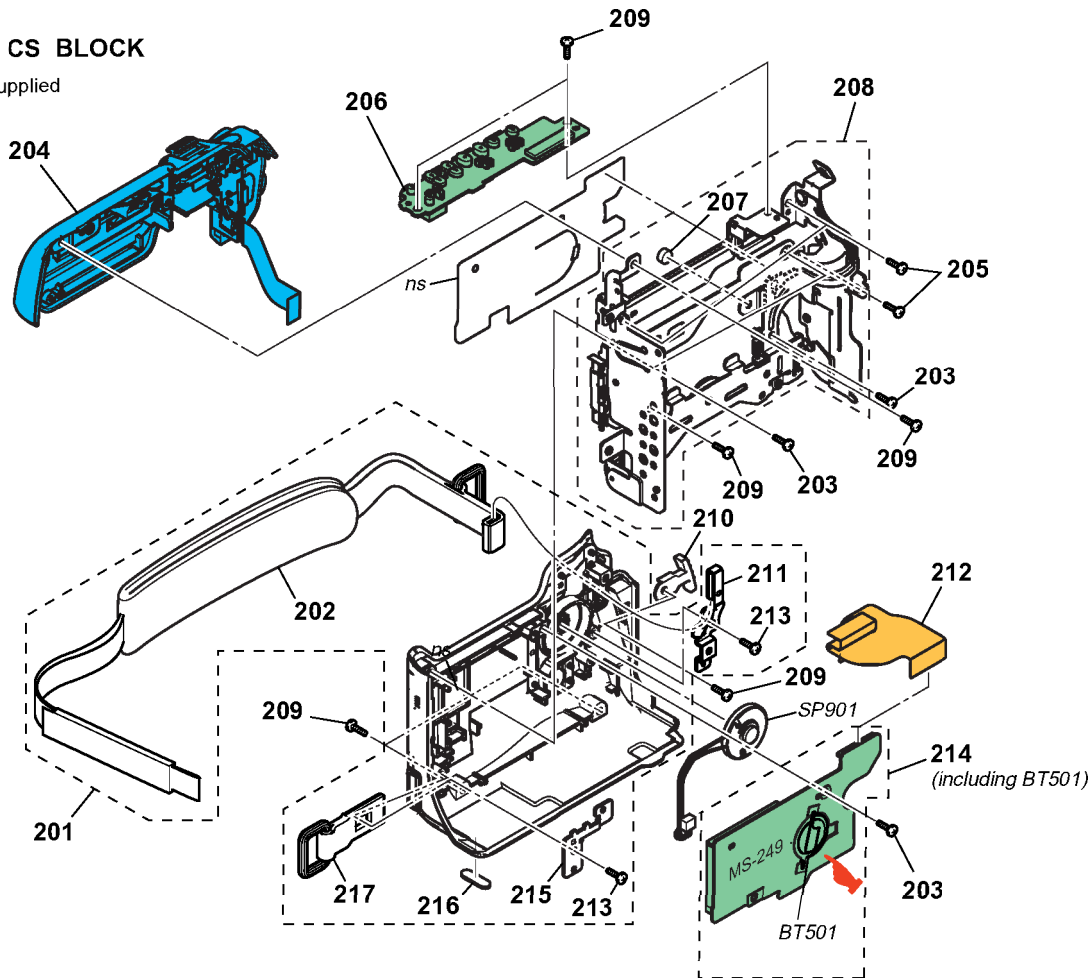
**CAUTION 2 :**  
For the part of 168 : TAPE (A) (3-080-272-01), cut WOVEN (T0.25), FABRIC NON (3-941-343-21) into the desired length and use it.

| Ref. No. | Part No.     | Description   | Ref. No. | Part No.     | Description   |
|----------|--------------|---|----------|--------------|---|
| 151      | 1-864-764-11 | FP-190 FLEXIBLE BOARD<br>(HC22E/HC32/HC32E/HC33/HC33E)  | 167      | A-1081-848-A | PD-237 BOARD, COMPLETE                                    |
| 152      | A-1081-704-A | CR-050 BOARD, COMPLETE<br>(HC22E/HC32/HC32E/HC33/HC33E) | 168      | CAUTION 2    | TAPE (A)  |
| 153      | 3-080-204-21 | SCREW, TAPPING, P2                                      | 169      | 2-188-432-01 | CABINET (C)103, P (HC21)                                  |
| 154      | 2-188-434-01 | COVER (C), HINGE  | 169      | 2-188-432-11 | CABINET (C)103, P (HC17E)                                 |
| 155      | 3-078-889-21 | SCREW (M1.7)  | 169      | 2-188-432-21 | CABINET (C)103, P (HC19E)                                 |
| 156      | X-2023-771-1 | HINGE (103) ASSY  | 169      | 2-188-432-31 | CABINET (C)103, P (HC21E)                                 |
| 157      | 2-188-476-01 | BLIND, HINGE  | 169      | 2-188-432-41 | CABINET (C)103, P (HC32)                                  |
| 158      | 3-078-890-11 | SCREW, TAPPING  | 169      | 2-188-432-51 | CABINET (C)103, P (HC32E)                                 |
| 159      | 2-188-433-01 | COVER (M), HINGE  | 169      | 2-188-432-61 | CABINET (C)103, P (HC33)                                  |
| 160      | CAUTION 1    | TAPE (BT)   | 169      | 2-188-432-71 | CABINET (C)103, P (HC33E)                                 |
| 161      | A-1082-203-A | FP-187 FLEXIBLE BOARD                                   | 169      | 2-188-432-81 | CABINET (C)103, P (HC22E)                                 |
| 162      | X-2023-839-1 | CABINET R ASSY (HC17E/HC19E/HC21/HC21E)                 | 170      | 3-085-397-01 | SCREW   |
| 162      | X-2024-694-1 | CABINET R ASSY<br>(HC22E/HC32/HC32E/HC33/HC33E)         | 171      | 1-864-761-11 | FP-185 FLEXIBLE BOARD                                     |
| 163      | A-1082-042-A | FP-186 FLEXIBLE BOARD                                   | 172      | 3-082-519-01 | FOOT (R), RUBBER  |
| 164      | 1-479-063-21 | KEY BLOCK, CONTROL (SB9000)                             | 173      | 3-089-565-01 | CUSHION (R), PANEL  |
| 165      | 2-188-436-01 | CUSHION (103), PANEL                                    | D901     | 1-479-067-11 | BLOCK, LIGHT GUIDE PLATE (2.5)                            |
| 166      | X-2024-273-1 | CABINET (M) (103) ASSY, P                               | LCD901   | A-1090-678-A | (TP) BLOCK ASSY (2.5AUMG) (HC32)                          |
|          |              |   | LCD901   | A-1090-679-A | (TP) BLOCK ASSY (2.5STFU)<br>(HC17E/HC19E/HC21E/HC22E)    |
|          |              |   | LCD901   | A-1090-680-A | (TP) BLOCK ASSY (2.5STMG)<br>(HC21/HC32/HC32E/HC33/HC33E) |

## 5. REPAIR PARTS LIST

### 5-1-5. CS BLOCK

ns: not supplied



**BT501(BATTERY, LITHIUM SECONDARY)**  
Board on the mount position (See page 4-96).

**CAUTION**

Danger of explosion if battery is incorrectly replaced.  
Replace only with the same or equivalent type.

|   |   |
|---|---|
| <p>The components identified by mark <math>\Delta</math> or dotted line with mark <math>\Delta</math> are critical for safety. Replace only with part number specified.</p> | <p>Les composants identifiés par une marque <math>\Delta</math> sont critiques pour la sécurité. Ne les remplacer que par une pièce portant le numéro spécifié.</p> |
|---|---|

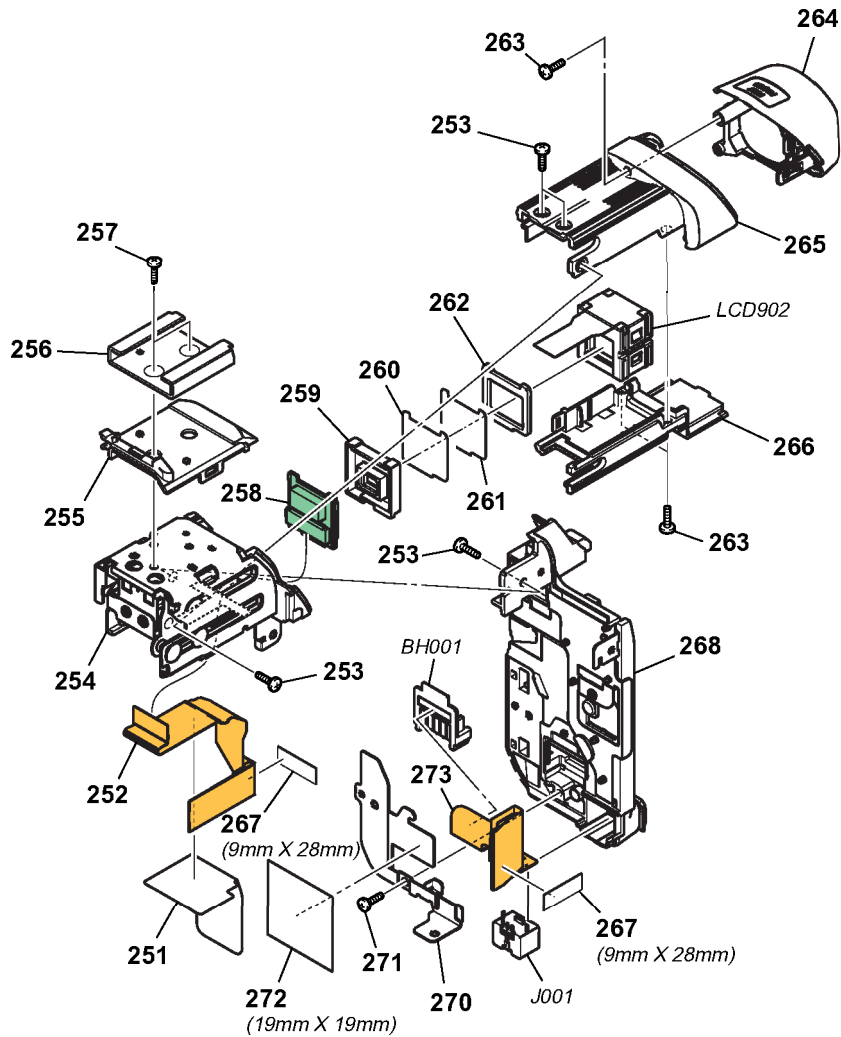
| Ref. No. | Part No.     | Description   |
|----------|--------------|---|
| 201      | X-2023-774-1 | CABINET (G) ASSY<br>(HC17E/HC19E/HC21/HC21E/HC22E)      |
| 201      | X-2024-840-1 | CABINET (G) ASSY (HC32/HC32E/HC33/HC33E)                |
| 202      | 2-583-631-01 | BELT, GRIP  |
| 203      | 3-078-890-11 | SCREW, TAPPING  |
| 204      | 1-478-982-11 | KEY BLOCK, CONTROL (SS10300)<br>(HC17E/HC19E)           |
| 204      | 1-478-982-21 | KEY BLOCK, CONTROL (SS10300)<br>(HC21/HC21E)            |
| 204      | 1-478-982-31 | KEY BLOCK, CONTROL (SS10300) (HC22E)                    |
| 204      | 1-478-982-41 | KEY BLOCK, CONTROL (SS10300)<br>(HC32/HC32E/HC33/HC33E) |
| 205      | 3-080-204-01 | SCREW, TAPPING, P2                                      |
| 206      | A-1081-840-A | JK-278 BOARD, COMPLETE<br>(HC17E/HC19E/HC21/HC21E)      |
| 206      | A-1081-841-A | JK-278 BOARD, COMPLETE<br>(HC22E/HC32/HC32E/HC33/HC33E) |

| Ref. No.       | Part No.     | Description  |
|----------------|--------------|--|
| 207            | 3-959-978-02 | CUSHION, PANEL   |
| 208            | X-2023-773-1 | FRAME ASSY, CS   |
| 209            | 3-080-198-11 | SCREW (M1.7), LOCK ACE, P2                               |
| 210            | 2-188-450-01 | KNOB, EJECT  |
| 211            | 2-188-455-01 | SHEET METAL (REAR), GRIP BELT                            |
| 212            | 1-864-758-11 | FP-182 FLEXIBLE BOARD                                    |
| 213            | 3-080-204-11 | SCREW, TAPPING, P2                                       |
| 214            | A-1081-842-A | MS-249 BOARD, COMPLETE<br>(HC17E/HC19E/HC21/HC21E/HC22E) |
| 214            | A-1081-843-A | MS-249 BOARD, COMPLETE<br>(HC32/HC32E/HC33/HC33E)        |
| 215            | 2-188-453-01 | SHEET METAL (FRONT), GRIP BELT                           |
| 216            | 2-188-514-01 | FOOT (G), RUBBER   |
| 217            | 2-583-616-01 | BELT (FRONT), GRIP                                       |
| $\Delta$ BT501 | 1-756-075-21 | BATTERY, LITHIUM (SECONDARY)                             |
| SP901          | 1-825-260-23 | LOUD SPEAKER (1.6cm)                                     |

## 5. REPAIR PARTS LIST

### 5-1-6. BAT EVF BLOCK

ns: not supplied



**CAUTION 1 :**  
For the part of 267 : TAPE (A) (3-080-272-01), cut WOVEN (T0.25), FABRIC NON (3-941-343-21) into the desired length and use it.

**CAUTION 2 :**  
For the part of 272 : TAPE (BT) (2-349-851-01), cut WOVEN (T0.25), FABRIC NON (3-076-631-01) into the desired length and use it.

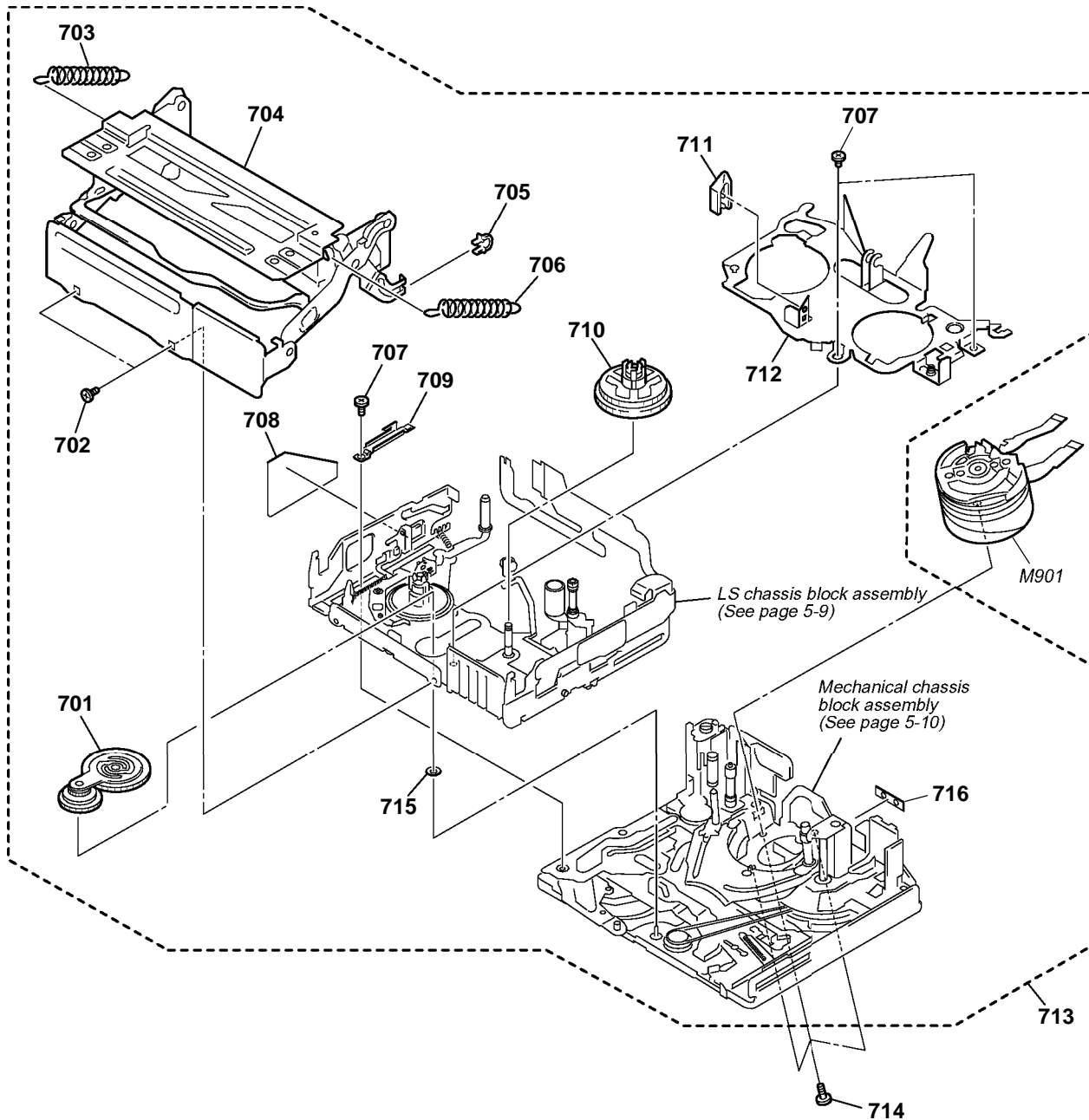
| Ref. No. | Part No.     | Description              |
|----------|--------------|--------------------------|
| 251      | 2-188-512-01 | SHEET, VF FLEXIBLE FIXED |
| 252      | 1-864-757-11 | FP-181 FLEXIBLE BOARD    |
| 253      | 3-078-889-21 | SCREW (M1.7)             |
| 254      | X-2023-650-1 | VF SLIDE ASSY            |
| 255      | 3-067-469-11 | SHOE, ACCESSORY          |
| 256      | 2-188-479-01 | BASE (103), SHOE         |
| 257      | 2-188-485-01 | O PLATE BIS M1.7         |
| 258      | A-1081-845-A | LB-109 BOARD, COMPLETE   |
| 259      | 3-089-415-01 | GUIDE, LAMP              |
| 260      | 3-089-417-01 | ILLUMINATOR              |
| 261      | 3-089-416-01 | SHEET, PRISM             |
| 262      | 3-089-419-01 | CUSHION, LCD             |
| 263      | 3-080-204-21 | SCREW, TAPPING, P2       |

| Ref. No. | Part No.     | Description                 |
|----------|--------------|-----------------------------|
| 264      | X-2023-648-1 | EYE CUP ASSY                |
| 265      | X-2023-647-1 | CABINET UPPER ASSY VF       |
| 266      | 2-188-511-01 | CABINET LOWER, VF           |
| 267      | CAUTION 1    | TAPE (A)                    |
| 268      | X-2048-504-1 | BT PANEL ASSY               |
| 270      | 2-188-500-01 | PLATE, BT TERMINAL RETAINER |
| 271      | 3-080-204-01 | SCREW, TAPPING, P2          |
| 272      | CAUTION 2    | TAPE (BT)                   |
| 273      | 1-864-756-11 | FP-180 FLEXIBLE BOARD       |
| BH001    | 1-780-064-21 | BATTERY TERMINAL BOARD      |
| J001     | 1-815-792-11 | CONNECTOR, DC-IN (7.2V)     |
| LCD902   | 8-753-208-84 | LCX059ALA-1 (EXCEPT HC33E)  |
| LCD902   | 8-753-234-60 | LCX059ZLA-1 (HC33E)         |

## 5. REPAIR PARTS LIST

### 5-1-7. MECHANISM DECK

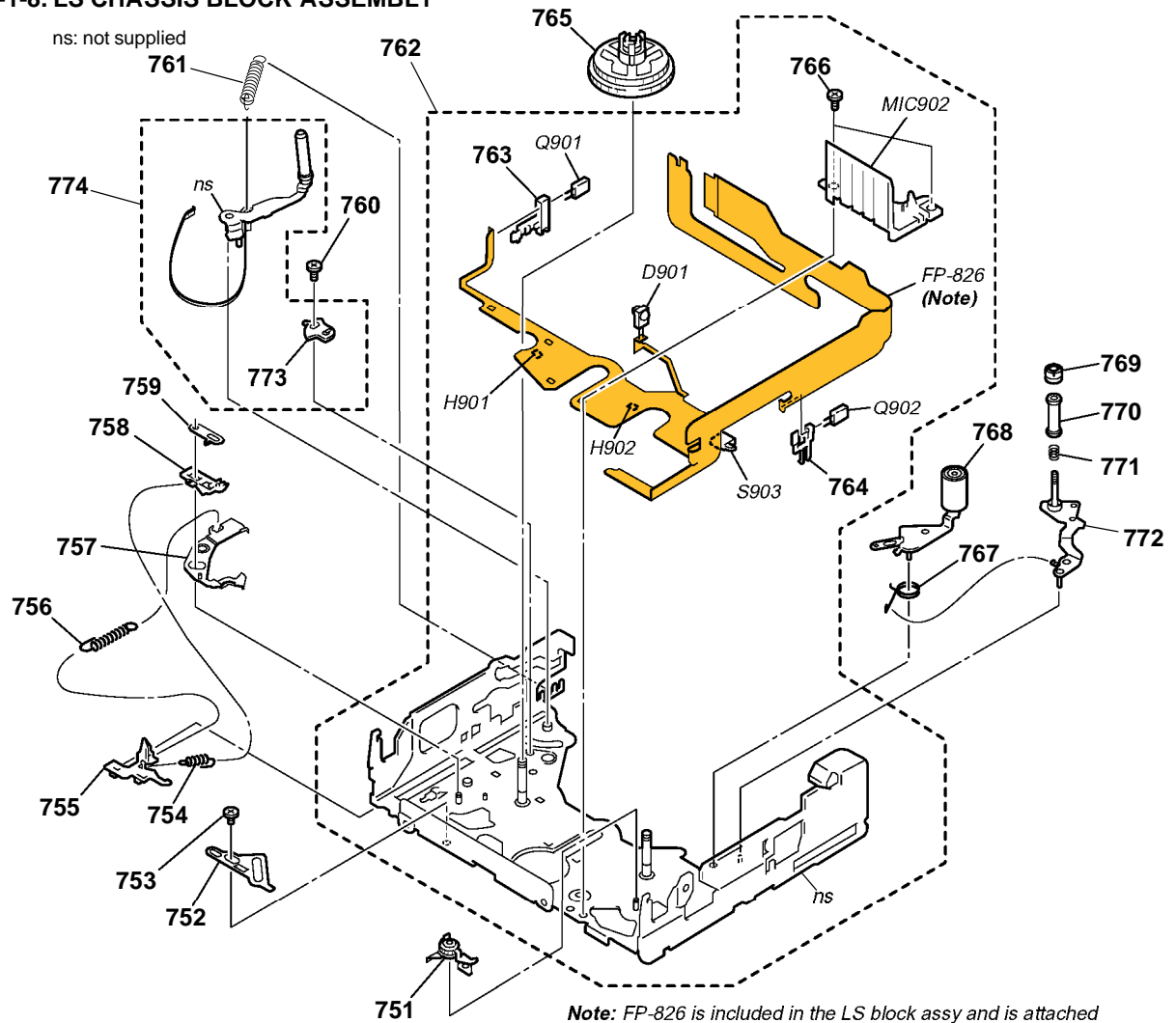
ns: not supplied



| Ref. No. | Part No.     | Description                    | Ref. No. | Part No.     | Description                |
|----------|--------------|--------------------------------|----------|--------------|----------------------------|
| 701      | X-3952-938-6 | GEAR ASSY, GOOSENECK           | 710      | X-3952-937-1 | TABLE ASSY, T REEL         |
| 702      | 3-075-097-11 | SCREW (M1.4X1.4), SPECIAL HEAD | 711      | 3-079-366-01 | RELEASE, REEL LOCK         |
| 703      | 3-079-206-02 | SPRING (POP UP S), TXTENSION   | 712      | X-3953-257-1 | PLATE ASSY, RETAINER       |
| 704      | X-2024-802-1 | COMPARTMENT ASSY, CASSETTE     | 713      | A-1082-424-A | MD (Z210) SUB ASSY         |
| 705      | 3-079-367-01 | DAMPER, CASSETTE COMPARTMENT   | 714      | 3-079-741-02 | SCREW, DRUM FIXING         |
| 706      | 3-079-215-02 | SPRING (POP UP T), EXTENSION   | 715      | 3-748-682-01 | WASHER, T                  |
| 707      | 3-085-330-01 | SCREW, SPECIAL                 | 716      | 3-087-881-01 | SHEET, ADHESIVE, FLEXIBLE  |
| 708      | 3-080-545-01 | COVER, SENSOR S                | M901     | A-7048-994-A | DRUM (DEH-30B-R) (SERVICE) |
| 709      | 3-079-364-01 | RETAINER, LS GUIDE             |          |              |                            |

## 5. REPAIR PARTS LIST

### 5-1-8. LS CHASSIS BLOCK ASSEMBLY



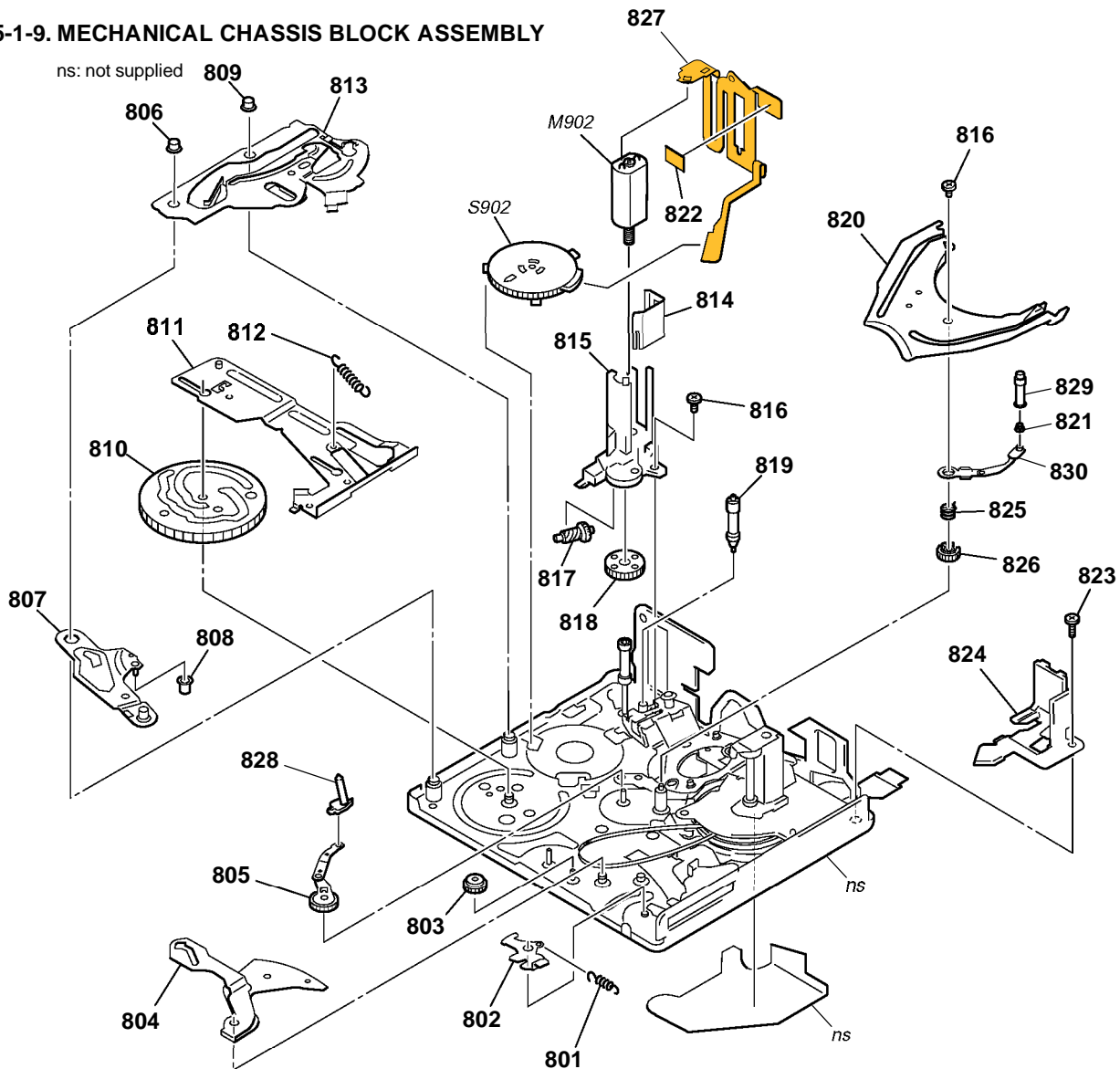
**Note:** FP-826 is included in the LS block assy and is attached to chassis by hot-press.  
Because installation of FP-826 requires a very high accuracy, FP-826 is not supplied as an independent service parts.

| Ref. No. | Part No.     | Description                      | Ref. No. | Part No.     | Description                            |
|----------|--------------|----------------------------------|----------|--------------|--|
| 751      | A-7095-402-B | BRAKE (T) BLOCK ASSY (S)         | 767      | 3-079-243-02 | SPRING (PINCH RETURN), TORSION         |
| 752      | 3-079-241-01 | PLATE, LS CAM                    | 768      | X-3952-934-1 | ARM ASSY, PINCH                        |
| 753      | 3-075-097-11 | SCREW (M1.4X1.4), SPECIAL HEAD   | 769      | 3-052-062-02 | NUT, TG7                               |
| 754      | 3-079-246-01 | SPRING (RELEASE RACK), EXTENSION | 770      | 3-079-219-02 | TG7                                    |
| 755      | 3-079-248-01 | POSITIONING (S), CASSETTE        | 771      | 3-081-591-01 | SPRING, COMPRESSION (TG7)              |
| 756      | 3-079-244-01 | SPRING (ULE), EXTENSION          | 772      | X-3952-935-3 | ARM ASSY, TG7                          |
| 757      | X-3952-932-1 | BRAKE ASSY, ULE                  | 773      | 3-079-237-01 | ADJUSTOR, BAND                         |
| 758      | 3-079-245-01 | RACK (S), RELEASE                | 774      | A-7095-403-B | TG2 ARM BLOCK ASSY                     |
| 759      | 3-079-247-01 | BRAKE (S)                        | D901     | 6-500-652-01 | DIODE GL453SE0000F (TAPE LED)          |
| 760      | 3-059-090-11 | SCREW (M1.4X2.5), SPECIAL HEAD   | H901     | 8-719-067-74 | ELEMENT, HOLE HW-105A-CDE-T (S REEL)   |
| 761      | 3-079-242-01 | SPRING, TENSION                  | H902     | 8-719-067-74 | ELEMENT, HOLE HW-105A-CDE-T (T REEL)   |
| 762      | A-7095-951-A | LS BLOCK ASSY                    | MIC902   | 1-817-175-12 | PIN, CONNECTOR (WITH DETECTION SWITCH) |
| 763      | 3-079-267-01 | HOLDER (S), SENSOR               | Q901     | 6-550-672-01 | TRANSISTOR PT4850FJE00F (TAPE END)     |
| 764      | 3-079-268-01 | HOLDER (T), SENSOR               | Q902     | 6-550-672-01 | TRANSISTOR PT4850FJE00F (TAPE TOP)     |
| 765      | X-3952-936-2 | TABLE ASSY, S REEL               | S903     | 1-529-566-51 | SWITCH, PUSH (1 KEY) (C.C. DOWN)       |
| 766      | 3-085-330-01 | SCREW, SPECIAL                   |          |              |  |



## 5. REPAIR PARTS LIST

### 5-1-9. MECHANICAL CHASSIS BLOCK ASSEMBLY



| Ref. No. | Part No.     | Description               | Ref. No. | Part No.     | Description                            |
|----------|--------------|---------------------------|----------|--------------|--|
| 801      | 3-079-314-01 | SPRING (EJ), EXTENSION    | 817      | 3-079-308-01 | SHAFT, WORM                            |
| 802      | 3-079-327-01 | ARM, EJ                   | 818      | 3-079-309-01 | GEAR, DECELERATION                     |
| 803      | 3-079-323-01 | GEAR, CONVERSION          | 819      | X-3952-942-2 | ROLLER ASSY, TG3                       |
| 804      | 3-079-324-01 | ARM, GL DRIVING           | 820      | 3-079-325-01 | RAIL, GUIDE                            |
| 805      | X-3952-928-1 | GL (S) ASSY               | 821      | 3-079-295-02 | SPRING, TG5                            |
| 806      | 3-079-315-01 | ROLLER (S1), LS GUIDE     | 822      | 1-677-049-11 | FP-228 FLEXIBLE BOARD (DEW SENSOR)     |
| 807      | X-3952-925-1 | ARM ASSY, LS              | 823      | 3-079-328-01 | SCREW (M1.4), SPECIAL HEAD             |
| 808      | 3-079-320-01 | ROLLER, LS                | 824      | 3-079-326-02 | SUPPORT, TG7                           |
| 809      | 3-079-316-01 | ROLLER (S2), LS GUIDE     | 825      | 3-079-301-01 | SPRING (GLT), TORSION                  |
| 810      | 3-079-319-01 | GEAR, CAM                 | 826      | 3-079-298-01 | GEAR (T), GL                           |
| 811      | X-3954-274-2 | SLIDER ASSY (N), M        | 827      | 1-686-798-11 | FP-467 FLEXIBLE BOARD                  |
| 812      | 3-079-321-02 | SPRING (PINCH), EXTENSION | 828      | X-3952-927-2 | COASTER (S) ASSY                       |
| 813      | X-3954-273-2 | PLATE ASSY (N), TG2 CAM   | 829      | X-3952-930-3 | ROLLER ASSY, TG5                       |
| 814      | 3-079-312-01 | SHIELD, MOTOR             | 830      | X-3952-929-1 | COASTER (T) ASSY                       |
| 815      | 3-079-307-02 | HOLDER, MOTOR             | M902     | A-7095-396-A | MOTOR BLOCK ASSY, L (LOADING)          |
| 816      | 3-085-330-01 | SCREW, SPECIAL            | S902     | 1-477-679-11 | ROTARY, ENCODER (SWITCH) (MODE SWITCH) |

**CD-533****CR-050****FP-180****FP-186****FP-187****FP-467****FP-826****5-2. ELECTRICAL PARTS LIST**

| Ref. No. | Part No.       | Description  |
|----------|----------------|--|
|          | A-1081-698-A   | CD-533 BOARD, COMPLETE<br>*****<br>(IC101 is not included in this complete board)          |
|          |                | < CAPACITOR >  |
| C101     | 1-104-851-11   | TANTAL. CHIP 10uF 20% 10V  |
| C102     | 1-164-850-11   | CERAMIC CHIP 10PF 0.5PF 50V  |
| C104     | 1-127-820-11   | CERAMIC CHIP 4.7uF 10% 16V   |
|          |                | < CONNECTOR >  |
| CN101    | 1-691-354-21   | CONNECTOR, FFC/FPC (ZIF) 16P   |
|          |                | < COIL >   |
| L101     | 1-469-528-91   | INDUCTOR 100uH   |
|          |                | < IC >   |
| IC101    | 8-753-215-47   | ICX440NKF-13 (CCD IMAGER)<br>(HC21/HC32/HC33) (Note)                                       |
| IC101    | 8-753-215-49   | ICX441NKF-13 (CCD IMAGER)<br>(EXCEPT HC21/HC32/HC33) (Note)                                |
|          |                | < TRANSISTOR >   |
| Q101     | 8-729-423-55   | TRANSISTOR 2SC3931-D   |
|          |                | < RESISTOR >   |
| R101     | 1-218-959-11   | RES-CHIP 3.3K 5% 1/16W   |
|          | A-1081-704-A   | CR-050 BOARD, COMPLETE<br>(HC22E/HC32/HC32E/HC33/HC33E)<br>*****                           |
|          |                | < CONNECTOR >  |
| CN001    | 1-817-283-41   | CONNECTOR, FPC (ZIF) 51P   |
| CN002    | (Not supplied) | CONNECTOR, MULTIPLE (SOCKET)   |
|          |                | < DIODE >  |
| D001     | 6-500-044-01   | DIODE DF6A6.8FU (TE85R)  |
| D002     | 6-500-044-01   | DIODE DF6A6.8FU (TE85R)  |
| D003     | 6-500-044-01   | DIODE DF6A6.8FU (TE85R)  |
| D005     | 6-500-044-01   | DIODE DF6A6.8FU (TE85R)  |
| D006     | 6-500-776-01   | DIODE MAZW068HOLSO   |
| D007     | 8-719-083-91   | DIODE EDZ TE61 6.8B  |
|          | 1-864-756-11   | FP-180 FLEXIBLE BOARD<br>*****<br>(BH001 and J001 are not included in this flexible board) |
|          |                | < BATTERY TERMINAL >   |
| BH001    | 1-780-064-21   | BATTERY TERMINAL BOARD   |
|          |                | < JACK >   |
| J001     | 1-815-792-11   | CONNECTOR, DC-IN (7.2V) (DC IN)  |

| Ref. No. | Part No.       | Description   |
|----------|----------------|---|
|          | A-1082-042-A   | FP-186 FLEXIBLE BOARD, COMPLETE<br>*****  |
|          |                | < SWITCH >  |
| S101     | 1-786-179-31   | SWITCH, PUSH (1KEY) (PANEL REVERSE)   |
|          | A-1082-203-A   | FP-187 FLEXIBLE BOARD, COMPLETE<br>*****  |
|          |                | < DIODE >   |
| D001     | 6-501-052-01   | DIODE CL-197HB1-D-T (EASY)  |
| D002     | 6-500-776-01   | DIODE MAZW068HOLSO  |
| D003     | 6-500-776-01   | DIODE MAZW068HOLSO  |
| D004     | 8-719-060-92   | DIODE SML-311YTT86 (CHG)  |
|          |                | < RESISTOR >  |
| R001     | 1-216-822-11   | METAL CHIP 1.2K 5% 1/10W  |
| R002     | 1-216-823-11   | METAL CHIP 1.5K 5% 1/10W  |
| R003     | 1-216-817-11   | METAL CHIP 470 5% 1/10W   |
| R004     | 1-216-805-11   | METAL CHIP 47 5% 1/10W  |
|          |                | < SWITCH >  |
| S001     | 1-771-138-82   | SWITCH, KEY BOARD (DSPL/BATT INFO)  |
| S002     | 1-771-138-82   | SWITCH, KEY BOARD (EASY)  |
| S003     | 1-771-138-82   | SWITCH, KEY BOARD (BACK LIGHT)  |
| S004     | 1-786-180-31   | SWITCH, PUSH (1KEY) (PANEL OPEN/CLOSE)  |
|          | 1-686-798-11   | FP-467 FLEXIBLE BOARD<br>*****<br>(S902 is not included in this flexible board)                     |
|          |                | < SWITCH >  |
| S902     | 1-477-679-11   | ROTARY, ENCODER (SWITCH) (MODE SWITCH)  |
|          | (Not supplied) | FP-826 FLEXIBLE BOARD<br>*****<br>(This flexible board is included in LS BLOCK ASSY (A-7095-951-A)) |
|          |                | < DIODE >   |
| D901     | 6-500-652-01   | DIODE GL453SE0000F (TAPE LED)   |
|          |                | < HOLL ELEMENT >  |
| H901     | 8-719-067-74   | ELEMENT, HOLE HW-105A-CDE-T (S REEL)  |
| H902     | 8-719-067-74   | ELEMENT, HOLE HW-105A-CDE-T (T REEL)  |
|          |                | < CONNECTOR >   |
| MIC902   | 1-817-175-12   | PIN, CONNECTOR (WITH DELCTION SWITCH)   |
|          |                | < TRANSISTOR >  |
| Q901     | 6-550-672-01   | TRANSISTOR PT4850FJE00F (TAPE END)  |
| Q902     | 6-550-672-01   | TRANSISTOR PT4850FJE00F (TAPE TOP)  |

**FP-826**

**JK-278**

**LB-109**

**MS-249**

**PD-237**

| Ref. No. | Part No.     | Description   |
|----------|--------------|---|
|          |              | < SWITCH >  |
| S903     | 1-529-566-51 | SWITCH, PUSH (1 KEY) (C.C. DOWN)  |
|          | A-1081-840-A | JK-278 BOARD, COMPLETE<br>(HC17E/HC19E/HC21/HC21E)  |
|          | A-1081-841-A | JK-278 BOARD, COMPLETE<br>(HC22E/HC32/HC32E/HC33/HC33E)   |
|          |              | *****   |
|          |              | < CONNECTOR >   |
| CN701    | 1-815-794-21 | CONNECTOR (MULTIPLE)<br>(A/V OUT: HC17E/HC19E/HC21/HC21E/HC22E)<br>(A/V: HC32/HC32E/HC33/HC33E) |
| CN702    | 1-794-962-11 | CONNECTOR, SQUARE TYPE (USB 5P) (USB)<br>(HC17E/HC19E/HC21/HC21E)                               |
| CN703    | 1-794-276-11 | CONNECTOR, SQUARE TYPE 4P<br>(DV OUT: HC17E/HC19E)<br>(DV IN/OUT: HC21/HC21E)                   |
| CN704    | 1-818-087-31 | CONNECTOR, FFC/FPC (LIF) 26P  |
|          |              | < DIODE >   |
| D703     | 8-719-078-02 | DIODE 1SS357 (T3SONY1)<br>(HC17E/HC19E/HC21/HC21E)  |
| D705     | 6-500-044-01 | DIODE DF6A6.8FU (TE85R)   |
| D706     | 6-500-044-01 | DIODE DF6A6.8FU (TE85R)   |
| D707     | 6-500-044-01 | DIODE DF6A6.8FU (TE85R)   |
|          |              | < FUSE >  |
| △F701    | 1-576-647-11 | FUSE (0.2A/50V) (HC17E/HC19E/HC21/HC21E)  |
| △F702    | 1-576-647-11 | FUSE (0.2A/50V) (HC17E/HC19E/HC21/HC21E)  |
|          |              | < FERRITE BEAD >  |
| FB701    | 1-400-823-11 | EMI FERRITE (SMD)(1005)   |
| FB702    | 1-400-823-11 | EMI FERRITE (SMD)(1005)   |
| FB703    | 1-400-823-11 | EMI FERRITE (SMD)(1005)   |
|          |              | < JACK >  |
| J701     | 1-793-995-11 | JACK, SUPER SMALL TYPE (LANC)   |
|          |              | < LINE FILTER >   |
| LF701    | 1-456-583-11 | COMMON MODE CHOKE COIL<br>(HC17E/HC19E/HC21/HC21E)  |
|          |              | < RESISTOR >  |
| R702     | 1-218-965-11 | RES-CHIP 10K 5% 1/16W<br>(HC17E/HC19E/HC21/HC21E)   |
| R703     | 1-218-965-11 | RES-CHIP 10K 5% 1/16W<br>(HC17E/HC19E/HC21/HC21E)   |
| R705     | 1-218-990-11 | SHORT CHIP 0  |
| R706     | 1-218-990-11 | SHORT CHIP 0  |
| R707     | 1-218-990-11 | SHORT CHIP 0  |
| R709     | 1-218-990-11 | SHORT CHIP 0  |

| Ref. No. | Part No.     | Description   |
|----------|--------------|---|
|          | A-1081-845-A | LB-109 BOARD, COMPLETE<br>*****                           |
|          |              | < CAPACITOR >   |
| C301     | 1-125-777-11 | CERAMIC CHIP 0.1uF 10% 10V                                |
| C302     | 1-165-908-11 | CERAMIC CHIP 1uF 10% 10V                                  |
| C303     | 1-164-505-11 | CERAMIC CHIP 2.2uF 16V                                    |
|          |              | < CONNECTOR >   |
| CN301    | 1-818-046-11 | CONNECTOR, FFC/FPC 20P                                    |
| CN302    | 1-784-420-11 | CONNECTOR, FFC/FPC (ZIF) 21P                              |
|          |              | < DIODE >   |
| D302     | 6-500-941-01 | DIODE MAZS056008S0  |
| D303     | 6-500-874-01 | DIODE E1S35-AW0C7-01-A2 (BACKLIGHT)                       |
|          |              | < RESISTOR >  |
| R302     | 1-216-841-11 | METAL CHIP 47K 5% 1/10W                                   |
| R303     | 1-218-971-11 | RES-CHIP 33K 5% 1/16W                                     |
| R304     | 1-218-975-11 | RES-CHIP 68K 5% 1/16W                                     |
| R305     | 1-218-989-11 | RES-CHIP 1M 5% 1/16W                                      |
|          | A-1081-842-A | MS-249 BOARD, COMPLETE<br>(HC17E/HC19E/HC21/HC21E/HC22E)  |
|          | A-1081-843-A | MS-249 BOARD, COMPLETE<br>(HC32/HC32E/HC33/HC33E)         |
|          |              | *****   |
|          |              | < BATTERY >   |
| △BT501   | 1-756-075-21 | BATTERY, LITHIUM (SECONDARY)                              |
|          |              | < CONNECTOR >   |
| * CN501  | 1-691-378-21 | CONNECTOR, FFC/FPC 14P                                    |
| CN502    | 1-778-506-21 | PIN, CONNECTOR (PC BOARD) 2P                              |
| CN503    | 1-817-913-41 | MEMORY STICK DUO CONNECTOR<br>(HC32/HC32E/HC33/HC33E)     |
|          |              | < DIODE >   |
| D501     | 6-500-817-01 | DIODE SML-512UWT86 (MS ACCESS)<br>(HC32/HC32E/HC33/HC33E) |
| D503     | 6-500-776-01 | DIODE MAZW068H0LS0  |
|          |              | < RESISTOR >  |
| R501     | 1-218-949-11 | RES-CHIP 470 5% 1/16W<br>(HC32/HC32E/HC33/HC33E)          |
|          |              | < SWITCH >  |
| S501     | 1-771-138-82 | SWITCH, KEY BOARD (RESET)                                 |
|          | A-1081-848-A | PD-237 BOARD, COMPLETE<br>*****                           |
| C602     | 1-164-939-11 | CERAMIC CHIP 0.0022uF 10% 50V                             |
| C603     | 1-137-710-11 | CERAMIC CHIP 10uF 20% 6.3V                                |

**CAUTION**  
 Danger of explosion if battery is incorrectly replaced.  
 Replace only with the same or equivalent type.

|  |  |
|--|--|
| The components identified by mark △ or dotted line with mark △ are critical for safety. Replace only with part number specified. | Les composants identifiés par une marque △ sont critiques pour la sécurité. Ne les remplacer que par une pièce portant le numéro spécifié. |
|--|--|

| Ref. No.         | Part No.     | Description                      |
|------------------|--------------|----------------------------------|
| C604             | 1-104-847-11 | TANTAL. CHIP 22uF 20% 4V         |
| C606             | 1-165-908-11 | CERAMIC CHIP 1uF 10% 10V         |
| C608             | 1-125-777-11 | CERAMIC CHIP 0.1uF 10% 10V       |
| C609             | 1-137-710-11 | CERAMIC CHIP 10uF 20% 6.3V       |
| C610             | 1-125-777-11 | CERAMIC CHIP 0.1uF 10% 10V       |
| C611             | 1-165-897-11 | TANTAL. CHIP 22uF 20% 10V        |
| C612             | 1-164-739-11 | CERAMIC CHIP 560PF 5% 50V        |
| C614             | 1-164-943-11 | CERAMIC CHIP 0.01uF 10% 16V      |
| C615             | 1-164-943-11 | CERAMIC CHIP 0.01uF 10% 16V      |
| C616             | 1-164-943-11 | CERAMIC CHIP 0.01uF 10% 16V      |
| C618             | 1-125-889-91 | CERAMIC CHIP 2.2uF 10% 10V       |
| C619             | 1-125-889-91 | CERAMIC CHIP 2.2uF 10% 10V       |
| C621             | 1-135-957-91 | TANTAL. CHIP 10uF 20% 16V        |
| C622             | 1-127-760-11 | CERAMIC CHIP 4.7uF 10% 6.3V      |
| C623             | 1-137-710-11 | CERAMIC CHIP 10uF 20% 6.3V       |
| C624             | 1-125-777-11 | CERAMIC CHIP 0.1uF 10% 10V       |
| C625             | 1-164-943-11 | CERAMIC CHIP 0.01uF 10% 16V      |
| C626             | 1-165-908-11 | CERAMIC CHIP 1uF 10% 10V         |
| C627             | 1-125-777-11 | CERAMIC CHIP 0.1uF 10% 10V       |
| C631             | 1-165-908-11 | CERAMIC CHIP 1uF 10% 10V         |
| C632             | 1-117-919-11 | TANTAL. CHIP 10uF 20% 6.3V       |
| C633             | 1-127-760-11 | CERAMIC CHIP 4.7uF 10% 6.3V      |
| < CONNECTOR >    |              |                                  |
| CN601            | 1-815-031-11 | FFC/CONNECTOR, FPC (ZIF) 24P     |
| CN602            | 1-816-176-11 | FFC/CONNECTOR, FPC (ZIF) 6P      |
| CN603            | 1-691-370-11 | CONNECTOR, FFC/FPC 6P            |
| CN605            | 1-815-031-11 | FFC/CONNECTOR, FPC (ZIF) 24P     |
| CN608            | 1-816-176-11 | CONNECTOR, FFC/FPC (ZIF) 6P      |
| CN609            | 1-816-176-11 | CONNECTOR, FFC/FPC (ZIF) 6P      |
| < DIODE >        |              |                                  |
| D602             | 8-719-074-67 | DIODE EDZ-TE61-5.6B              |
| < FERRITE BEAD > |              |                                  |
| FB601            | 1-400-461-21 | FERRITE, EMI (SMD)(1005)         |
| < IC >           |              |                                  |
| IC601            | 8-759-693-13 | IC NJM12904V (TE2)               |
| IC602            | 8-753-229-98 | IC CXM3006CR-T4                  |
| < COIL >         |              |                                  |
| L601             | 1-400-588-11 | INDUCTOR, LAMINATE CHIP 10uH     |
| L602             | 1-400-588-11 | INDUCTOR, LAMINATE CHIP 10uH     |
| L603             | 1-400-588-11 | INDUCTOR, LAMINATE CHIP 10uH     |
| < TRANSISTOR >   |              |                                  |
| Q601             | 8-729-427-52 | TRANSISTOR XP4216                |
| Q602             | 8-729-427-23 | TRANSISTOR XP4116-TXE            |
| Q606             | 8-729-026-53 | TRANSISTOR 2SA1576A-T106-QR      |
| Q607             | 8-729-026-53 | TRANSISTOR 2SA1576A-T106-QR      |
| Q608             | 6-550-234-01 | TRANSISTOR UNR32A300LS0          |
| Q609             | 8-729-041-23 | TRANSISTOR NDS356AP              |
| Q610             | 6-550-232-01 | TRANSISTOR 2SA2029T2LQ/R         |
| Q611             | 8-729-026-53 | TRANSISTOR 2SA1576A-T106-QR      |
| Q612             | 8-729-053-52 | TRANSISTOR HN1C01FE-Y/GR (TPLR3) |

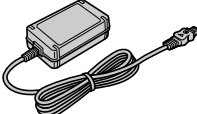

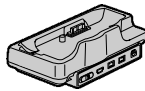



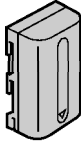

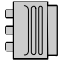


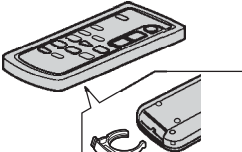

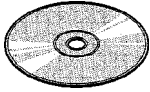

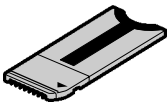
| Ref. No.                      | Part No.                              | Description                                    |
|-------------------------------|---------------------------------------|--|
| < RESISTOR >                  |                                       |  |
| R605                          | 1-208-855-81                          | METAL CHIP 47 0.5% 1/16W                       |
| R606                          | 1-208-943-11                          | METAL CHIP 220K 0.5% 1/16W                     |
| R608                          | 1-208-927-11                          | METAL CHIP 47K 0.5% 1/16W                      |
| R609                          | 1-218-975-11                          | RES-CHIP 68K 5% 1/16W                          |
| R610                          | 1-218-957-11                          | RES-CHIP 2.2K 5% 1/16W                         |
| R612                          | 1-218-949-11                          | RES-CHIP 470 5% 1/16W                          |
| R613                          | 1-208-934-11                          | METAL CHIP 91K 0.5% 1/16W                      |
| R614                          | 1-208-911-11                          | METAL CHIP 10K 0.5% 1/16W                      |
| R615                          | 1-218-961-11                          | RES-CHIP 4.7K 5% 1/16W                         |
| R616                          | 1-218-957-11                          | RES-CHIP 2.2K 5% 1/16W                         |
| R617                          | 1-218-953-11                          | RES-CHIP 1K 5% 1/16W                           |
| R619                          | 1-208-855-81                          | METAL CHIP 47 0.5% 1/16W                       |
| R620                          | 1-218-965-11                          | RES-CHIP 10K 5% 1/16W                          |
| R623                          | 1-208-855-81                          | METAL CHIP 47 0.5% 1/16W                       |
| R624                          | 1-218-977-11                          | RES-CHIP 100K 5% 1/16W                         |
| R625                          | 1-218-990-11                          | SHORT CHIP 0                                   |
| R626                          | 1-218-954-11                          | RES-CHIP 1.2K 5% 1/16W                         |
| R627                          | 1-218-955-11                          | RES-CHIP 1.5K 5% 1/16W                         |
| R634                          | 1-218-989-11                          | RES-CHIP 1M 5% 1/16W                           |
| R636                          | 1-218-990-11                          | SHORT CHIP 0                                   |
| R637                          | 1-218-978-11                          | RES-CHIP 120K 5% 1/16W                         |
| R638                          | 1-216-864-11                          | SHORT CHIP 0                                   |
| R639                          | 1-216-864-11                          | SHORT CHIP 0                                   |
| R642                          | 1-218-973-11                          | RES-CHIP 47K 5% 1/16W                          |
| R643                          | 1-218-973-11                          | RES-CHIP 47K 5% 1/16W                          |
| < COMPOSITION CIRCUIT BLOCK > |                                       |  |
| RB601                         | 1-234-369-21                          | RES, NETWORK 10 (1005X4)                       |
|                               |                                       |  |
| A-1084-828-A                  | SI-042 BOARD, COMPLETE (HC17E)        |  |
| A-1081-844-A                  | SI-042 BOARD, COMPLETE (EXCEPT HC17E) |  |
| *****                         |                                       |  |
| < CAPACITOR >                 |                                       |  |
| C602                          | 1-125-837-91                          | CERAMIC CHIP 1uF 10% 6.3V                      |
| C603                          | 1-127-760-11                          | CERAMIC CHIP 4.7uF 10% 6.3V                    |
| C608                          | 1-119-923-11                          | CERAMIC CHIP 0.047uF 10% 10V                   |
| C610                          | 1-119-923-11                          | CERAMIC CHIP 0.047uF 10% 10V                   |
| C611                          | 1-119-923-11                          | CERAMIC CHIP 0.047uF 10% 10V                   |
| C612                          | 1-119-923-11                          | CERAMIC CHIP 0.047uF 10% 10V                   |
| C613                          | 1-137-710-11                          | CERAMIC CHIP 10uF 20% 6.3V                     |
| C614                          | 1-137-710-11                          | CERAMIC CHIP 10uF 20% 6.3V                     |
| C615                          | 1-137-710-11                          | CERAMIC CHIP 10uF 20% 6.3V                     |
| C616                          | 1-137-710-11                          | CERAMIC CHIP 10uF 20% 6.3V                     |
| C618                          | 1-127-760-11                          | CERAMIC CHIP 4.7uF 10% 6.3V                    |
| C619                          | 1-127-760-11                          | CERAMIC CHIP 4.7uF 10% 6.3V                    |
| C621                          | 1-100-252-11                          | CERAMIC CHIP 0.1uF 10% 6.3V                    |
| < CONNECTOR >                 |                                       |  |
| CN601                         | 1-778-507-21                          | PIN, CONNECTOR (PC BOARD) 4P                   |
| CN603                         | 1-766-348-21                          | CONNECTOR, FFC/FPC 18P                         |
| < DIODE >                     |                                       |  |
| D601                          | 6-500-512-01                          | DIODE CL-330IRS-X-TU<br>(IR EMITTER/NIGHTSHOT) |

**SI-042**

| <u>Ref. No.</u>               | <u>Part No.</u> | <u>Description</u>                         |
|-------------------------------|-----------------|--|
| D602                          | 6-500-817-01    | DIODE SML-512UWT86<br>(CAMERA RECORDING)   |
| D604                          | 8-719-988-61    | DIODE 1SS355TE-17                          |
| < FERRITE BEAD >              |                 |  |
| FB601                         | 1-469-179-21    | INDUCTOR, FERRITE BEAD                     |
| FB602                         | 1-469-179-21    | INDUCTOR, FERRITE BEAD                     |
| FB603                         | 1-469-179-21    | INDUCTOR, FERRITE BEAD                     |
| FB604                         | 1-469-179-21    | INDUCTOR, FERRITE BEAD                     |
| < IC >                        |                 |  |
| IC601                         | 6-600-163-01    | IC RS-770 (EXCEPT HC17E)                   |
| IC602                         | 8-759-489-19    | IC uPC6756GR-8JG-E2                        |
| < COIL >                      |                 |  |
| L601                          | 1-400-588-11    | INDUCTOR, LAMINATE CHIP 10uH               |
| < RESISTOR >                  |                 |  |
| R601                          | 1-218-949-11    | RES-CHIP 470 5% 1/16W                      |
| R602                          | 1-218-989-11    | RES-CHIP 1M 5% 1/16W                       |
| R603                          | 1-218-965-11    | RES-CHIP 10K 5% 1/16W                      |
| R604                          | 1-218-937-11    | RES-CHIP 47 5% 1/16W                       |
| R605                          | 1-218-965-11    | RES-CHIP 10K 5% 1/16W                      |
| R606                          | 1-218-989-11    | RES-CHIP 1M 5% 1/16W                       |
| R607                          | 1-216-821-11    | METAL CHIP 1K 5% 1/10W                     |
| < COMPOSITION CIRCUIT BLOCK > |                 |  |
| RB601                         | 1-234-379-21    | RES, NETWORK 22K (1005X4)                  |
| < SWITCH >                    |                 |  |
| S601                          | 1-786-148-11    | SWITCH, PUSH (1 KEY) (LENS COVER OPEN)     |
| < SENSOR >                    |                 |  |
| SE601                         | 1-476-807-41    | SENSOR, ANGULAR VELOCITY<br>(PITCH SENSOR) |
| SE602                         | 1-476-807-31    | SENSOR, ANGULAR VELOCITY (YAW SENSOR)      |

Electrical parts list of the VC-376/377 board  
is not shown.  
Pages 5-15 to 5-28 are not shown.

## Checking supplied accessories.

|  |  |  |   |
|--|--|--|---|
| <br>AC-L AC Adaptor (1)<br>▲ 1-477-534-11   | <br>Power Cord (1)<br>▲ 1-769-608-31 (AEP, E)<br>▲ 1-776-985-11 (KR)<br>▲ 1-782-476-51 (CH)<br>▲ 1-783-374-12 (UK, HK)<br>▲ 1-790-107-41 (US, CND)<br>▲ 1-790-732-71 (JE)<br>▲ 1-827-945-11 (AUS) | <br>Handycam station (1)<br>DCRA-C121<br>1-818-729-11<br>(HC32/HC32E/HC33E)<br>DCRA-C122<br>1-818-729-21 (HC22E) | <br>Shoe cover (1)<br>2-188-481-01           |
| <br>USB cable (1)<br>1-829-868-21<br>(EXCEPT HC17E)   | <br>Shoulder strap (1)<br>2-176-235-01<br>(EXCEPT HC17E)  | <br>Rechargeable battery pack<br>NP-FP30 (1)<br>▲ A-1082-950-A (US, CND)<br>▲ A-1082-951-A<br>(EXCEPT US, CND)   | <br>A/V connecting cable (1)<br>1-823-156-51 |
| <br>21-pin adaptor (1)<br>1-770-783-21<br>(HC22E/HC32E)  | <br>Conversion 2P adaptor (1)<br>▲ 1-569-008-12<br>(HC21/HC32: E)  | <br>Conversion 2P adaptor (1)<br>▲ 1-569-007-12 (JE)  |   |
| <br><br>Battery Holder<br>3-083-973-01<br>Wireless Remote Commander<br>RMT-831 (1)<br>1-477-898-41<br>(HC32/HC32E/HC33/HC33E)<br>RMT-830<br>1-477-898-71<br>(HC19E/HC21/HC21E/HC22E) | <br>CD-ROM<br>(SPVD-012 2005 USB Driver)<br>(Picture Package Ver. 1.5) (1)<br>2-515-350-01 (EXCEPT HC33E)<br>2-586-797-01 (HC21E/HC33E)   | <br>Memory Stick Duo (1)<br>(not supplied)<br>(HC33/HC33E)  |   |
| <br>Memory Stick Duo adaptor (1)<br>(not supplied)<br>(HC33/HC33E)  |  |  |   |

The components identified by mark ▲ or dotted line with mark ▲ are critical for safety. Replace only with part number specified.

Les composants identifiés par une marque ▲ sont critiques pour la sécurité. Ne les remplacer que par une pièce portant le numéro spécifié.