



## Explanation

<b>Column</b>	<b>Contents</b>
Pos.	Drawing item number or number range for indicating the Mat. no. of the activated line in the function group drawing.
Mat. no.	Material number of the spare part.
SL	Key field with additional information relevant to the item. The following abbreviations may also be displayed here: <ul style="list-style-type: none"> <li>Z In addition to this spare part, the next-listed part is also required.</li> <li>N This refers to a standard part. Optionally a special part may also be fitted.</li> <li>W This special part can optionally be fitted as an alternative to the standard part.</li> <li>A With regard to this item, the following information must also be noted in relation to this item.</li> </ul>
FT	Entry "***" possible. Then the Mat. no. can be replaced by the Mat. no. of the following item.
Qty.	This column indicates how many of the part in question are fitted at this position in the machine.
UOQ	This shows the unit of quantity.
HZ	The heating type is given here. The following entries are possible: <ul style="list-style-type: none"> <li>EL Electric</li> <li>AG Gas</li> <li>HD High-pressure steam</li> <li>ND Low-pressure steam</li> </ul>
Designation	This column displays the designation of the Mat. no. with a spare part, or information text. If the designation is indented by one space, then this item is part of a sub-assembly but can be ordered separately. Fastenings and earthing parts are indented by two spaces.



Beverage preparation  
CVA2650

25.10.2012

---

## Content

Function group overview

010 Casing

020 Door

030 Implement carrier Pump Expansion tank

031 Contin.flow heater Coffee

032 Contin.flow heater steam

040 Container Drip tray Cappuccinatore

050 Percolator Capsule chute DC-motor

060 Power electron.unit Interfer.suppressor Supply cable

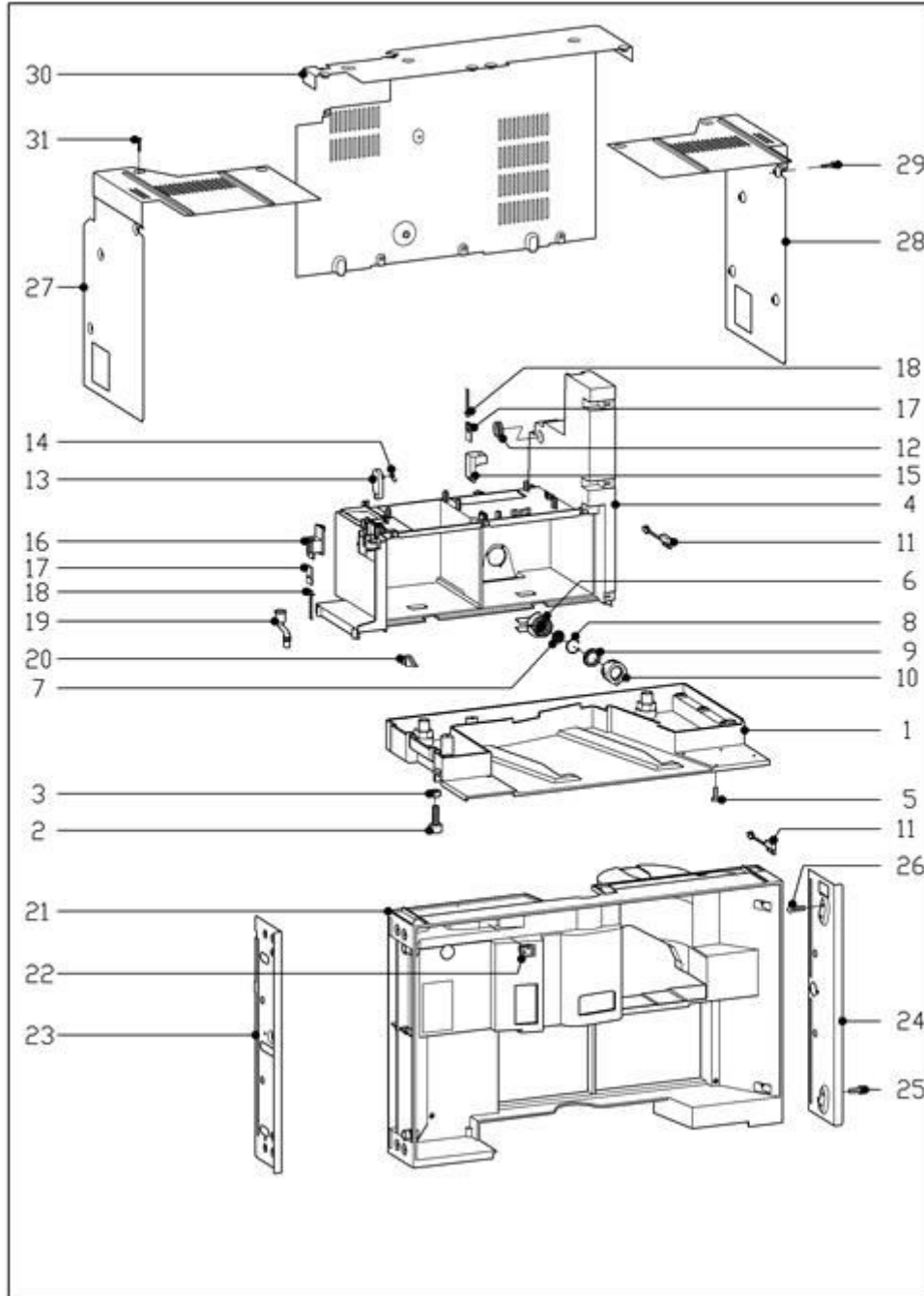
070 Documents



Beverage preparation  
CVA2650

25.10.2012

### 010 Casing



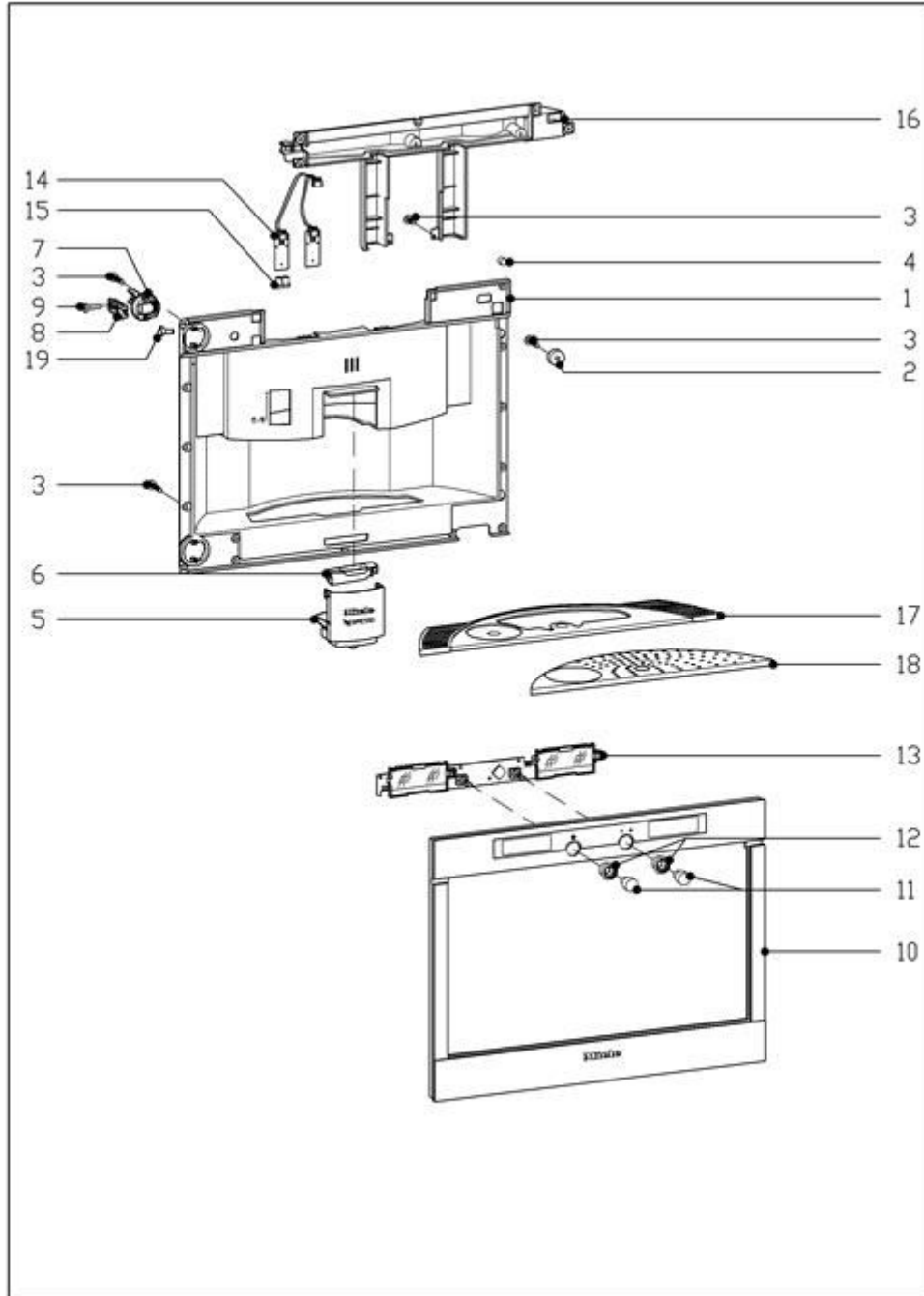
56931



Beverage preparation  
CVA2650

25.10.2012

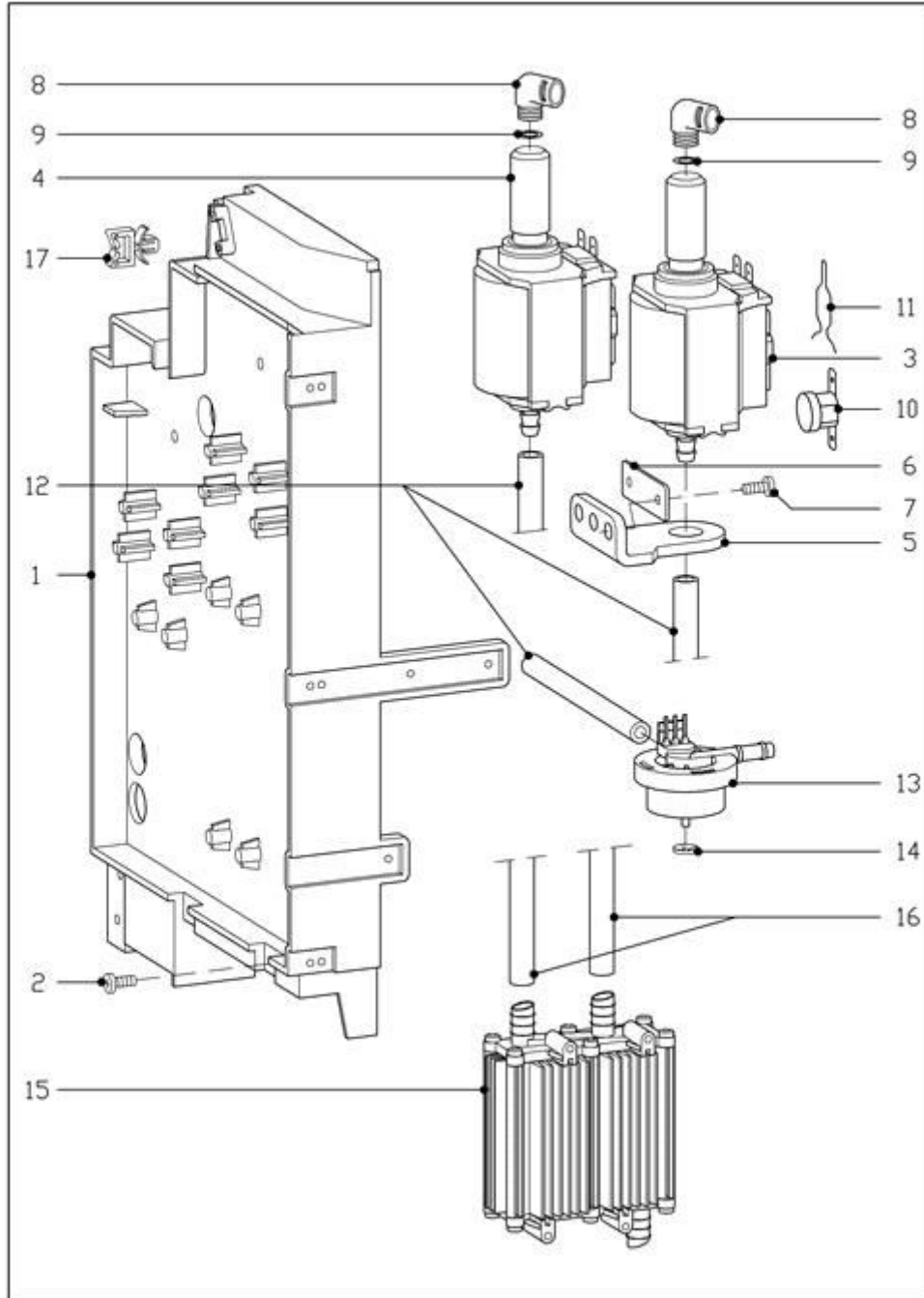
020 Door



6141560-020



**030 Implement carrier Pump Expansion tank**



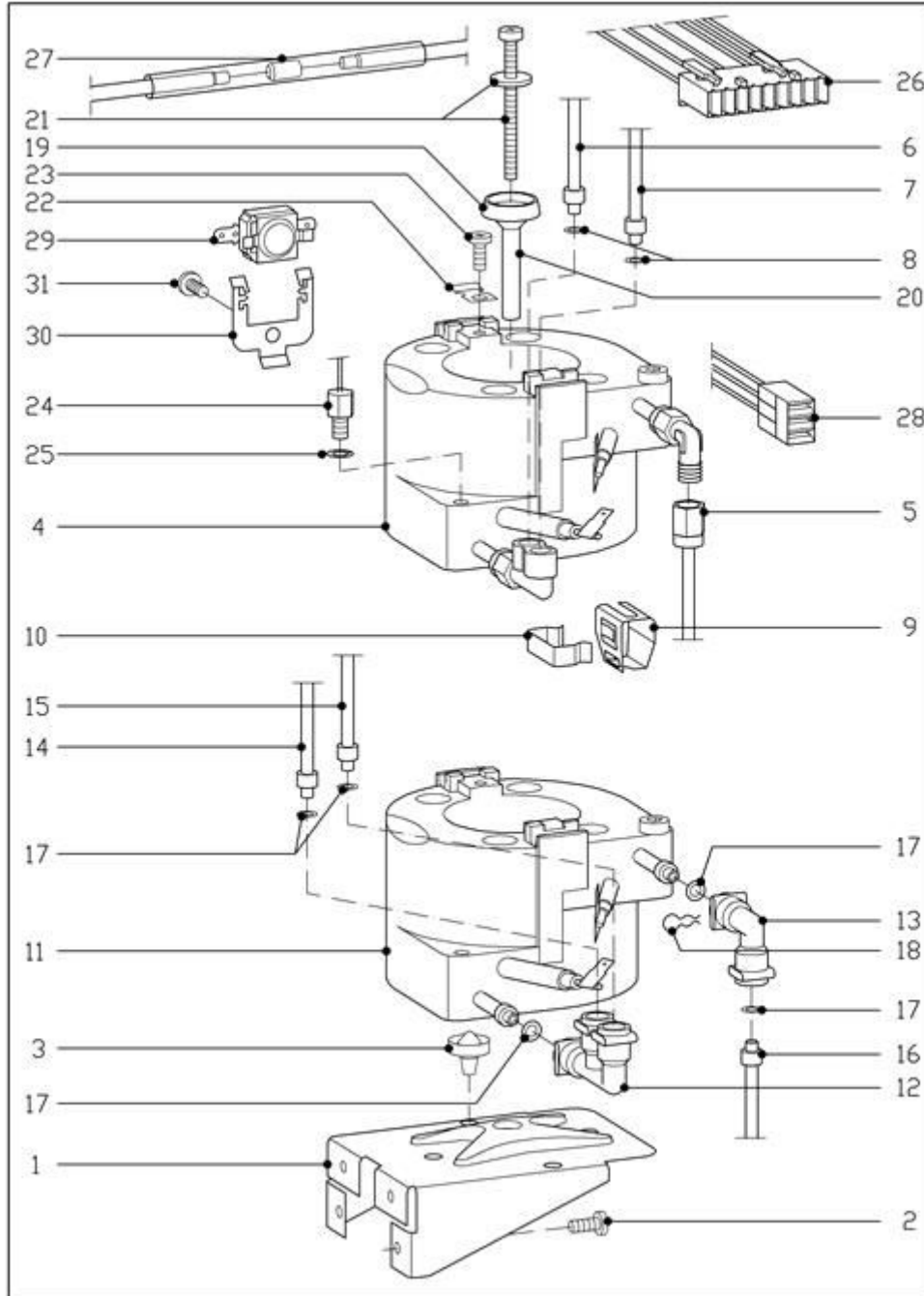
6141560-030



Beverage preparation  
CVA2650

25.10.2012

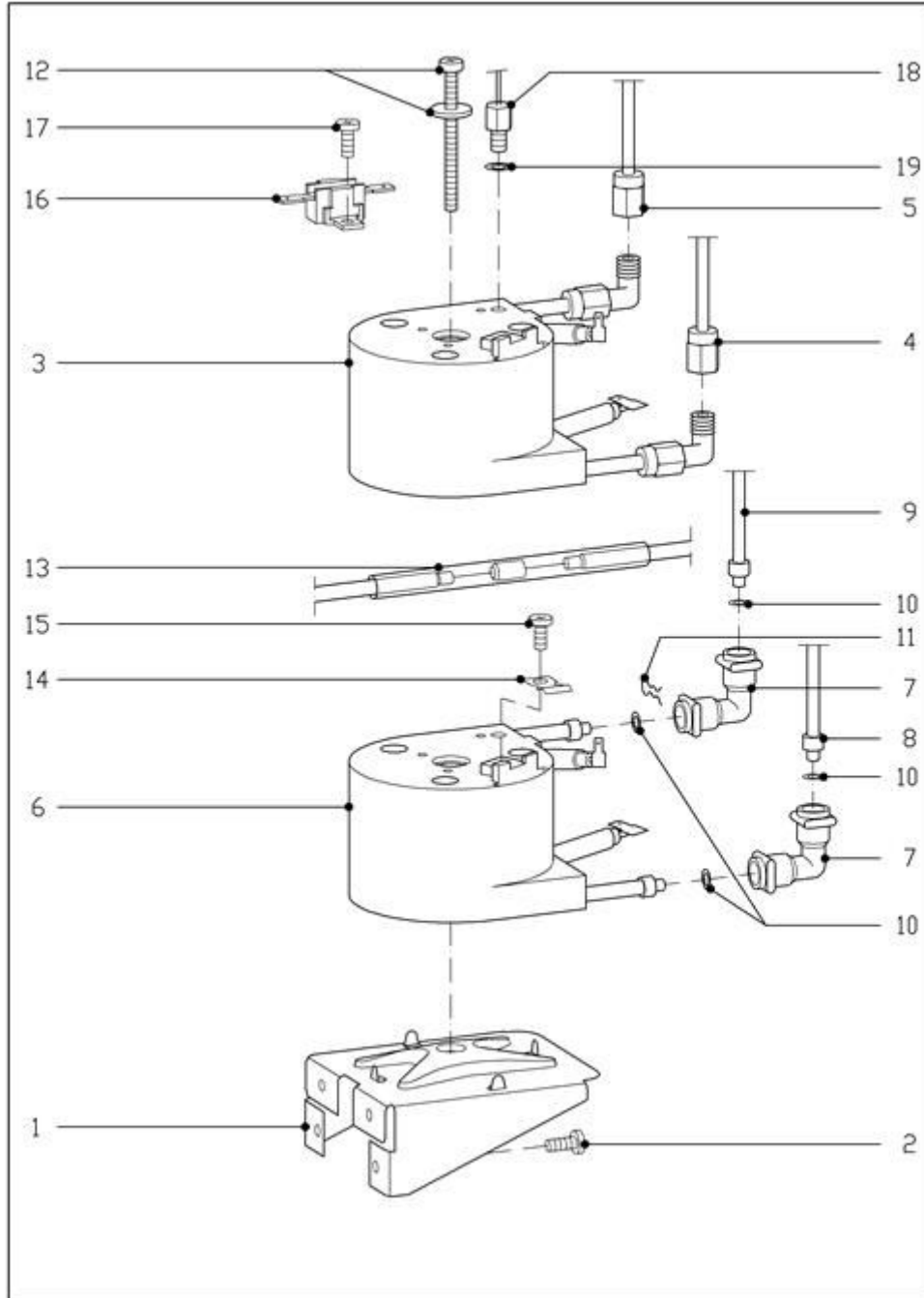
031 Contin.flow heater Coffee



6141560-031

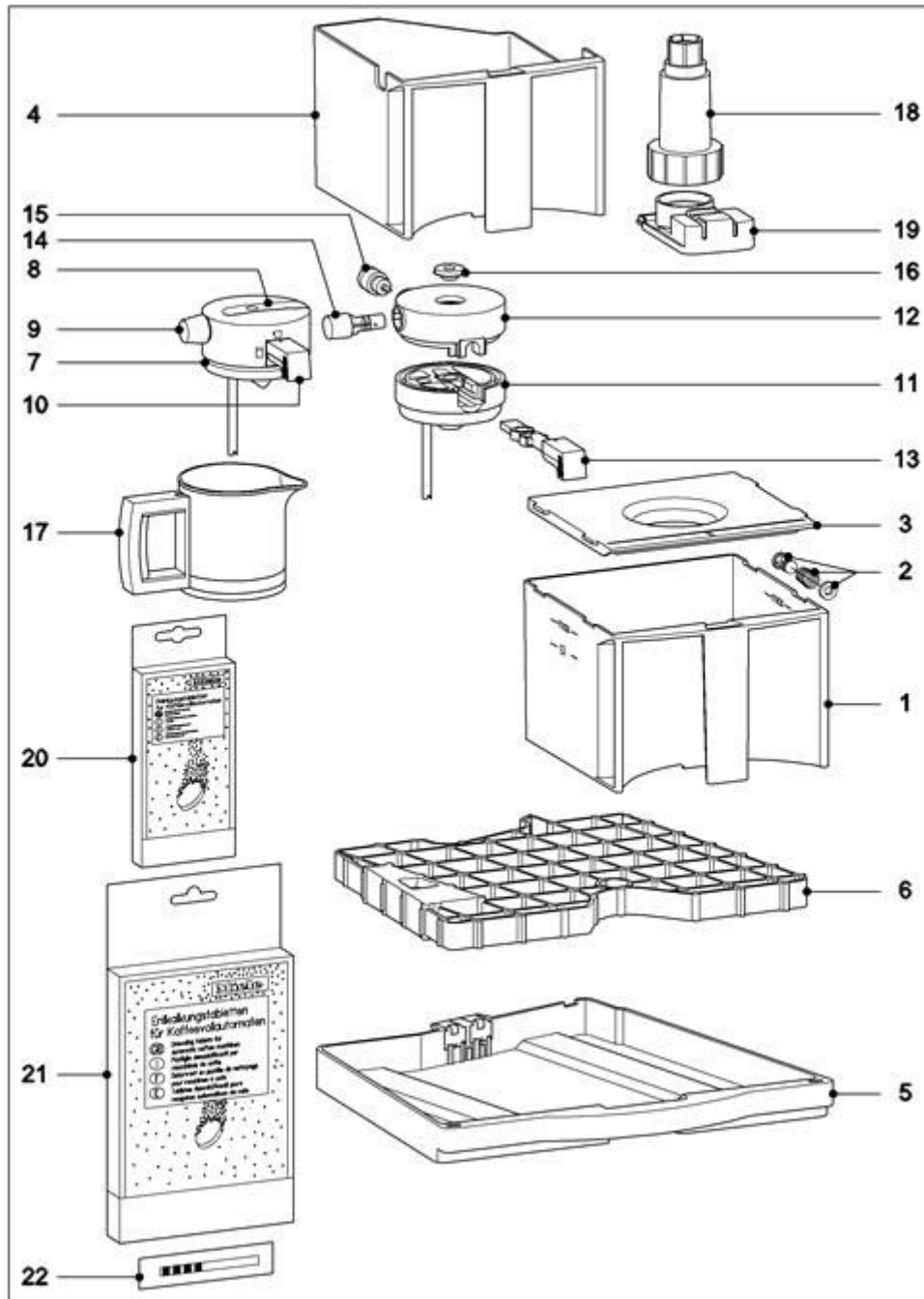


032 Contin.flow heater steam



6141560-032

## 040 Container Drip tray Cappuccinatore



61194

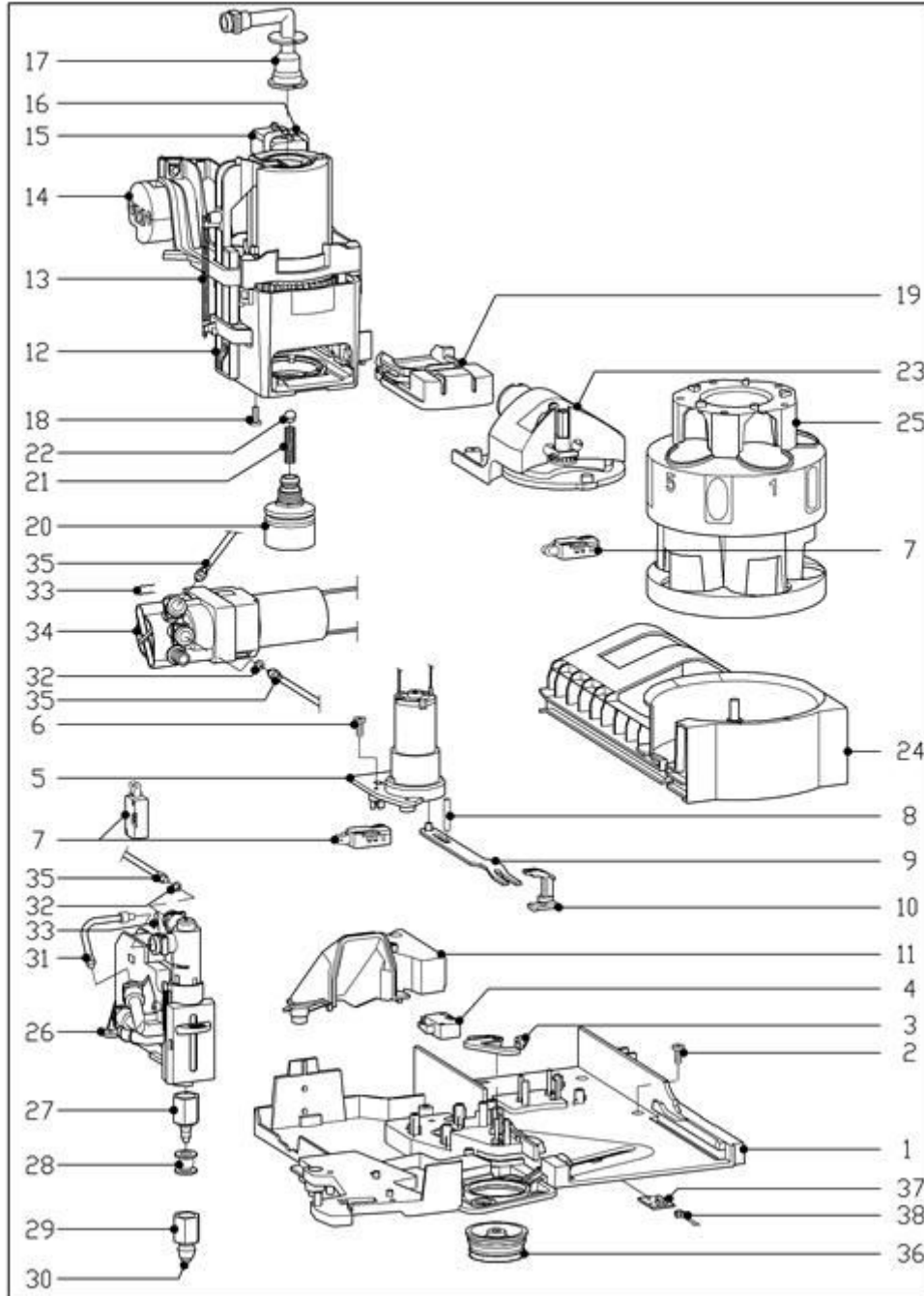




Beverage preparation  
CVA2650

25.10.2012

**050 Percolator Capsule chute DC-motor**



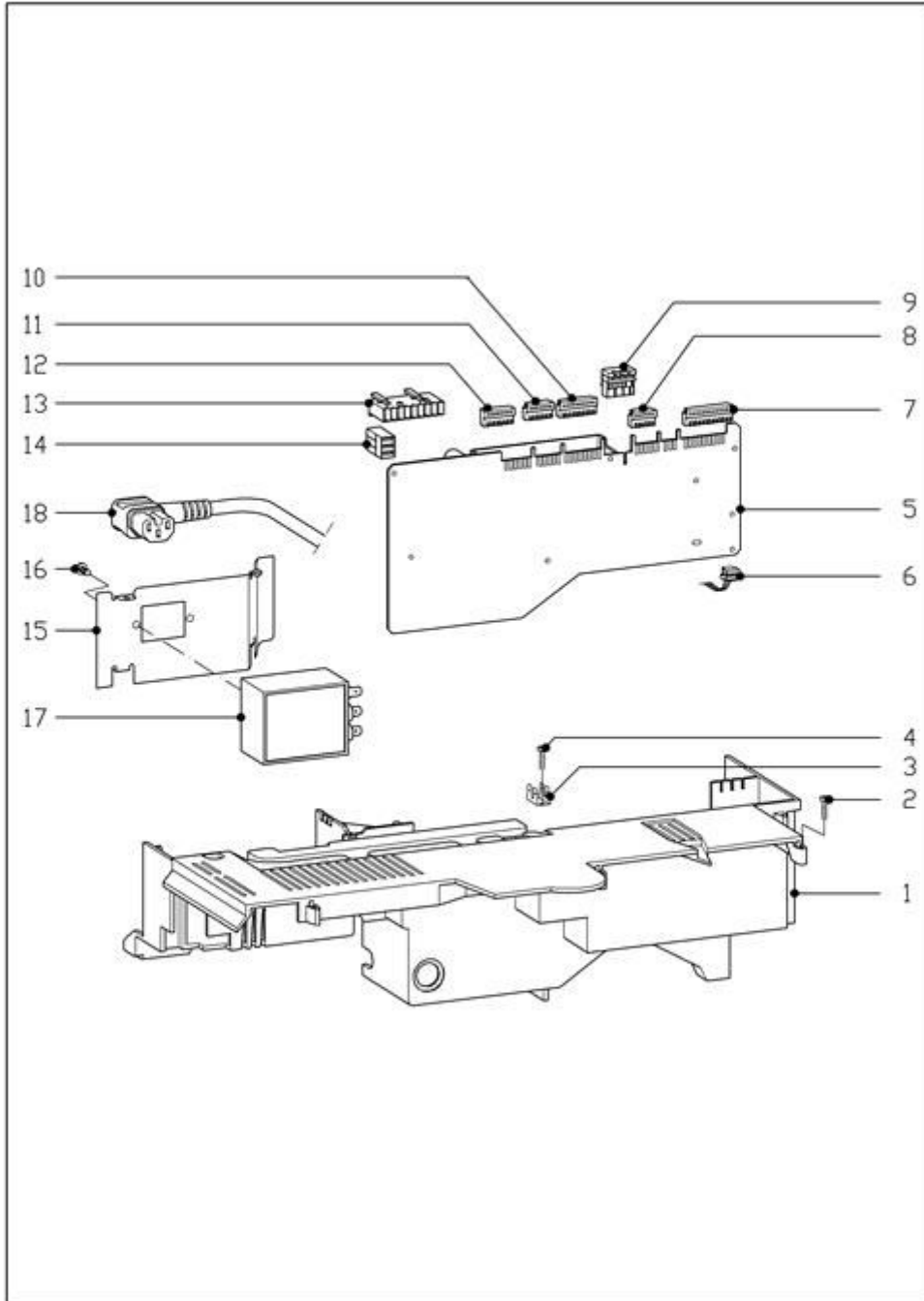
6000870-050



Beverage preparation  
CVA2650

25.10.2012

**060 Power electron.unit Interfer.suppressor Supply cable**



6000870-060

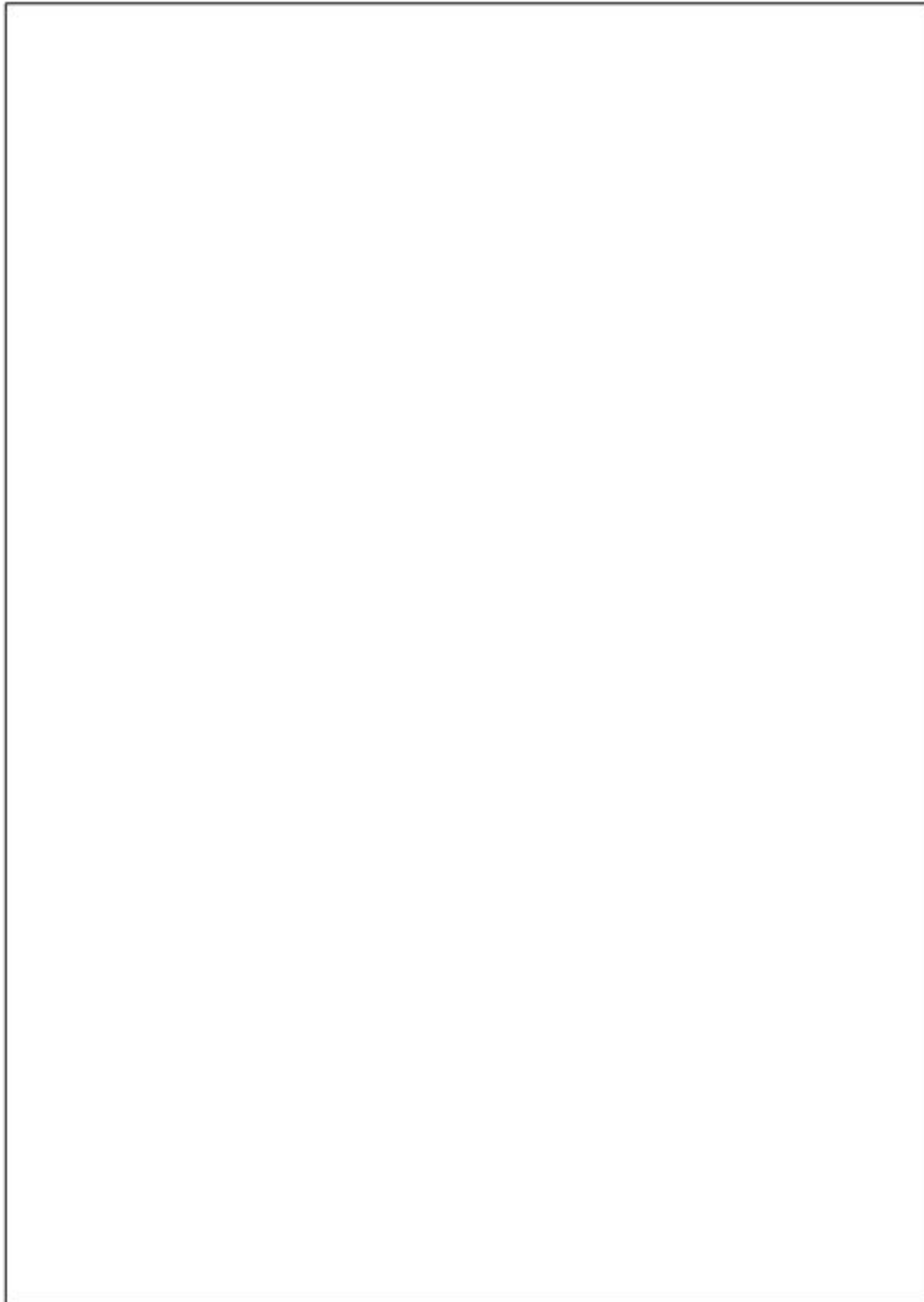


Beverage preparation  
CVA2650

25.10.2012

---

**070 Documents**



9999999-999