




Service information

 [Print this page](#)

[Back to Service Information](#)

Reference no.: **SCC_109324**

Symptom

TV set type 40PUx6809/xx is not powered

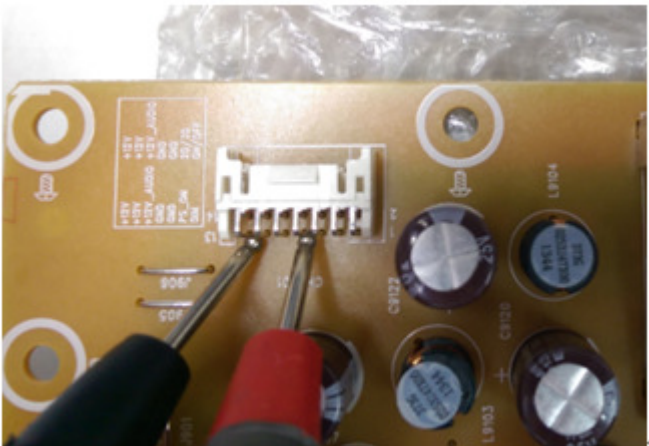
Cure

The power failure is caused by one or two defective diodes for 12V supply on the PSU board.

Follow these steps to check if D9106 and/or D9107 is defective and to perform the replacement.

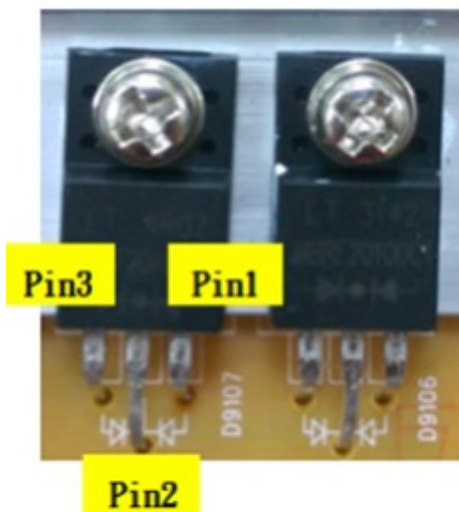
Step 1

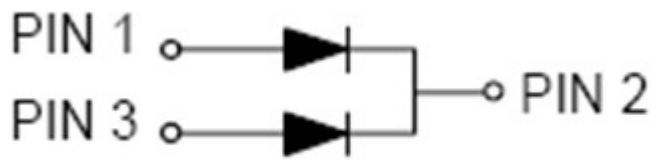
- On the PSU board, check with a multi-meter if there is 12V output on Pin13, Pin5 being GND.
- If no 12V output is measured, then proceed with step 2.



Step 2

- Remove diode D9106 and/or D9107 from the power board.
- Check the diode(s) on short circuit, with a multi-meter measure the resistance between Pin2 and Pin3 and/or between Pin2 and Pin1 and record in the table below.





Diode D/C	Part	Pin	Result
LT xxxx	D910x	Pin2-->Pin1	
		Pin2-->Pin3	

- c. If the diodes are defective, then remove the PSU board and perform the following replacement:
- Central Repair Workshops (CSPs) replace both diodes: Proceed with Step 3.
 - General Workshops replace the entire PSU board: Proceed with Step 4.

Step 3 (Central Repair Workshops only)

- a. Select two replacement Sanken Diodes (part number: FMEN-220A, TPV P/N: 093G 60329) for D9106 and D9107.



- b. Pre-paint them with cooling oil.
- c. Screw back each diode on to the heat sink, then solder the pins.
- d. Mark an "S" on the bar code label to indicate that the diodes have been replaced with Sanken devices.



- e. Replace R9112 with a new one (TPV part number - 061G1206100 JT, Spec - RST CHIPR 10 OHM +-5% 1/4W TZAI YUAN).
- f. Proceed with Step 5.

Step 4 (General Workshops only)

Select a replacement PSU board with Sanken Diodes ("green" mark on the heatsink)

Step 5

Mount the repaired or replacement PSU board in the TV and check if it is properly functioning.

Step 6

- a. Return the defective diodes to the supplier for analysis, and, only in case of General Workshops, send the defective PSU board to RTS for repair.
- b. Log the case with Symptom code "111", description "NO POWER".

Remark

Mandatory action : For prevention, perform the replacement on all 40PUx6809/xx sets regardless of the issue reported . After removing the PSU board:

- Central Repair Workshops start with Step 3 to replace the diodes.
- General Workshops start with Step 4 to replace the PSU board.