



---

# Service Manual

## Microwave oven

### AT 310/WH

---

<b>Model Version</b>		<b>Page</b>
AT 310/WH		
8587 310 10291		
	Introduction safety	2
	Technical data	3
	Spare part list	4
	Exploded view	5
	Wiring diagram	6

## Introduction safety

### INTRODUCTION

Before leaving the factory each oven is carefully checked.  
It must, however, be installed and used correctly.

Despite all the steps taken to make the oven safe, the safety is dependent on the correct installation and the fact the user understands how to use and maintain the oven.

The information in this section should be used as a reminder that the oven is safe and that anyone who uses it must first read the instructions for use in order to be able to use the oven correctly and obtain best results.

### SAFETY

To avoid injury to yourself and damage to the appliance always work to the following rules when servicing an oven.

Always disconnect the plug from the mains before starting work.

If there is no plug switch off the electric supply at the control box.

When you have finished servicing an oven before you reconnect it to the mains, make sure that:

- all the internal connections are correct
- the wires are insulated and not touching the door or the cabinet or anything sharp
- all the earth connections are electrically and mechanically sound
- do not modify or anyway interfere with the safety devices built-in to the oven

- make sure that each replacement part you use conforms to the manufacturer's specifications

Do not start a repair if you have any doubt as to your ability to complete it.

### CAUTION - MICROWAVE RADIATION

PERSONNEL SHOULD NOT BE EXPOSED TO THE MICROWAVE ENERGY WHICH MAY RADIATE FROM THE MAGNETRON, WAVEGUIDE OR ANTENNA IF THEY ARE IMPROPERLY USED OR CONNECTED. ALL INPUT AND OUTPUT MICROWAVE CONNECTIONS, WAVEGUIDES, FLANGES AND GASKETS MUST BE SECURE. NEVER OPERATE THE DEVICE WITHOUT A MICROWAVE ENERGY ABSORBING LOAD ATTACHED. NEVER LOOK INTO AN OPEN WAVEGUIDE OR ANTENNA WHILE THE DEVICE IS ENERGIZED. NEVER OPERATE AN OVEN WITH CABINET OFF WITHOUT MEASURING THE MICROWAVE LEAKAGE AROUND MAGNETRON AND VISIBLE MICROWAVE CONNECTIONS (WELDING JOINTS).

Do not operate the oven if the following conditions exist:

- the door does not close firmly against the door support because of the door being warped or the hinges damaged.
- The door trims or seals are damaged.
- If there is any visible damage to the oven.
- if the door does not close properly.

Avoid operating the oven if known components in the interlock system, oven door or microwave generating assembly are known defective. They must be replaced.

### WARNING - HIGH VOLTAGE

IT IS POSSIBLE TO COME IN CONTACT WITH LETHAL HIGH VOLTAGE WHEN WORKING WITH HV TRANSFORMER, HV CAPACITOR AND MAGNETRON. THEREFORE NEVER TRY TO MEASURE THE HIGH VOLTAGE. ALWAYS TAKE UTMOST CARE WHEN PERFORMING ELECTRIC MEASUREMENTS INSIDE THE OVEN.

## Technical data

### Product dimensions

Height	293	mm
Width	525	mm
Depth	434	mm

### Cavity dimensions

Height	180	mm
Width	325	mm
Depth	312	mm
Cavity volume	22	l
Turntable diameter	280	mm

### Weight

Net	21	kg
Gross	23	kg

### Electrical

Voltage	230-240	V
Frequency	50	Hz

### Error codes

Certain fault conditions are indicated by an error code.  
The following codes are implemented:

<b>ERR 0</b>	Convection temperature sensor fault. Not connected or short circuit.
<b>ERR 1</b>	Short circuit in the MW relay.
<b>ERR 6</b>	Weight sensor calibration has not been performed.
<b>ERR 7</b>	Humidity sensor is defect or has not been connected.
<b>ERR 8</b>	Impossible to write to E <sup>2</sup> PROM.
<b>ERR 9</b>	Options have not been set.
<b>ERR A</b>	No wheel detected on weight sensor.
<b>ERR B</b>	No pulses from the weight sensor or <4267 Hz.
<b>ERR C</b>	Fuzzy temperature sensor fault. Not 19-41 °C.

### Power

Output power MW	900	W
Power consumption	1400	W
Microwave frequency	2450	MHz

### Timer

90 min

### Features

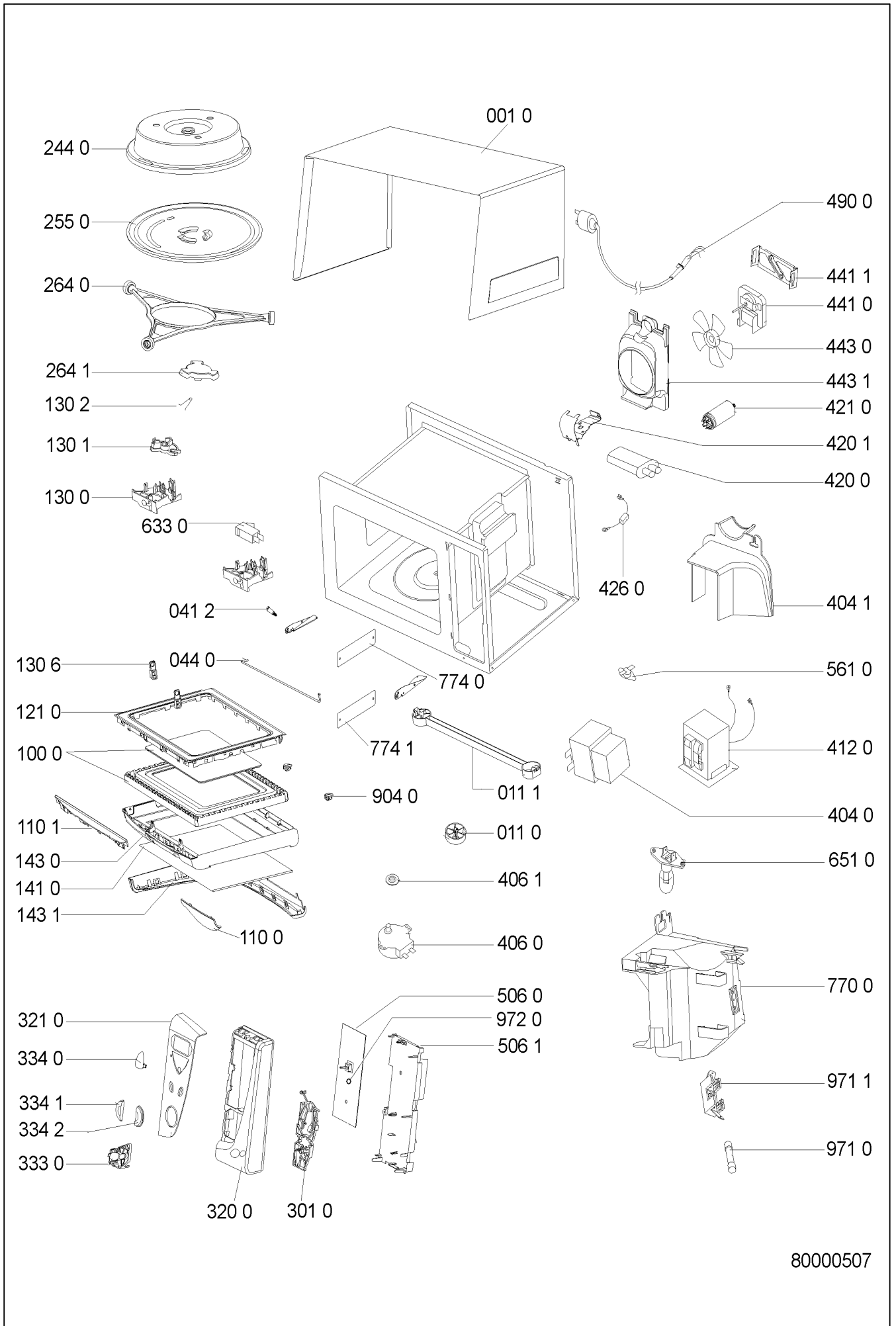
- Electronic control
- 7 power levels
- Jet start
- Jet power
- Jet defrost
- Keep warm function
- Child lock
- Timed defrost 160 W
- 24 hour clock

## Spare part list

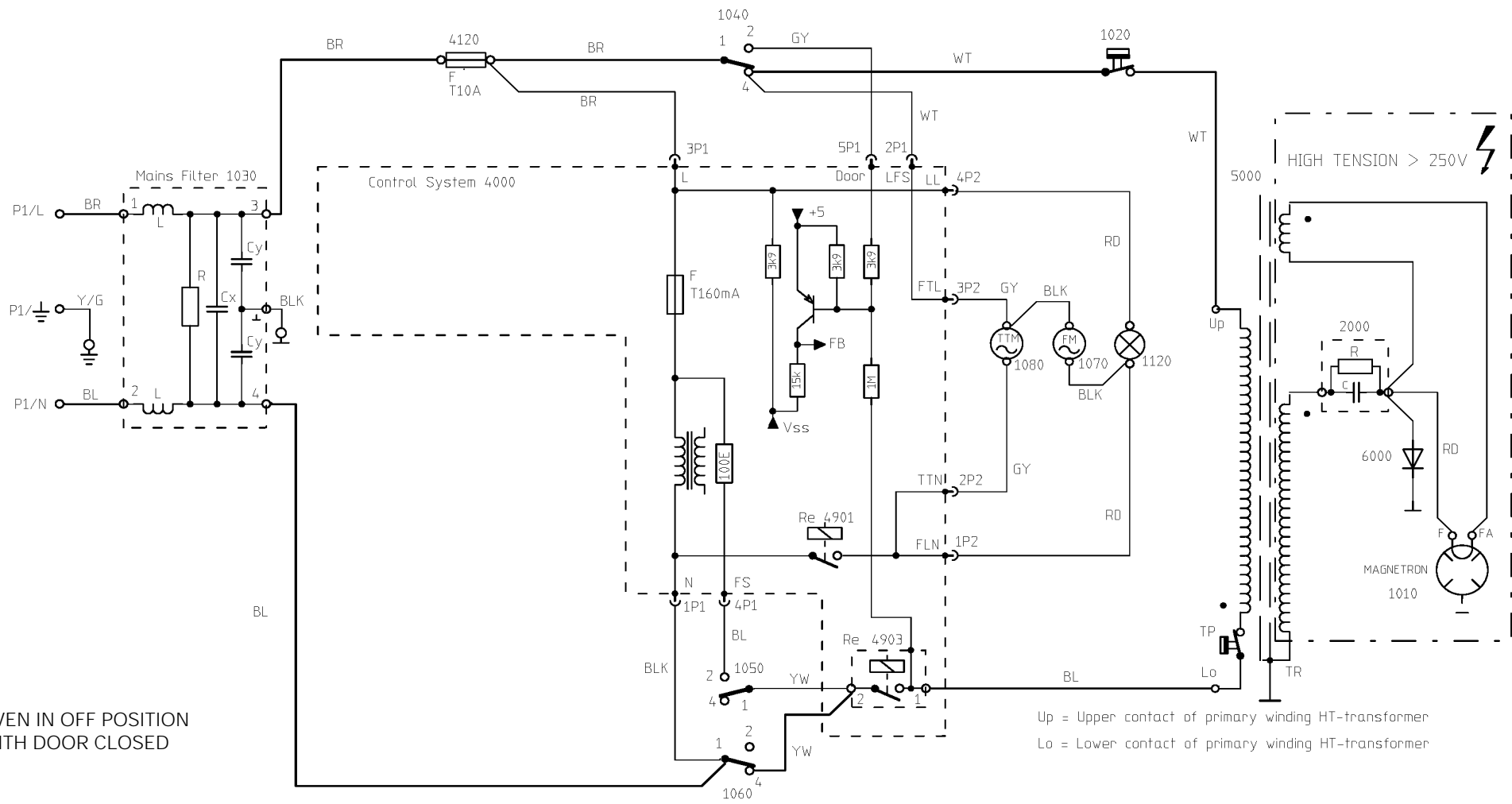
**Model** AT 310/WH  
**Service No.** 858731010291  
**Version** 858731010291

Pos. No.	12NC Code	Description
001 0	<b>4812 440 19692</b>	Cabinet WH
011 0	<b>4812 462 79852</b>	Foot
011 1	<b>4812 462 18192</b>	Foot bar rear
041 2	<b>4812 417 78131</b>	Pin for hinge
044 0	<b>4812 401 18466</b>	Clip, fix
100 0	<b>4812 442 69414</b>	Door cpl.
110 0	<b>4812 498 78263</b>	Handle
110 1	<b>4812 498 78262</b>	Handle cover
121 0	<b>4812 459 48159</b>	Door frame inner
130 0	<b>4812 270 18003</b>	Switch holder
130 1	<b>4812 460 38087</b>	Shim
130 2	<b>4812 491 48029</b>	Spring
130 6	<b>4812 535 38104</b>	Door lock
141 0	<b>4812 450 58718</b>	Door glass outer
143 0	<b>4812 459 38066</b>	Door frame outer
143 1	<b>4812 459 48162</b>	Door frame
244 0	<b>4812 466 88777</b>	Cover for food
255 0	<b>4819 466 78405</b>	Turntable
264 0	<b>4812 535 78069</b>	Turntable ring assy.
264 1	<b>4812 462 38161</b>	Turntable drive
301 0	<b>4812 404 68039</b>	Support button
320 0	<b>4812 453 59946</b>	Panel, control
321 0	<b>4812 453 59945</b>	Control panel cover
333 0	<b>4812 410 78148</b>	Button start/stop
334 0	<b>4812 412 59051</b>	Button rotacode
334 1	<b>4812 412 59052</b>	Button defrost
334 2	<b>4812 412 59053</b>	Button reheat
404 0	<b>4812 131 58804</b>	Magnetron
404 1	<b>4812 445 28002</b>	Air guide magnetron
406 0	<b>4812 361 58405</b>	Motor Turntable
406 1	<b>4819 532 68686</b>	Gasket ring for TT
412 0	<b>4812 145 38043</b>	Transformer HT
420 0	<b>4812 121 58145</b>	Capacitor HV
420 1	<b>4812 491 48001</b>	Clip, fix
421 0	<b>4812 122 08001</b>	Filter, mains
426 0	<b>4812 218 38225</b>	Diode HT
441 0	<b>4812 361 78024</b>	Motor fan
441 1	<b>4812 361 78025</b>	Bracket fan motor
443 0	<b>4812 310 38875</b>	Fan wheel
443 1	<b>4812 462 79743</b>	Cover FC outer
490 0	<b>4812 321 18241</b>	Cable, mains
506 0	<b>4812 209 88031</b>	Control board
506 1	<b>4812 209 88023</b>	Control board holder
561 0	<b>4812 282 08006</b>	Thermostat
633 0	<b>4812 271 38395</b>	Switch, door
651 0	<b>4819 134 28051</b>	Lamp
770 0	<b>4812 445 28003</b>	Air guide
774 0	<b>4812 462 28095</b>	Cover micaplate upper
774 1	<b>4812 462 28096</b>	Cover micaplate lower
904 0	<b>4812 532 58021</b>	Stopper
971 0	<b>4819 252 28125</b>	Fuse T10A
971 1	<b>4819 256 38016</b>	Bracket for fuse
972 0	<b>4819 252 28132</b>	Fuse T160mA

**Exploded view**



**Wiring diagram**



OVEN IN OFF POSITION  
 WITH DOOR CLOSED

Up = Upper contact of primary winding HT-transformer  
 Lo = Lower contact of primary winding HT-transformer

- |     |              |      |                      |      |                 |
|-----|--------------|------|----------------------|------|-----------------|
| BL  | Blue         | 1010 | Magnetron            | 1080 | Motor turntable |
| BLK | Black        | 1020 | Thermostat magnetron | 1120 | Cavity lamp     |
| BR  | Brown        | 1030 | Mainsfilter          | 2000 | HT capacitor    |
| GY  | Grey         | 1040 | Doorswitch secondary | 4000 | Control system  |
| RD  | Red          | 1050 | Doorswitch monitor   | 4120 | Fuse T10A       |
| WT  | White        | 1060 | Doorswitch primary   | 5000 | HT transformer  |
| YW  | Yellow       | 1070 | Motor fan            | 6000 | HT diode        |
| Y/G | Yellow-Green |      |                      |      |                 |

8538 221 01291