

Repair instruction

Description: Displayboard LCD

Part number: 626972

Look for Service Centres, Point of Sale addresses and other information on: www.thetford.eu

Version:

Date:

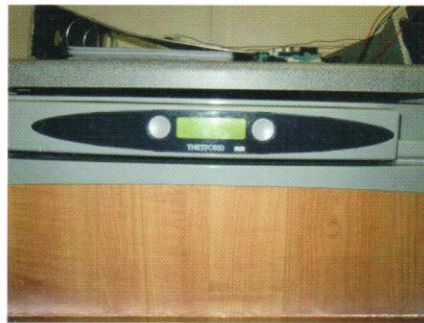
November 2010

Tools required:

Cross Head Screwdriver,

A

When exchanging the Display Board there is no need to remove the fridge however we do advise to isolate the fridge from the mains and 12v supply



B

Remove the oval perspex display by using a small flat screwdriver. Push the screwdriver behind the on/off button and pull forward



C

Once the first couple of clips have been released the overlay simply pops out



D

Now the overlay has been removed you will see two holes in the grey control board housing.



E

Fully remove the two screws, one found at the bottom of each hole



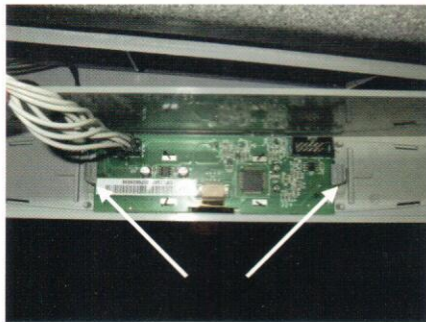
F

The grey control board housing can now be removed taking care not to pull to far from the fridge as the cable is still attached



G

Looking inside the control board housing from the back you will notice the LCD display is held in by two clips



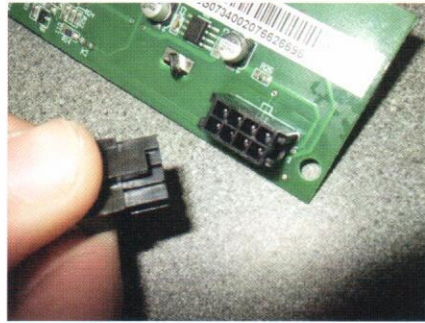
H

Simply hold the clips back and remove the display



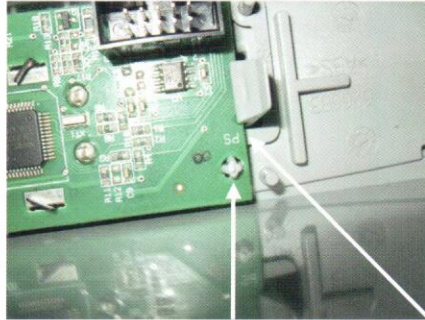
I

Unclip the white wiring loom from the display board by holding the black plug, this way the wiring loom shouldn't get damaged



J

Replace the display board into the control board housing ensuring the holes sit over the lugs and the clips are firmly back in place



K

Replace the control board housing taking care as not to trap any of the wires before screwing it back in place



L

Re-attach the overlay by clipping back in place. The fridge can now be reconnected to the electricity supply and tested

