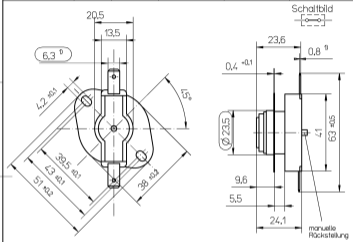


The reproduction, transmission or use of this document or its contents is not permitted without express written
 consent of the copyright holder. All rights reserved. This document is a technical drawing and is not to be
 used for manufacturing or design purposes without the express written consent of the copyright holder.

0	10	20	30	40	50 mm
---	----	----	----	----	-------

Intended changes opposing release specimen or specification other must be advised
 in time and may only be introduced following written clearance. Deviating designs
 will be refused.

Material-Nr.	Grundtyp	Schaltstufe	Öffnen	Schaltpunkte	Schließen	Farbl. Kennzeichnung
3022697AA8	262R	—	130°C+5K/-10K	Manuell		
3020167AA4 (B)	262R	—	170°C+5K/-10K	Manuell		weiß
5550005283 (B)	262R	—	150°C+5K/-5K	Manuell		grün



Kriechstromfestigkeit: VDE 700 / KC 250
 Belastung: 16 (4, 16 / 250 V AC
 nach Wahl des Herstellers
 Auslösung: 3/4"
 Flachstecker: 9
 Isolierart: 1
 Bemerkung: 1

Bimetallscheibe und Schaltkontakte
 müssen korrosionsfest gegen Luft-
 feuchte 95% rel./feuchte sein.
 Alternativ: Kompletterguss aller Spalten
 Technischer Bedingung: IZO 012 TLO, Lastenheft
 BSH-G-Norm: Ausschuss von Stoffen - Teil 1+2
 Kunststoffe müssen VDE 0700 Teil 1 A5 Par-30
 für 3-Phasen harte Betriebsbedingungen
 entsprechen

F Packing Directive LV95, LV25A Checking Directive		Technical Directive 302 2637 TL8 Partname 5500.3022697XXX		Allowed Tolerances ± 0,2	Surface	Formed A4 CAD
Housing Details		Weight		Material housing phenol resin longer stainless steel bimetal TRU 81		Scale 1:1 Class
First Application		Control dimensions must be indicated separately		Designation T-BEGRENZER HEIZUNG T9 / T10 T-DELMETER		
Rev. Change No. DR. VBR. OK.		Date DR. 08.03.99 Ziegler DK. 22.04.99 Kollstein APP.		Number 5500 - 3022697XXX		Sheet No. 1 of 1
BSH GROUP		NAIEN HAUSGERÄTE GMBH		Supers. No.		TIT Index 1